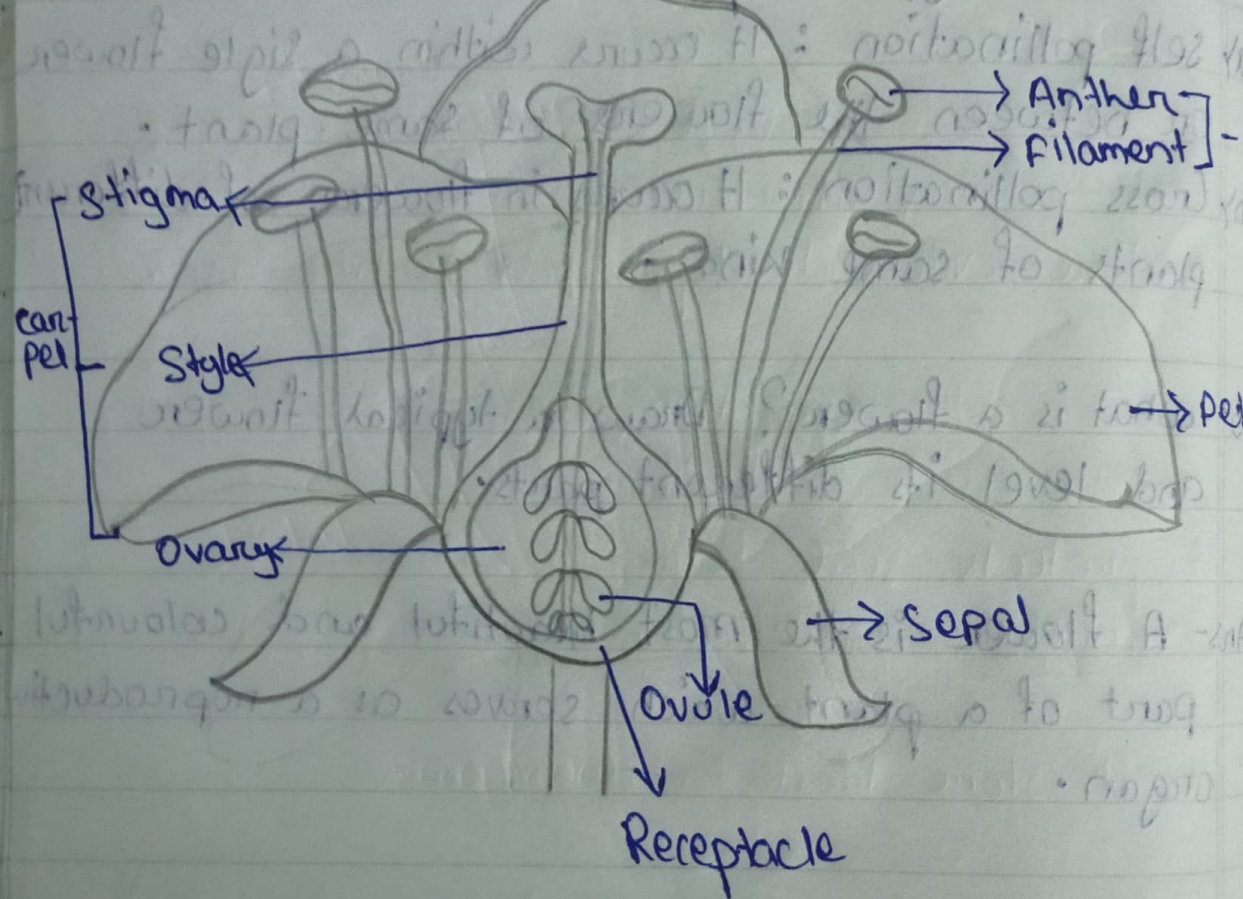


3. what is a flower? Draw a typical flower and label its different parts.

Ans- A flower is the most beautiful and colourful part of a plant which serves as a reproductive organ.

Long Question Answer

What is the structure of a flower? How is it adapted for the function of pollination? Name the two types of pollination. How is the transfer of pollen grains from the anther to the stigma of a flower? The two types of pollination are:



8. State the location of the following in a flower.

a) Sepals : Sepals are the green outermost part of the flower.

b) Petals : This forms the second inner whorl. Petals are the large, fragrant and brightly coloured part of the flower.

c) Anthers : It is located in the third whorl of the flower. The filament of the stamen bears the anther at its tip.

d) Stigma : It is located in the fourth and the innermost whorl of the flower. The style bears the stigma at its tip.

9. Given below is the diagram of a typical flower. Label the parts mark by guidelines.

