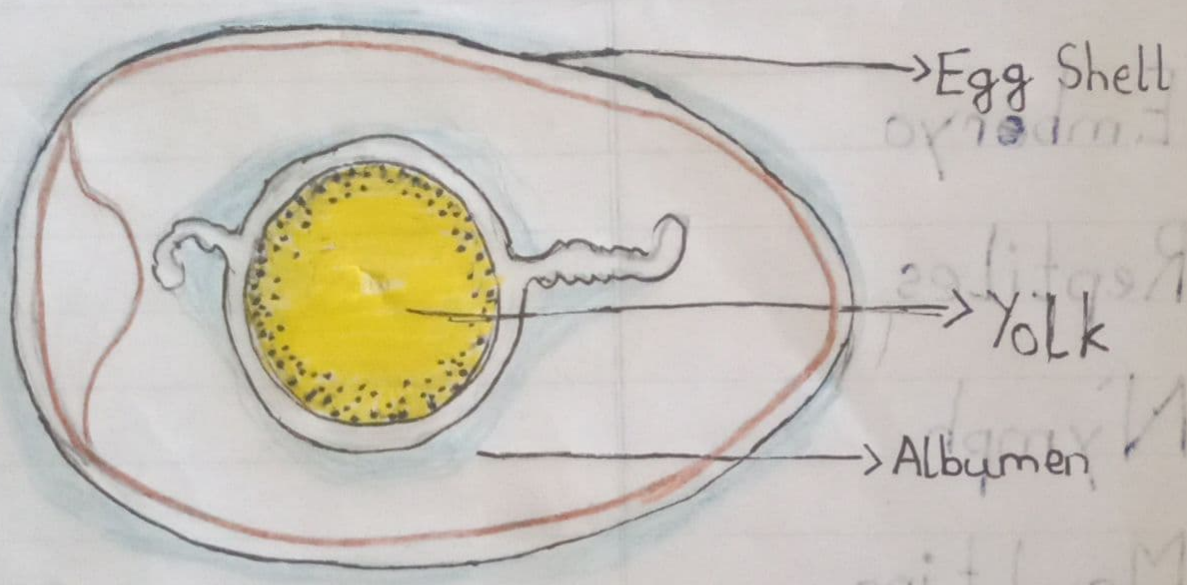


# Internal structure of an egg



A. Tick the correct answer

1. The process of producing young ones is called \_\_\_\_\_

a. Reproduction ✓

b. Digestion

c. Photosynthesis

2. The yellow portion inside an egg is the

a. Yolk ✓

b. Albumen

c. Lemon

3. The young one of a frog is called

a. Tadpole ✓

b. Larva

c. Maggot

4. Shedding of old skin by animals is called

a. Moulting ✓

b. Changing

c. Reproduction

5. Which of the following is the larva of a housefly

a) Maggot ✓

b) Nymph

c) Pupa

B. Unscramble the letters to get the names of four egg layering animals

zildra - Lizard

nskea -  Snakes

ifhs - Fish

urtlet - Turtle