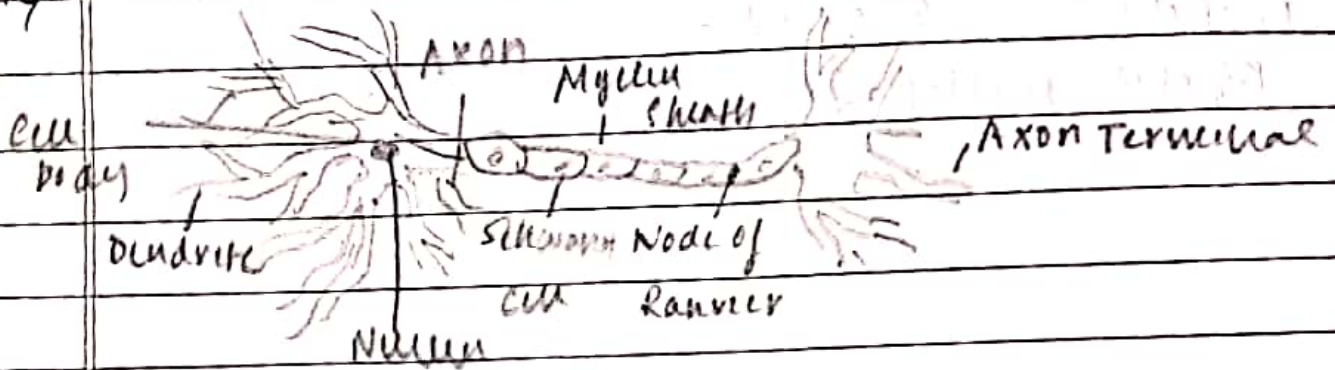


Home Work

10) Draw a well labelled diagram of neuron.



Trace the pathway of impulse conduction in your body.

The impulse from neurones are conducted in the form of electrical and chemical message. The conduction of nerve impulse occurs in dendrites to cell body. The axon hillock and takes it towards dendrites to soma. The axon hillock is impulse reach nerve synapse. Then it is transmitted to next nerve.

What do you mean by reflex action? Where is it originated?

Reflex action is an involuntary action that is a sudden response to stimuli.

It helps us in protecting

It takes care for survival of organism.

classify neurons on basis of neurites

Mainly of 3 types

Axonal → only cyton

unipolar cyton + axon

Bipolar multipole