

## Long answer questions

1. What is meant by pollination? Name two types of pollination.

Ans - Pollination is the transfer of pollen grains from the anthers to the stigma of a flower.

The two types of pollination are

(a) self pollination - It occurs within a single flower or between the flowers of same plant.

(b) cross pollination: It occurs within a ~~single~~ <sup>different</sup> flower or between the flowers of same kind.

3. What is a flower? Draw a typical flower and label its different parts.

Ans - A flower is the most beautiful and coloured part of a plant which serves as a reproductive organ.

8. State the locations of the following in a flower.

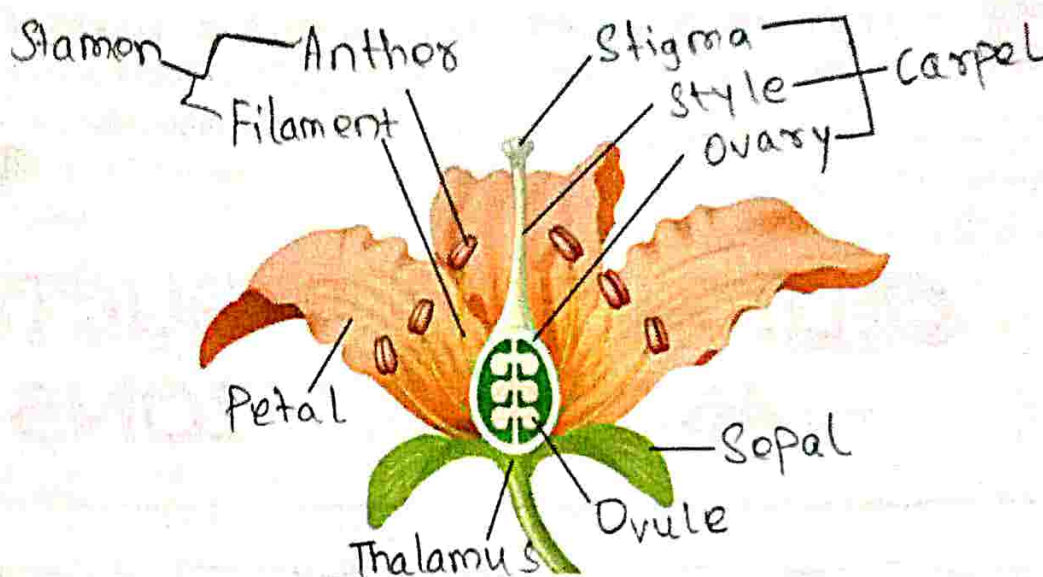
(a) sepals: Sepals are the green outermost part of a flower.

(b) petals: This forms the second inner whorl. Petals are the large, fragrant and brightly coloured parts of the flower.

(c) Anthers: It is located in the third whorl of the flower. The filament of the stamen bears the anther at its tip.

(d) Stigma: It is located in the fourth and the innermost whorl of the flower. The style bears the stigma at its tip.

9. Given below is the diagram of a typical flower. Label the parts marked by guidelines.



10. Give the difference in the function between the following parts :

- |                        |                             |
|------------------------|-----------------------------|
| (a) Ovary and ovule    | (b) Petal and sepal         |
| (c) Filament and style | (d) Pollen grains and ovule |

### PROJECT

- Some seeds called photoblastic seeds need presence of light also for their germination along with water, air and suitable temperature. Try to find out these plants.
- Why are some seeds dry, light with wings while others have structures like hooks ? Find out the reason and examples to support your answer.