

9a) Oxygen, suitable temperature and water.

10a) Roots - Radicle

b) Leaves - Plumule

## II) Long Answer Questions.

1) Pollination is the transfer of pollen grains from Anther to the stigma of a flower. The two types of pollination are - Self pollination and Cross pollination

2) Two problems that will be faced by the new plants are -

- They will not get proper space and heat to germinate properly.

- When they will grow they will not get space to spread their leaves in which the plant will be destroyed.

3) A flower is the most beautiful and coloured part of the plant.

[Typical flower drawn in next page.]

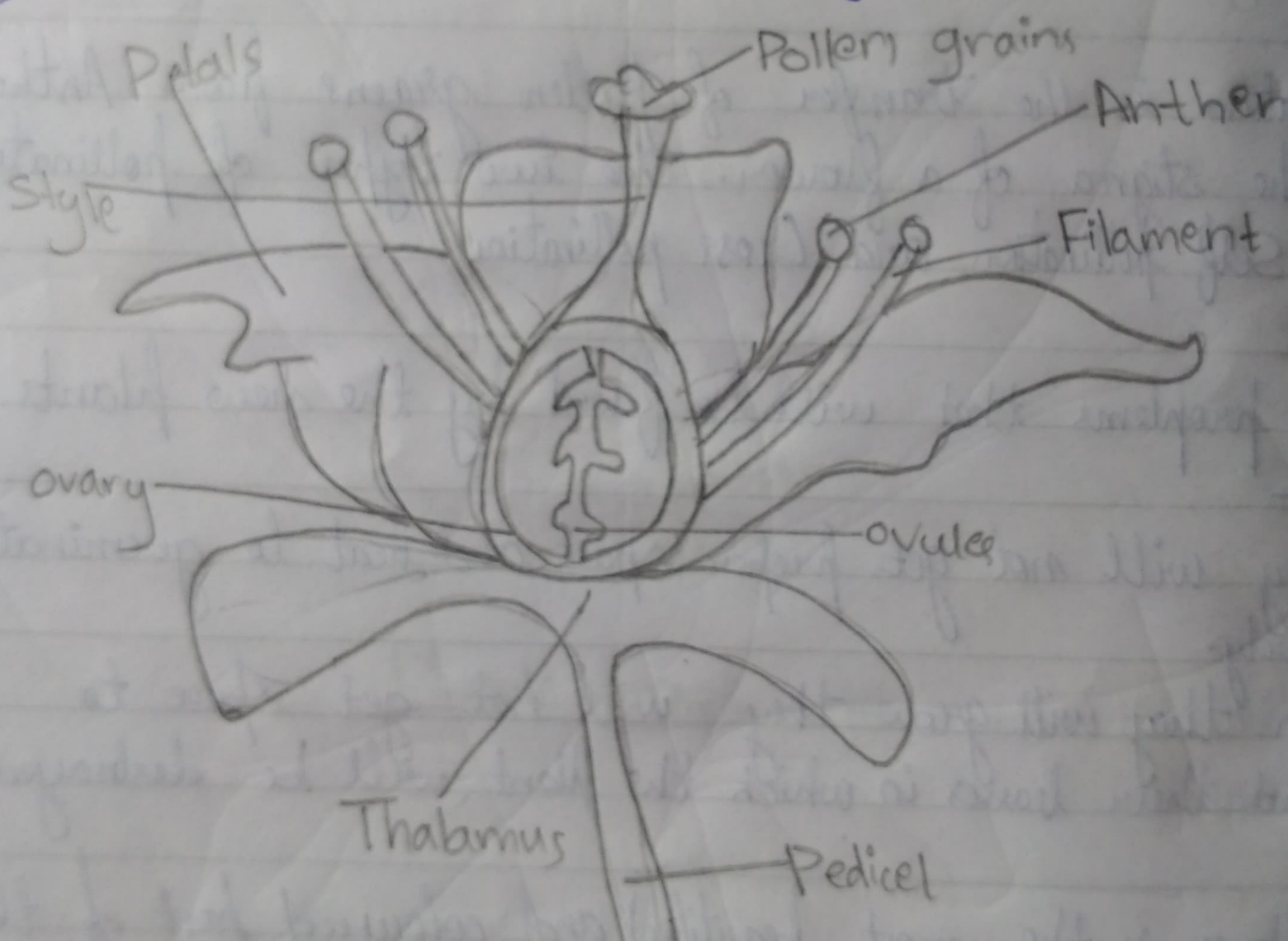
Parts of typical flower:

Anther, filament, petals, ovules, ovary, pedicel, pollen grains, style.

Seeds

3ans

Labelled Diagram of Typical Flower



8) a) Sepals - Calyx

b) Petals - Corolla

c) Anther - Stamen

d) Stigma - Gynoecium

9 ans

