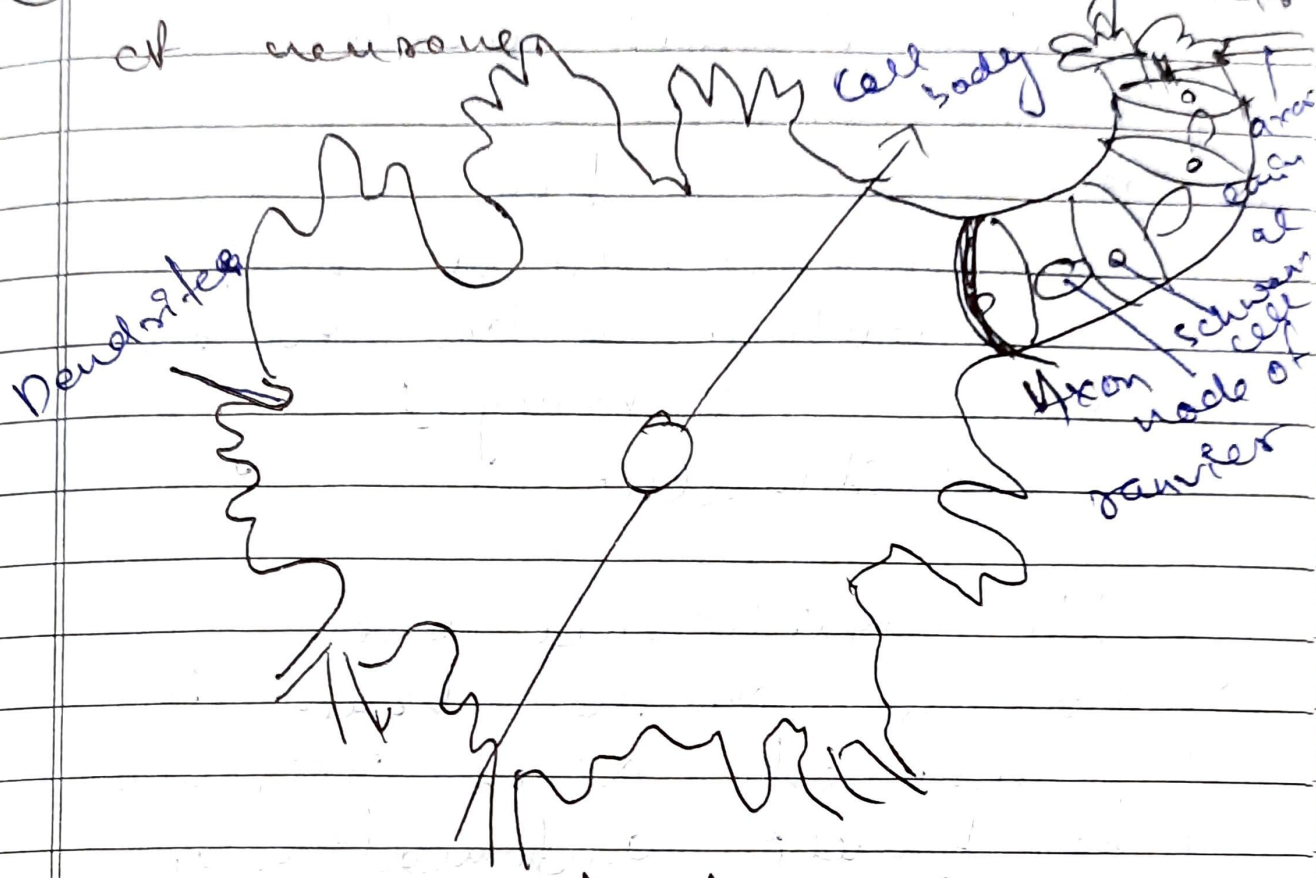


# Home Assignment

① Draw a well-labelled diagram of neuron



Structure of neuron

② Trace the pathway of impulse conduction in your body

Ans.

Stimulus

↓  
Dendron

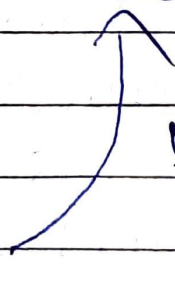
↓  
Axon

↓  
nerve ending

Brain (Cerebrum) / spinal cord (Cerebrum)

muscles

back to



3) what do you mean by reflex action? what is its

significance?

ans. Reflex action is an automatic, quick and involuntary action in the body brought by a stimulus.

→ Its significance are -  
Burden on the brain is reduced as it responds to stimuli automatically.

→ It protects us from any sudden stimulus which may be harmful.

4) Classify neurons on the basis of neurites.

ans. Neurons are classified according to the direction in which the signal travels.  
~~They~~ Neurons can be classified as -

- I
- II
- III

Sensory neurons  
motor neurons  
effector neurons