

Home Assignment

12/08/2021

① Define the terms unisexual and bisexual giving one example of each.

Ans. Unisexual :- In most of the animals including humans, male and female reproductive organs are in different individuals. Such animals are called unisexual.

Bisexual :- In some animals like tapeworm, liver fluke, earthworm, leech etc, the male and female reproductive organs are found in a single individual. Such organisms are called bisexual.

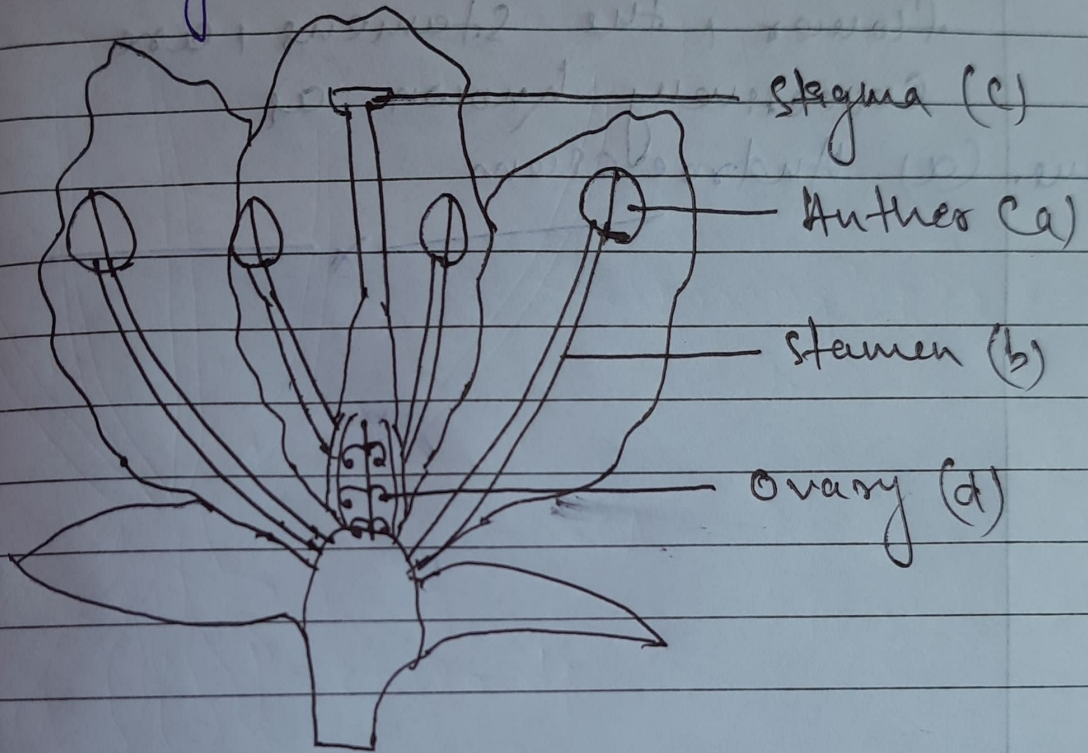
② Draw a longitudinal section of a flower and label the following parts:

(a) part that produces pollen grains.
Stamen / Anther.

(b) part that transfers male gametes to female gametes.
Pollen tube

(c) part that is sticky to trap the pollen grain. Stigma

(d) part that develops into a fruit. Ovary.



3 (i) The flower of the Hibiscus plant is unisexual

(ii) The part of the flower which is present in the centre of the flower is stamen

(iii) Reproduction is essential for

ans. (d) Living organisms in order to continue the species generation after generation

(iv) The male reproductive parts of a flower, the stamens, are collectively known as

ans. (a) Androecium

(c) pistil

(b) ovary

