

Home Assignment Dt. 14 Aug 2021

① If male gamete fuses with a female gamete in generative fertilisation.

② check if the following statement is incorrect?
ans. ~~all of them~~ Androecium is a part of the carpel.

③ In a list of organisms given below which is reproduced by asexual method?
ans. Banana
yeast

④ ~~offspring~~ Offspring formed by asexual method of reproduction have greater similarity among themselves because:-
ans. Asexual reproduction involves only one parent.
Asexual reproduction does not involve gametes.

The correct sequence of

reproductive stages seen in
flowering plant is

gamete \rightarrow zygote \rightarrow embryo

\downarrow
Seedling

② The number of chromosomes present in parents and offspring of a particular species remains constant due to halving of chromosomes during gamete formation.

⑦ In Rhizopus tubular structure bearing sporangia at their tips are called Hyphae.

⑧ Length of the pollen grain depends upon the distance between pollen grains on upper surface of stigma and ovule.

⑨ The ability of cell to divide into several cells during reproduction in prokaryotes is called Multiple fission

10) Asexual reproduction takes place through budding in yeast

11) The Anther contains pollen grains

12) The triploid nucleus formed is called Seed

13) Syngamy is fusion of egg cell and male gamete in flowering plants.

14) Check if the following statement are true for flowers?
They ~~are~~ ^{are} sexual reproductive organ. After fertilisation they give rise to fruit.

15) Check among the following are false for unisexual flowers? they show cross pollination.
Short answer type

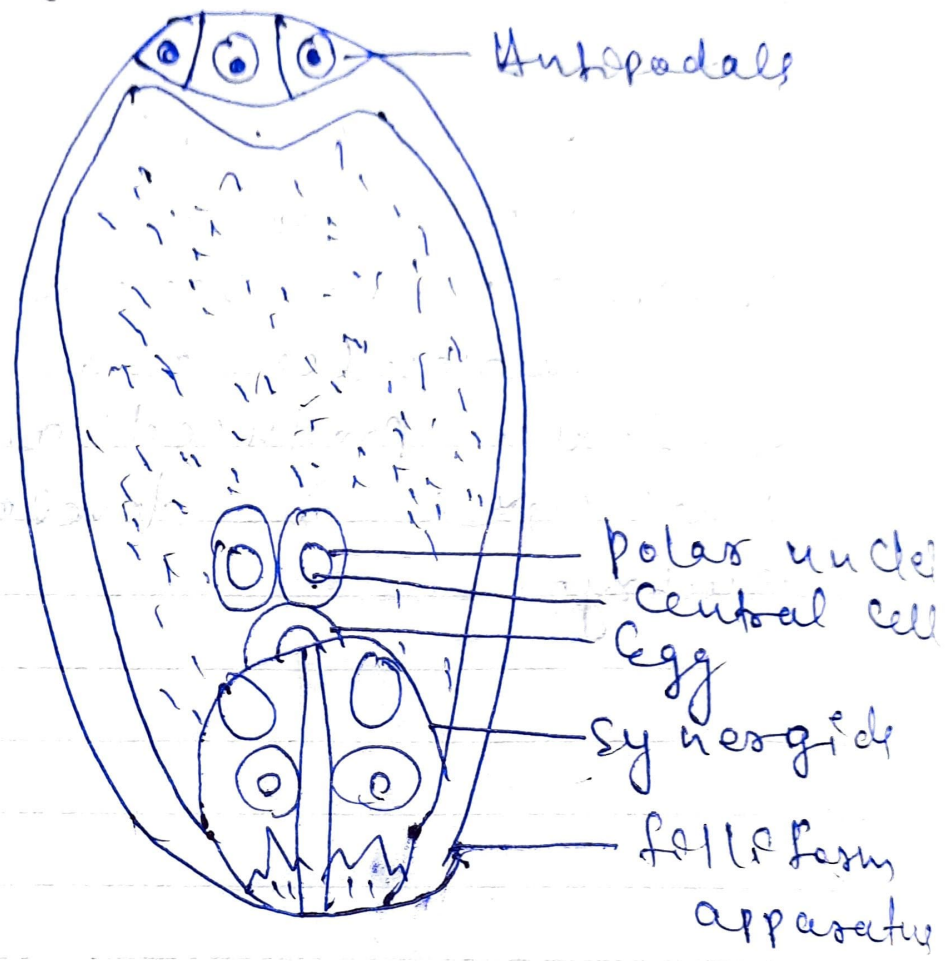
Q) Why does the period of development of embryos & larvae in case of multicellular organisms?

Ans) Because multicellular organisms are more complex in their structure, this requires many ATP molecules which are gradually produced and utilised in development of embryos.

12/10/2020

(17)

Draw the diagram of an embryo sac of plants.



Asadajena
14/Aug/2021