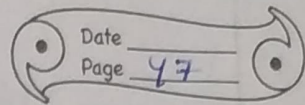


## REVIEW QUESTIONS



### MULTIPLE CHOICE QUESTIONS

1) a) In a germinating seed, the roots develop from:

Ans) a) i) Radicle

b) In a germinating seed, the shoot develops from:

Ans) ii) Plumule

c) Which one of the following is a monocotyledonous seed?

Ans) iii) Maize

d) If the cotyledons are pushed above the soil, then such type of germination is called:

Ans) i) Epigeal

e) If the cotyledons remain under the soil, then such type of germination is called:

Ans) ii) Hypogeal

f) Pollen is produced in the:

Ans) iv) Anther

g) Reproductive whorls of a flower are:

Ans) i) Stamens and Carpels

h) Which one of the following is a false fruit?

Ans) ii) Apple

i) In a seed food is generally stored in:

Ans) iv) Cotyledons or ~~Endosperms~~ Endosperms

1. Given below is a longitudinal section of a bean seed. Label the parts marked 1 to 5 and write their functions.

Ans 1. Testa: It is the outer exposed part of the seed.

2. Plumule: It is located between the two cotyledons and develops into a shoot.

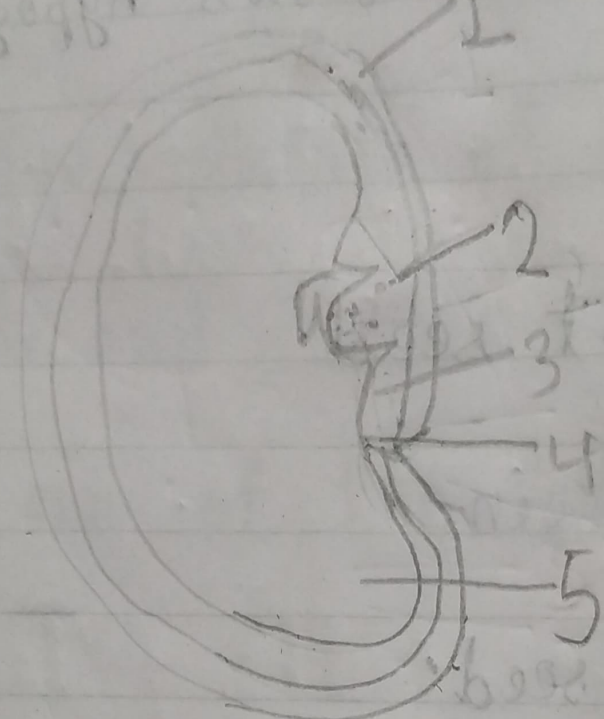
3. Radicle: It is located between the two cotyledons and develops into a root.

4. Micropyle: It absorbs and allows the entry of as much as water required for germination.

5. Cotyledon: It stores the food material which is used by the seedling for growth.

SHORT ANSWER QUESTIONS  
Name the following.

(a) A seed which shows hypogeous cotyledons



(b) A monocot seed

(c) A dicot seed

(d) A seed which shows epigeal cotyledons

(e) A seed which shows

## SHORT ANSWER QUESTIONS

Date \_\_\_\_\_

Page 49

2. Name the following.

a) A seed which shows hypogeal germination.

Ans → Pea

b) A monocot seed.

Ans → Maize grain

c) A dicot seed.

Ans → Bean seed

d) A seed which shows epigeal germination.

Ans → Bean seed