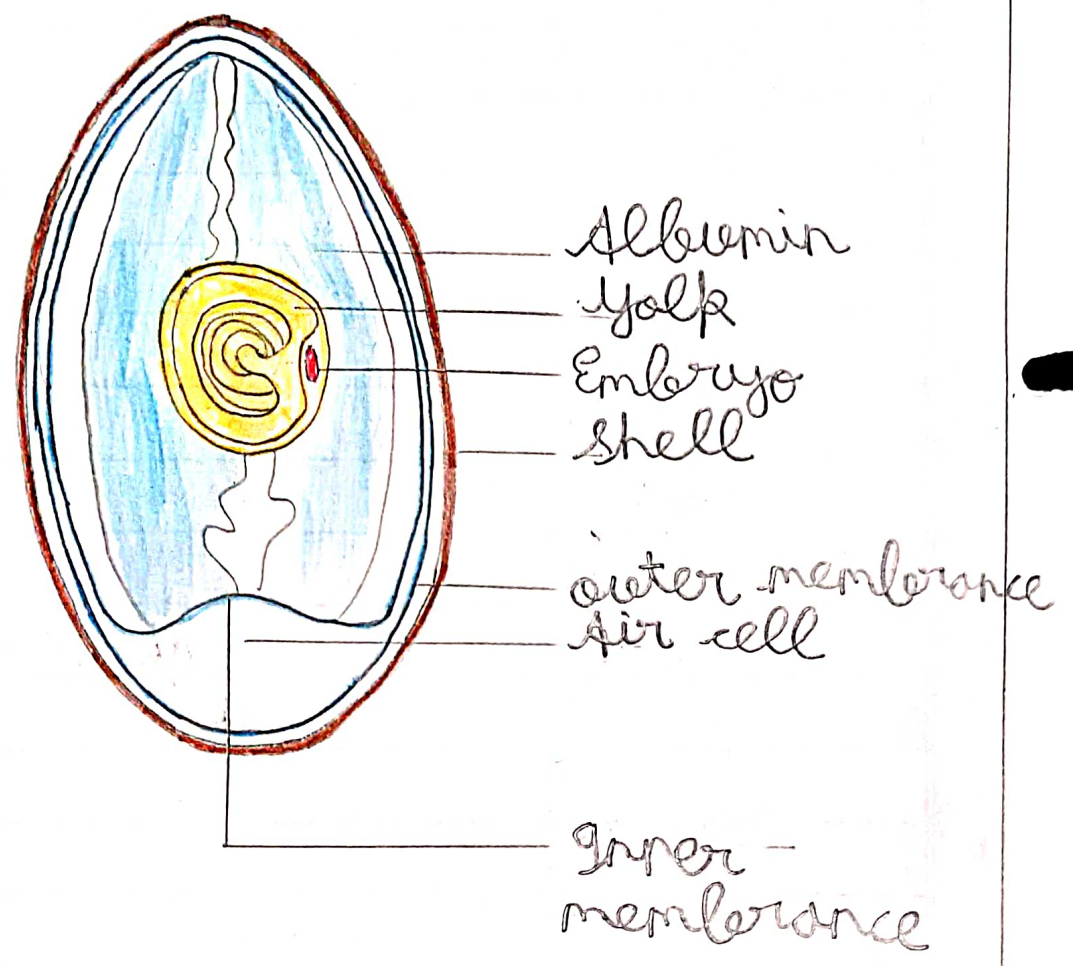


HW
25/8/21

Structure of a egg



A Tick the correct answer

1 The process of producing young ones is called

a Reproduction b digestion

c Photosynthesis

2 The yellow portion inside an egg is the

a yolk b albumen c lemon

3 The young one of frog is called

a tadpole b larva

c maggot

4 Shedding of old skin by

animal is called

a molting (b) changing

c reproduction

5 Which of the following is
larva of a housefly.

a maggot (b) nymph (c) pupa

B Unscramble the letters.

Z i l d r a = Lizard

N s k a e = Snake

g f s h = Fish

U r t l e t = Turtle