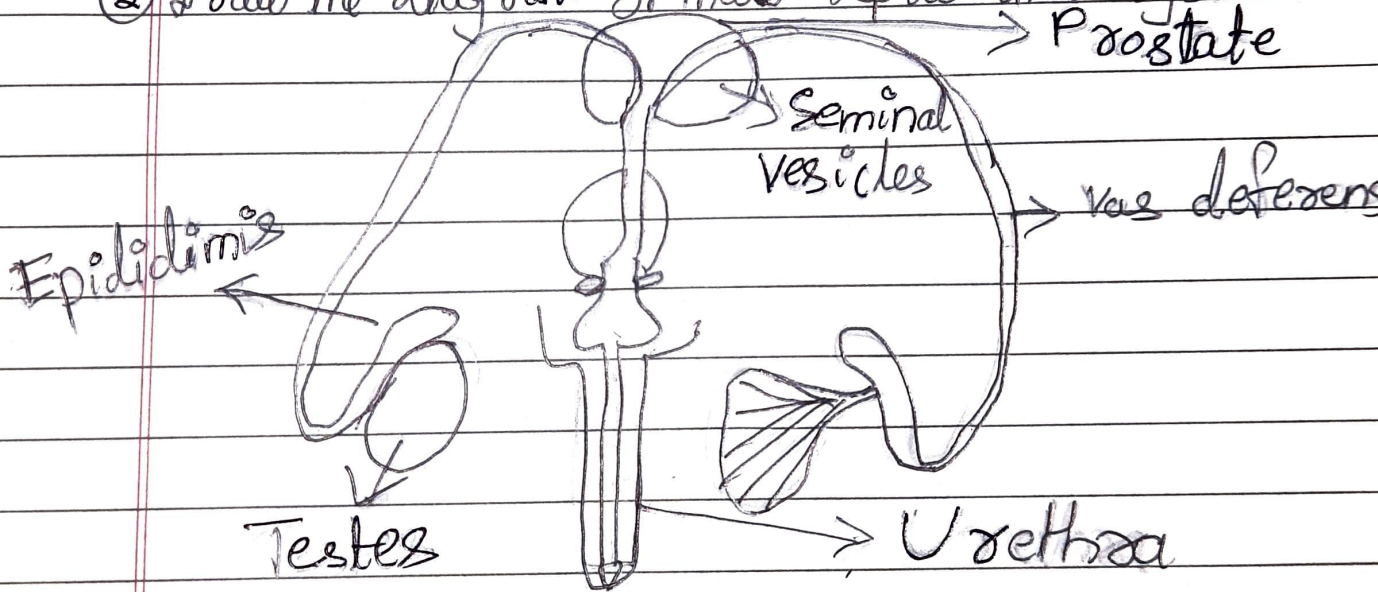


① Define Gametes

ans → Gametes are the mature haploid male or female sex cell which is able to unite with another opposite sex cell in sexual reproduction to form a Zygote.

② Draw the diagram of male reproductive system.



③ Differentiate between primary and secondary sexual parts.

ans → Primary parts are present inborn and secondary parts develop in respect to age and growth.

penis in men and vagina in women are primary and height change is secondary.