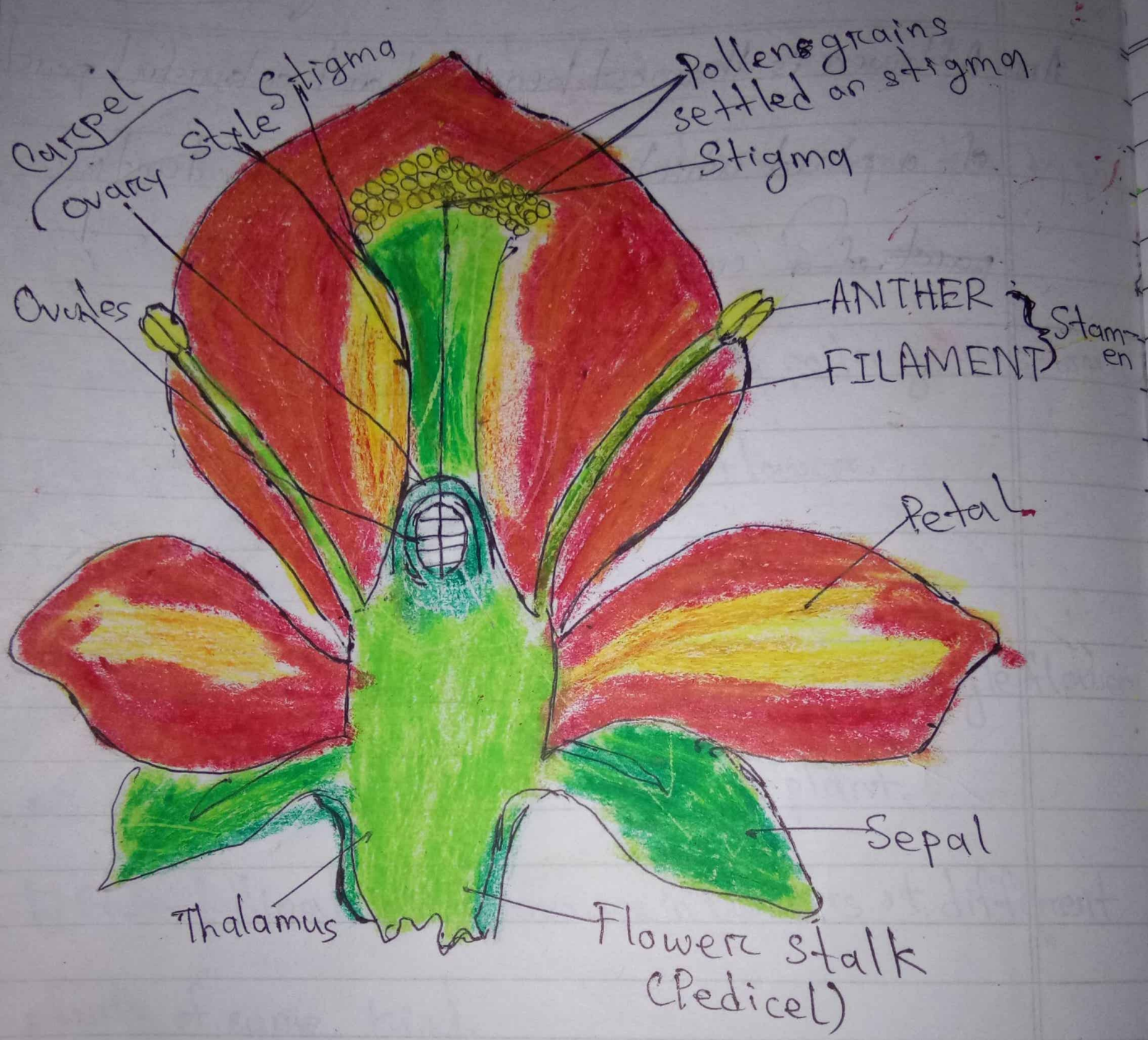


Q3. What is a flower? Draw a typical flower and label its different parts.

Ans- A flower is the most beautiful and colourful part of a plant which serves as a reproductive ~~part of a~~ organ.



8. State the location of the following in a

Ans a) Sepals: Sepals are the green, outermost part of a flower.

b) petals: This forms the second inner whorl of the flower. Petals are the large, fragrant and brightly coloured parts of the flower.

c) Anthers: It is located in the third whorl of the flower. The filament of the stamen bears ^{stamen} stigma at its tip.

d) Stigma: It is located in the fourth and the innermost whorl of the flower. The style bears the stigma at its tip.

