

HOME ASSIGNMENTS

1. Define the terms Unisexual & Bisexual giving one example of each.

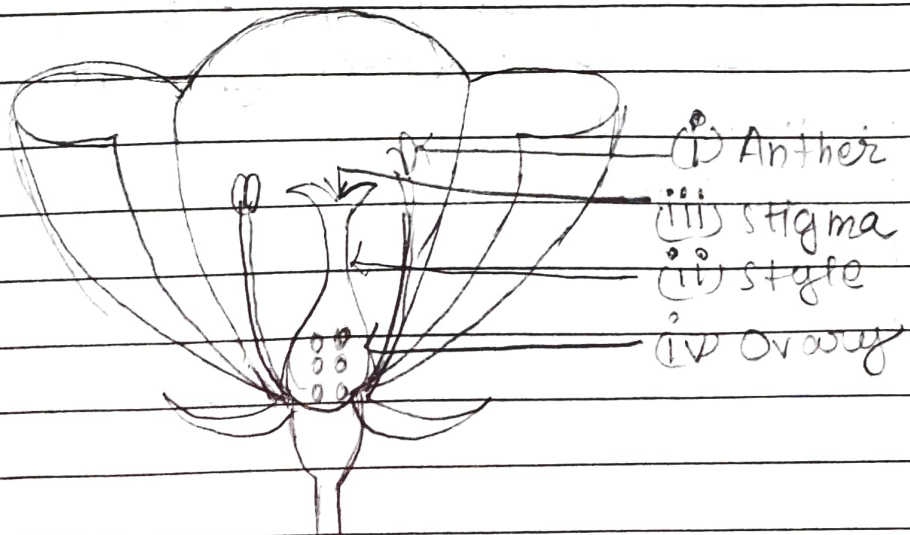
Ans. Unisexual flowers: The flowers which contain only the male or female reproductive organs are called unisexual flowers. ~~For example~~ To reproduce they undergo cross pollination.

Ex - Watermelon.

• Bisexual flowers: The flowers which contain both male and female reproductive organs are called bisexual flowers. They will self pollinate themselves.

Ex - Mustard.

2.



2. (i) Part that produces pollen grains? **Anther**
(ii) Part that transfers male gametes to the female gametes? **Style**
(iii) Part that is sticky to trap the pollen grains? **Stigma**
(iv) Part that develops into a fruit? **Ovary**

3. (i) The flower of the hibiscus plant is **Bisexual**
(ii) The part of the flower which is present in the centre of the flower is **Carpel**.
(iii) Reproduction is essential for living organisms in order to continue the species generation after generation.
(iv) The male reproductive parts of a flower, the **stamens**, are collectively known as
a) **Androecium**
b) **Gynoecium**
c) **Anther**
b) **Filament**