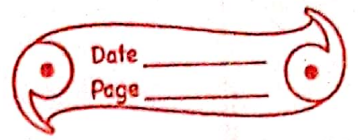


# Ch-5 - The Great Indian Desert



1. Great Indian desert
2. Thar desert
3. Satluj river basin
4. Rann of Kachch
5. Aravalli Range
6. Indus river basin
7. Climate
8. Vegetation
9. Landforms
10. Sand dunes
11. Sand storms
12. Oasis
13. Life in the desert region of Rajasthan

14. population

15. Nomads

16. Banjaras

17. Farming

18. Indira gandhi canal

19. The ship of the desert

20. Clothing

21. Ghaghra - choli

22. Odhin

23. Dhoti - kurta

24. turban

25. Langue and festivals

26. Hindi

27. Rajasthan

Example - Find the LCM of

12, 15 and 20

multiples of 12 = 12, 24, 36, 48,

60, 72, 84, 96, 108, 120

multiples of 15 = 15, 30, 45, 60,

~~multiples of 1~~ 75, 90, 105,

120, 135

Exercise - 10 (E)

Find the LCM of the given

number by listing method

a) 2, 6

multiples of 2 = 2, 4, 6, 8,

10, 12, 14, 16, 18, 20

multiples of 6 = 6, 12, 18, 24,

30, 36, 42, 48, 54, 60

write the common multiples

of both the numbers = 6,

12 and 18

6, 12 and 18 are the common

multiples of both the

numbers.

b. 4/12

multiples of 4 = 4, 8, 12, 16,

20, 24, 28, 32, 36, 40

multiples of 12 = 12, 24,

36, 48, 60, 72, 84, 96,

108, 120

Write the common multiples  
of both the numbers of  
both the numbers 12, 24  
and 36 are the common  
multiples.

Q. 5.3

Multiples of 5 = 5, 10, (5),

20, 25, (30), 35, 40, 45, 50

Multiples of 3 = 3, 6, 9, 12,

(15), 18, 21, 24, 27, (30)

Write the common multiples  
of both the numbers = 15, 30  
and 30 are the common  
multiples

Q1) 3, 9  
multiples of 3 = 3, 6, 9, 12,  
15, 18, 21, 24, 27, 30,  
multiples of 9 = 9, 18, 27,  
36, 45, 54, 63, 72, 81,  
90.

Write the common multiples  
of both the numbers -  
18, 9 and 27, are the  
common multiples.

Q2) 10, 20  
multiples of 10 = 10, 20, 30,  
40, 50, 60, 70, 80, 90, 100

Multiples of 20 = 20, 40, 60,  
80, 100, 120, 140, 160, 180,  
200

Write the common multiples  
of both the number - 20,  
40, 60, 80 and 100 are  
the common multiples.

Q. 4  
Multiples of 3 = 3, 6, 12, 18, 24,  
30, 36, 48, 56, 60

Multiples of 4 = 4, 8, 12, 16,  
20, 24, 28, 32, 36, 40

write the common multiples  
of both the number 12, 24  
and 36 are the common  
multiples

Q) 4, 18

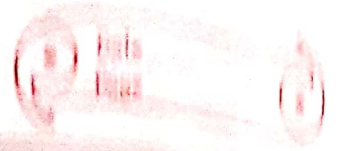
Multiples of 4 = 4, 8, 12, 16,  
20, 24, 28, 32, (36), 40

Multiples of 18 = 18, (36), 54,  
72, 90, 108, 126, 144, 162,  
180

write the common multiples  
of both the numbers 36  
is the common multiples  
of both the numbers.



404, 6



⑩ multiples of 4 = 4, 8, 12, 16,  
20, 24, 28, 32, 36, 40

multiples of 6 = 6, 12, 18,  
24, 30, 36, 42, 48, 54, 60

write the the common  
multiples of both the  
numbers, 12, 24 and 30  
are the common multiples

~~is multiples of 10~~

is 16, 8

multiples of 10 = ⑩, ⑲, ⑳

⑳, ⑳, 40, 112, 128, 144

160

Date \_\_\_\_\_  
Page \_\_\_\_\_

multiples of 8 = 8, 16, 24,

32, 40, 48, 50, 64, 72, 80

write the common multiples

of both the numbers 10,

32, 48, 64 and 80 are the

common multiples

Q) 9, 12

multiples of 9 - 9, 18, 27,

36, 45, 54, 63, 72, 81,

90

multiples of 12 - 12, 24, 36,

48, 60, 72, 84, 90, 108

120.

Write the common multiples  
of both the numbers - 36  
and 72 are common  
multiples.

method  
factorisation

as 16 and 48

$$\begin{array}{r|l} 2 & 16 \\ \hline 2 & 8 \\ \hline 2 & 4 \\ \hline & 2 \end{array}$$

$$\begin{array}{r|l} 2 & 48 \\ \hline 2 & 24 \\ \hline 2 & 12 \\ \hline 2 & 6 \\ \hline & 3 \end{array}$$

$$16 = 2 \times 2 \times 2 \times 2$$

$$48 = 2 \times 2 \times 2 \times 2 \times 3$$

$$\text{LCM} = 2 \times 2 \times 2 \times 2 \times 3 = 48$$