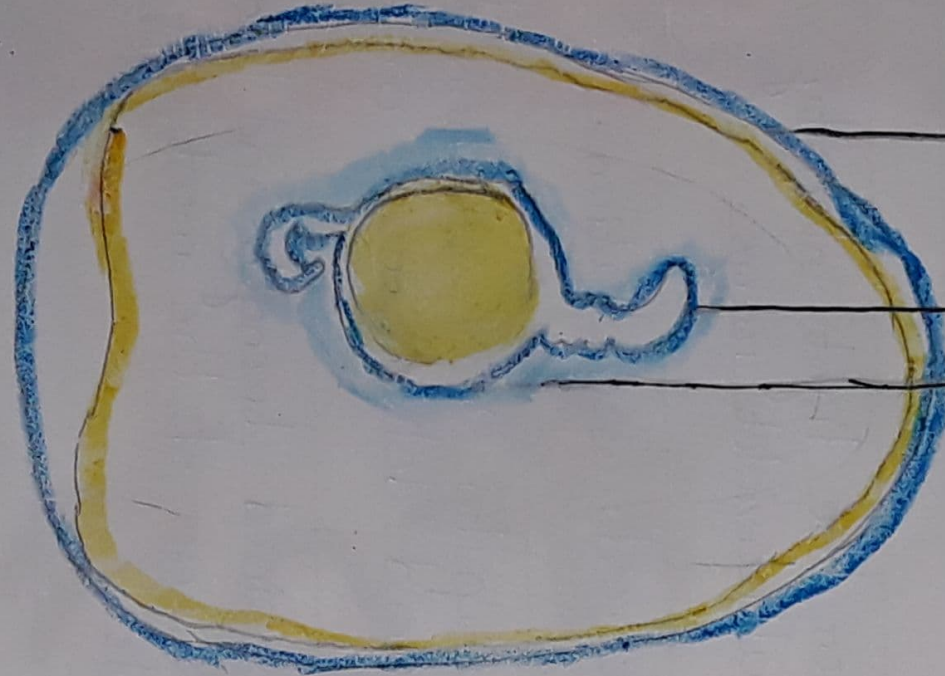


STRUCTURE OF AN EGG



EGG SHELL

YOLK

ALBUMEN

∴ Ch - 8 Animals :- How life goes on :-

(A) Tick (✓) the correct answer :-

(1) The process of producing young ones is called

(a) reproduction (b) digestion (c) photosynthesis

(2) The yellow portion inside an egg is the

(a) yolk (b) albumen (c) lemon

(3) The young one of a frog is called

(a) tadpole (b) larva (c) maggot

(4) Shedding of old skin by animals is called

(a) moulting (b) changing (c) reproduction

(5) Which of the following is the larvae of a housefly?

(a) maggot (b) nymph (c) pupa

(B) Unscramble the letters to get the names of four-egg-laying animals :-

zildra lizard nskae snake ifhs fish

wotlet turtle