

Ex - 15 (c)

1) ^

a) 8 days

Ans - 1 day = 24 hours

8 days =  $8 \times 24 = 192$  hours

b) 5 days 10 hours A

Ans - 1 day = 24 hours

5 days 10 hours =  $5 \times 24 + 10 = 130$  hours

c) 10 days 20 hours

Ans - 1 day = 24 hours

10 days 20 hours =  $10 \times 24 + 20 = 260$  hours

d) 6 days 2 hours

Ans - 1 day = 24 hours

$$6 \text{ days } 2 \text{ hours} = 6 \times 24 + 2 = 146$$

2) Convert into minutes

i) 3 hours -

Ans - 1 hour = 60 minutes

$$3 \text{ hours} = 3 \times 60 = 180 \text{ minutes}$$

b) 2 hours 6 minutes

Ans - 2 hours 6 minutes =  $2 \times 60 + 6 = 126$  minutes

c) 8 hours 40 minutes

$$8 \text{ hours } 40 \text{ minutes} = 8 \times 60 + 40 = 88 \text{ minutes}$$

d) 15 hours 30 minutes

Ans - 15 hours 30 minutes =  $15 \times 60 + 30 = 110$  minutes

3) Convert into seconds

a) 6 minutes

Ans. ~~6~~ 1 minute = 60 seconds

$$6 \text{ minutes} = 6 \times 60 = 360 \text{ seconds}$$

b) 2 minutes 4 seconds

Ans. 1 minute = 60 seconds

$$2 \text{ minutes } 4 \text{ seconds} = 2 \times 60 + 4 = 124 \text{ seconds}$$

c) 40 minutes 30 seconds

Ans. 1 minute = 60 seconds

$$40 \text{ minutes } 30 \text{ seconds} = 40 \times 60 + 30 = 2430 \text{ seconds}$$

d) 1 hour 2 minutes 30 seconds

1

$$1 \text{ hour} = 3600 \text{ } \cancel{60} \times 60 = 3600 \text{ seconds}$$

$$1 \text{ minute} = 60 \text{ seconds}$$

$$1 \text{ hour } 2 \text{ minutes } 30 \text{ seconds} = 3600$$

$$3600 + 2 \times 60 + 30$$

~~3600~~

$$= 3600 + 120 + 30$$

$$= 3750 \text{ sec}$$

$$\begin{array}{r} 3600 \\ 120 \\ + 30 \\ \hline 3750 \end{array}$$

4) Convert into minutes and hours seconds

a) 450 seconds

$$\begin{array}{r} 7 \\ 60 \overline{) 450} \\ \underline{- 420} \\ 30 \end{array}$$

Ans- 60 seconds = 1 minute

$$450 \text{ seconds} = 450 \div 60$$

$$= 7 \text{ min } 30 \text{ sec}$$

b) 540 seconds

$$\begin{array}{r} 9 \\ 60 \overline{) 540} \\ \underline{- 540} \\ 0 \end{array}$$

60 sec = 1 min

$$540 \text{ seconds} = 540 \div 60$$

$$= 9 \text{ min } 0 \text{ sec}$$

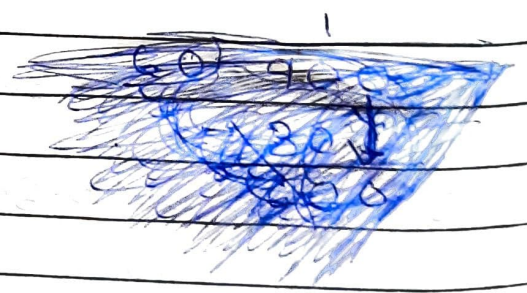
c) 900 seconds

~~60 sec~~

60 sec = 1 min

$$900 \text{ sec} = 900 \div 60$$

$$= 15 \text{ min } 0 \text{ sec}$$



$$\begin{array}{r} 15 \\ 60 \overline{) 900} \\ \underline{900} \\ 0 \end{array}$$

d) 1006 seconds

$$60 \text{ sec} = 1 \text{ min}$$

$$= 1006 \text{ sec} = 1006 \div 60$$

$$= 16 \text{ min } 46 \text{ sec}$$

$$\begin{array}{r} 16 \\ 60 \overline{) 1006} \\ \underline{- 600} \\ 406 \\ \underline{- 360} \\ 046 \end{array}$$

5) convert into hours and minutes

a) 135 minutes

$$\text{Ans} - 60 \text{ min} = 1 \text{ hrs}$$

$$= 135 \text{ min} = 135 \div 60$$

$$= 2 \text{ hrs } 15 \text{ min}$$

$$\begin{array}{r} 2 \\ 60 \overline{) 135} \\ \underline{- 120} \\ 15 \end{array}$$

b) 80 minutes

$$60 \text{ min} = 1 \text{ hrs}$$

$$= 80 \text{ min} = 80 \div 60$$

$$= 1 \text{ hrs } 20 \text{ min}$$

$$\begin{array}{r} 1 \\ 60 \overline{) 80} \\ \underline{- 60} \\ 20 \end{array}$$

c) 750 min

= 60 min = 1 hrs

$750 \text{ min} = 750 \div 60$

= 12 hrs 30 min

$$\begin{array}{r} 12 \\ 60 \overline{) 750} \\ \underline{- 60} \phantom{0} \\ 150 \\ \underline{- 120} \\ 30 \end{array}$$

d) 1000 min

= 60 min = 1 hrs

$1000 \text{ min} = 1000 \div 60$

= 16 hrs 40 min

$$\begin{array}{r} 16 \\ 60 \overline{) 1000} \\ \underline{- 60} \phantom{0} \\ 400 \\ \underline{- 360} \\ 40 \end{array}$$

6) Convert into days and hours

a) 72 hours

Ans - 1 day = 24 hrs

$72 \text{ hours} = 72 \div 24$

= 3 days

$$\begin{array}{r} 3 \\ 24 \overline{) 72} \\ \underline{- 72} \\ 0 \end{array}$$