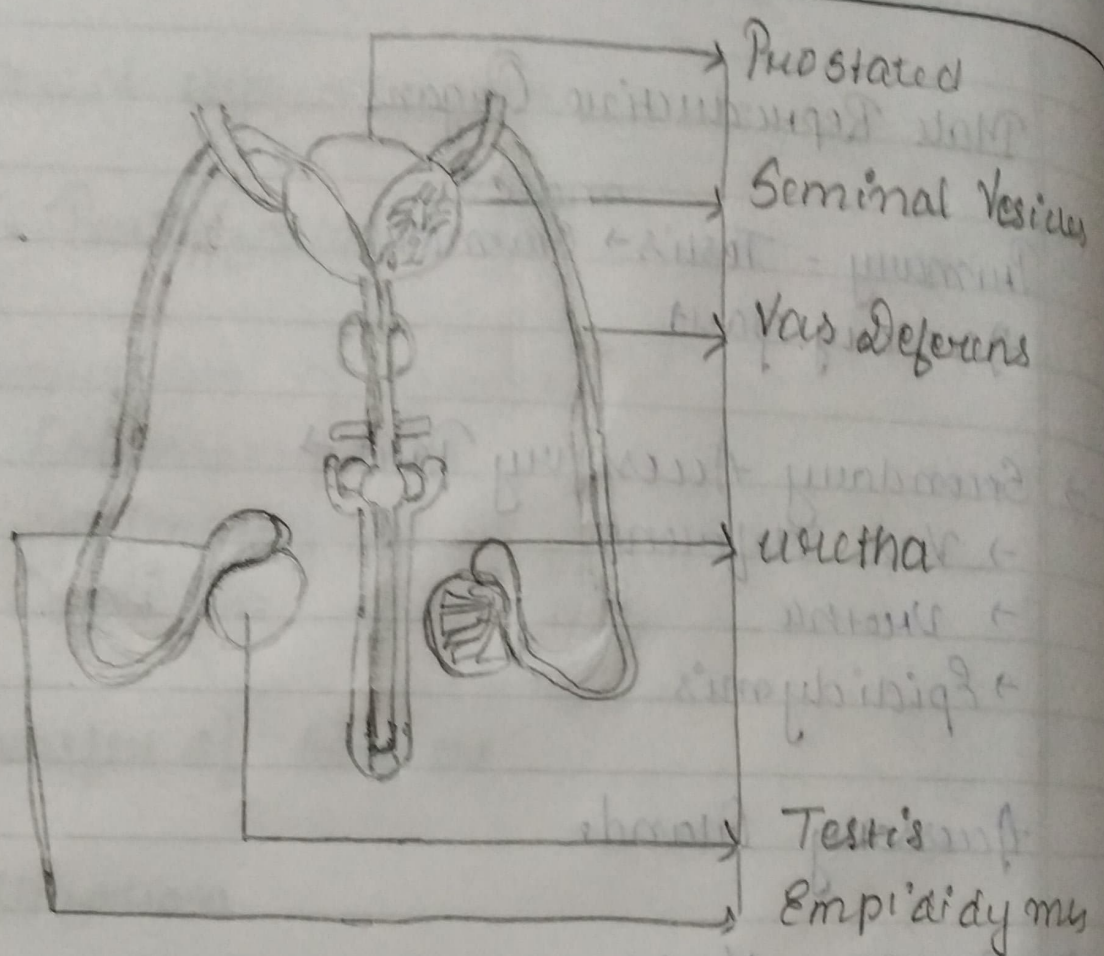


2)



(Male Reproductive System.)

3) In the process of reproduction, male and female produce special type of reproductive cells they are sperms and egg respectively, collectively known as gametes.

3) Male Primary Accessory parts is Testes. and their secondary accessory part are vas deference, Uthra, Epididymus.

The primary accessory organs helps in producing the egg and the sperm cell and hormones. All other organs are considered secondary accessory.