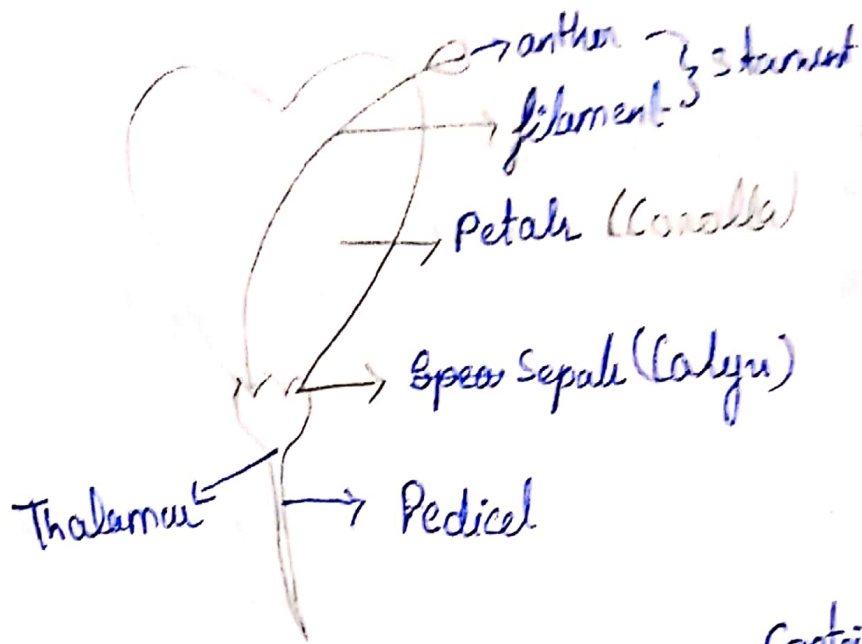


H-w) The flower may be unisexual (papaya) when it contain either stamens or carpels are also called incomplete flower. Biparental have botha carpel and stamant the can self pollinate.

- i) a) Bisexual
- ii) Staments
- iii) a) Continue the species generation
- iv) a) Androecium.



Whorl → Parts of a flower containing small subpart & each <sup>sepal</sup> contribute to the flower.

- Calyx → Contains ~~leaves~~ leaf-like structure called sepal which hold the flower.
- Corolla → Contains petals which are variously coloured & attract the pollinator.
- Androecium → It is male reproductive whorl containing anther & filament.
- Gynoecium → Female reproductive whorl that contains pistil or carpel comprising of stigma (to receive the pollen), style (to carry the pollen tube) & Ovary (site of reproduction).

Out of the 4 whorls 2 are primary (Androecium & Gynoecium) & 2 are accessory (Calyx; Corolla)

