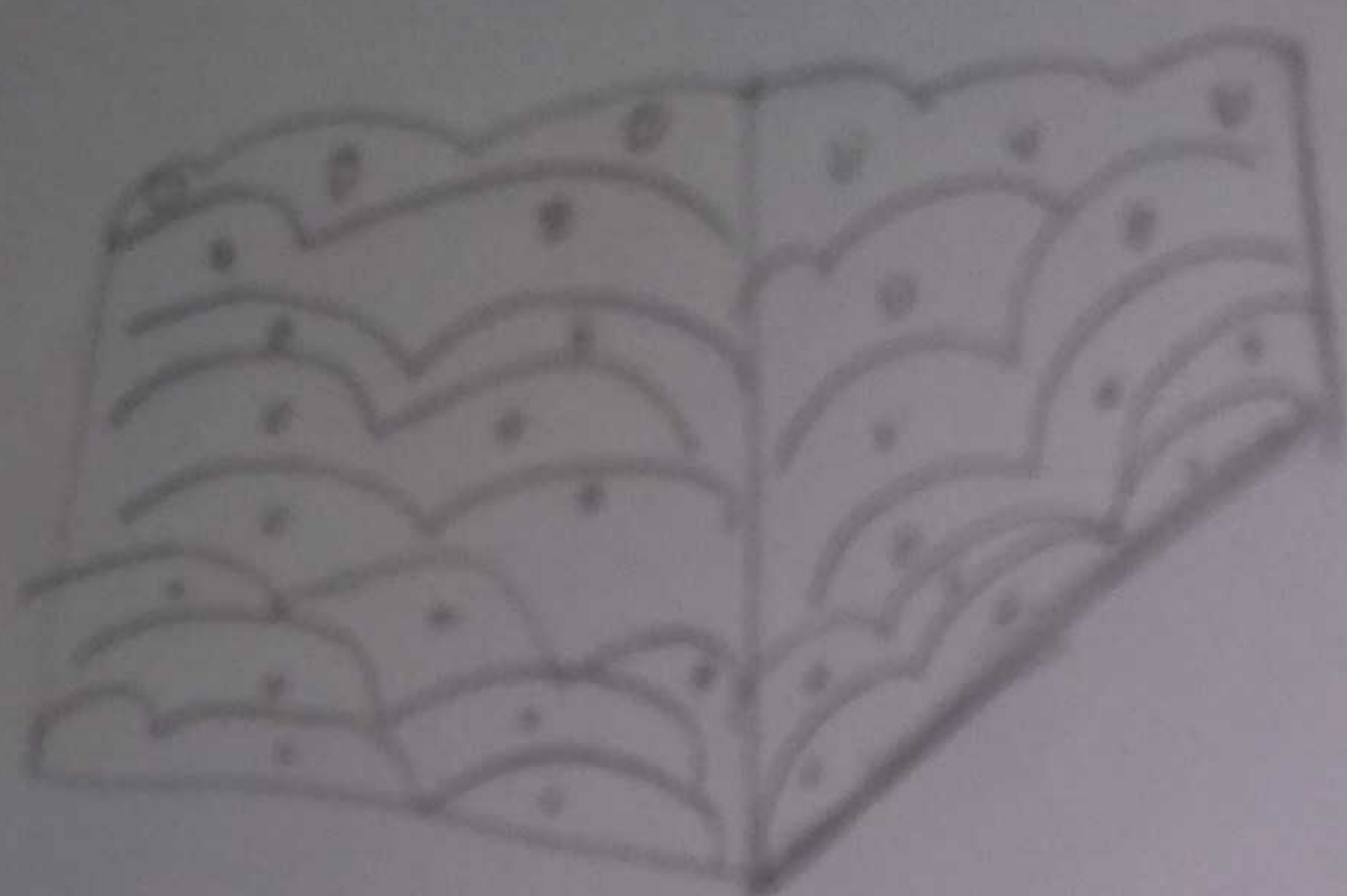




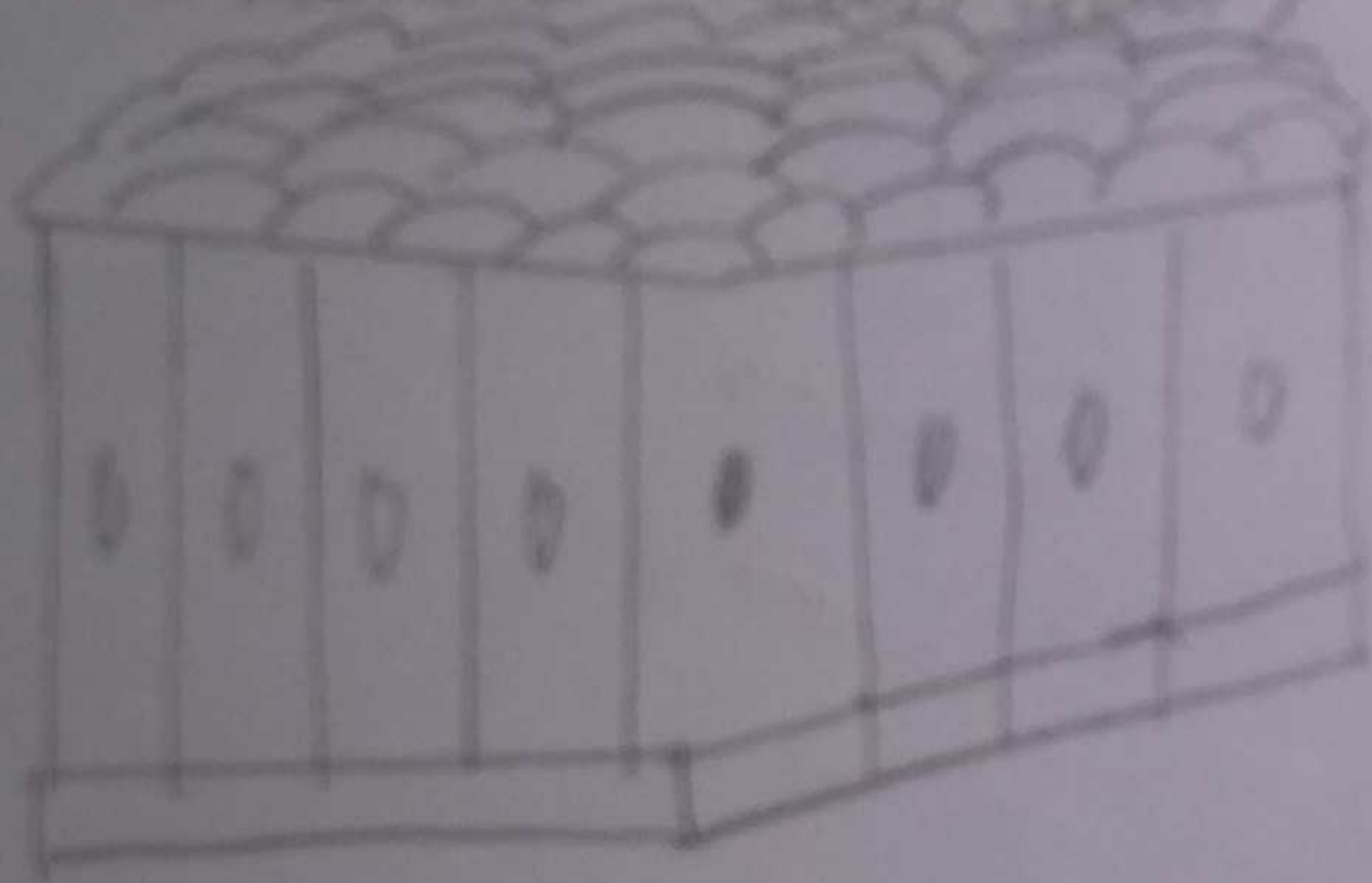
Squamous

(Function - Transport of Substances)



Striated Squamous

(Function - Desiccation Protection & Prevent Water loss)



Columnar

(Function - Facilitates movement of cellular wastes)



Cuboidal

(Function - secretion & absorption)

## Types of Muscular Tissue :-

➤ On the basis of their location, structure, & function, there are following three types of muscle fibres :-

➤ Striated muscles (stripped, skeletal or voluntary muscle).

➤ Smooth Muscles (unstriated, visceral or involuntary muscles).

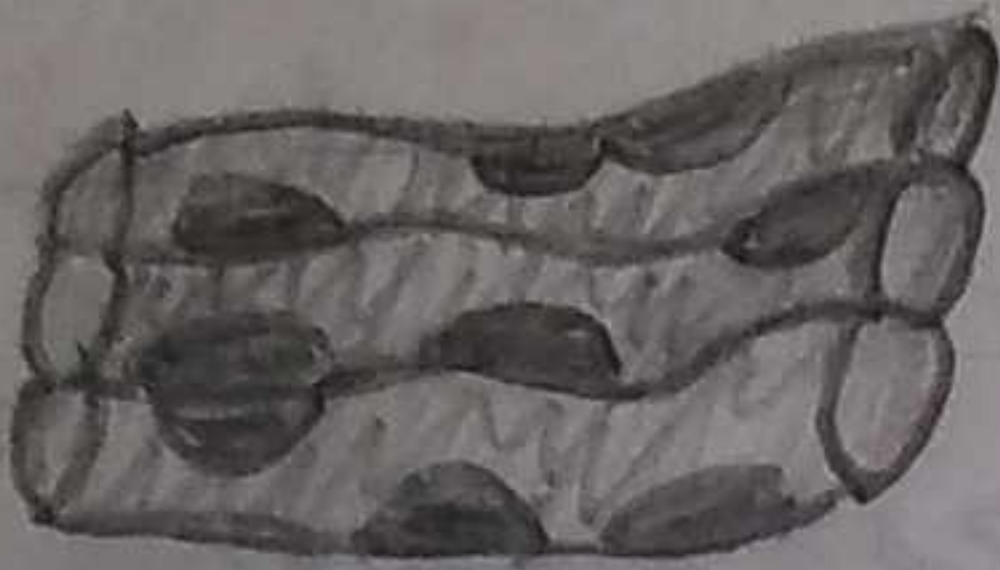
➤ Cardiac Muscles

### Skeletal Muscle :-

- Fibres - striated, tubular & multinucleated
- Voluntary
- Usually attached to skeleton.

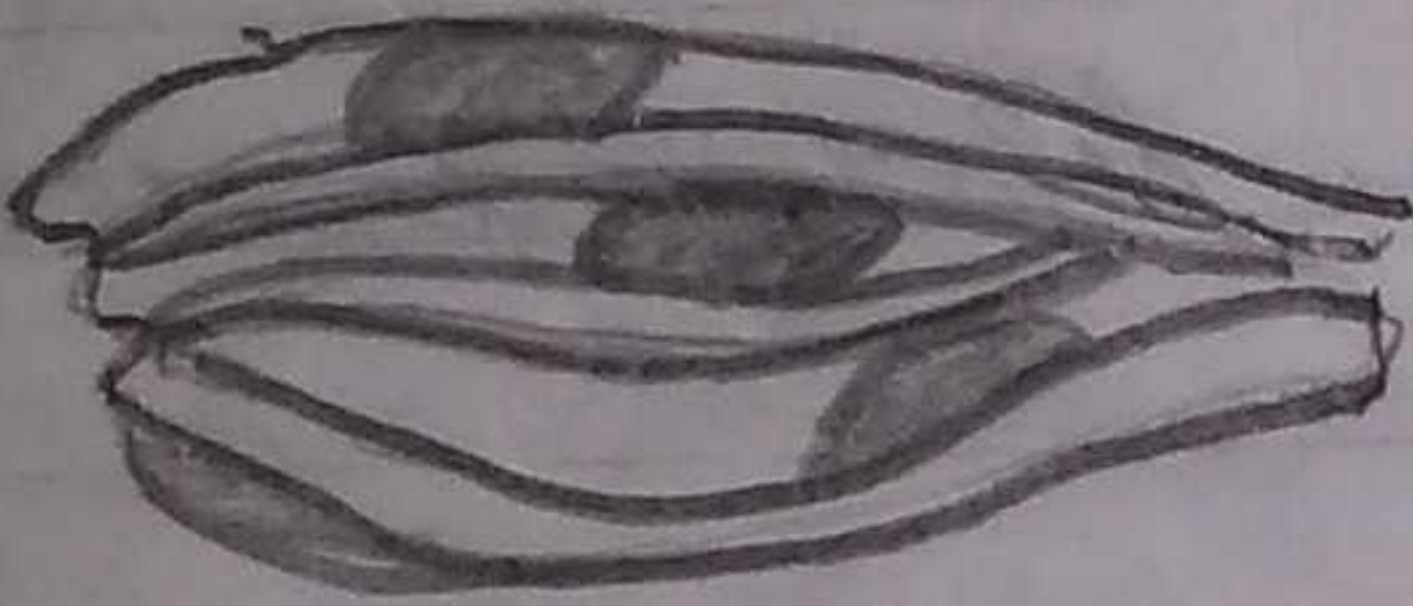
### Smooth Muscles :-

- Fibres - non-striated, spindle shaped, uninucleated.
- Involuntary
- Usually covering wall of internal organs.



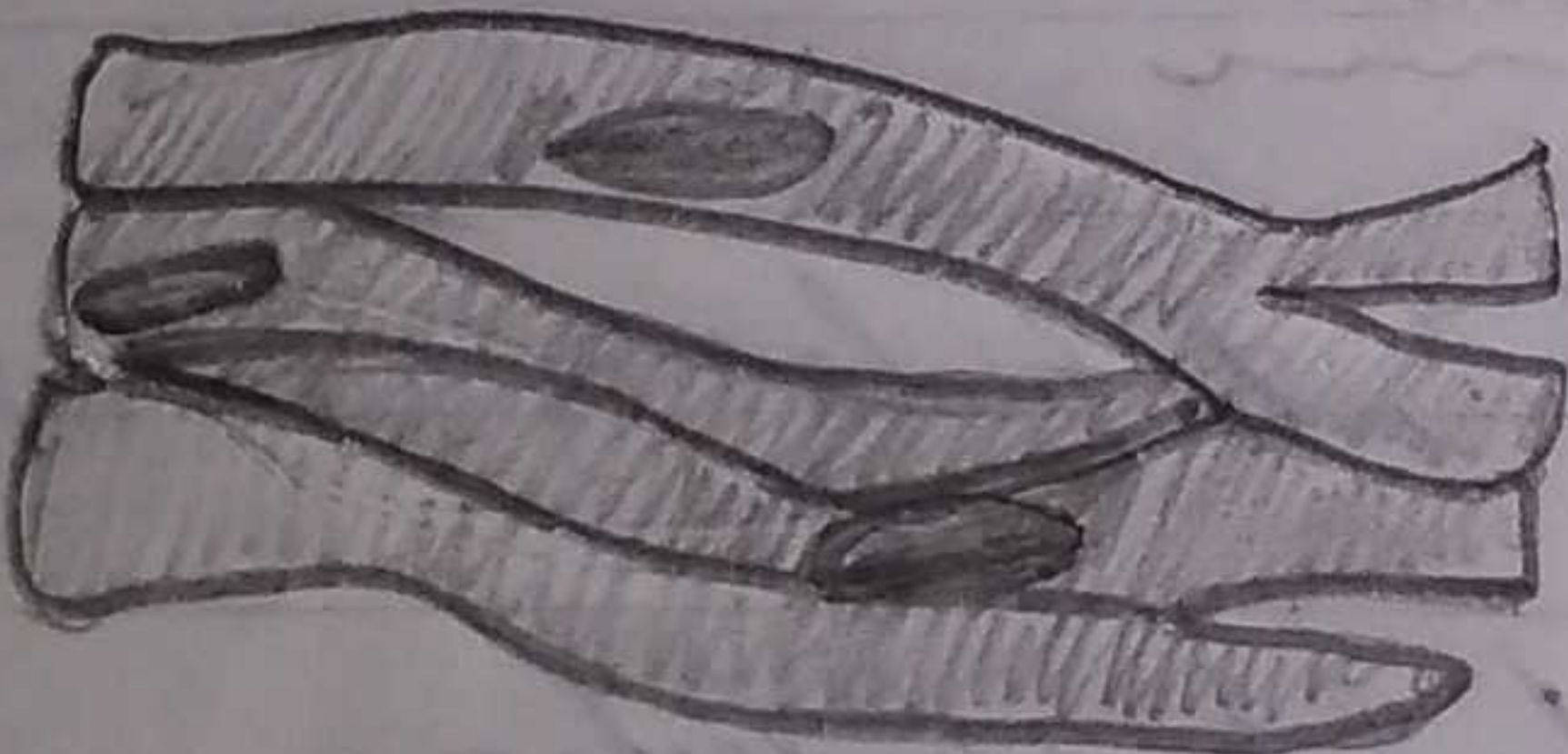
Skeletal  
Muscle

---



Smooth Muscles

---

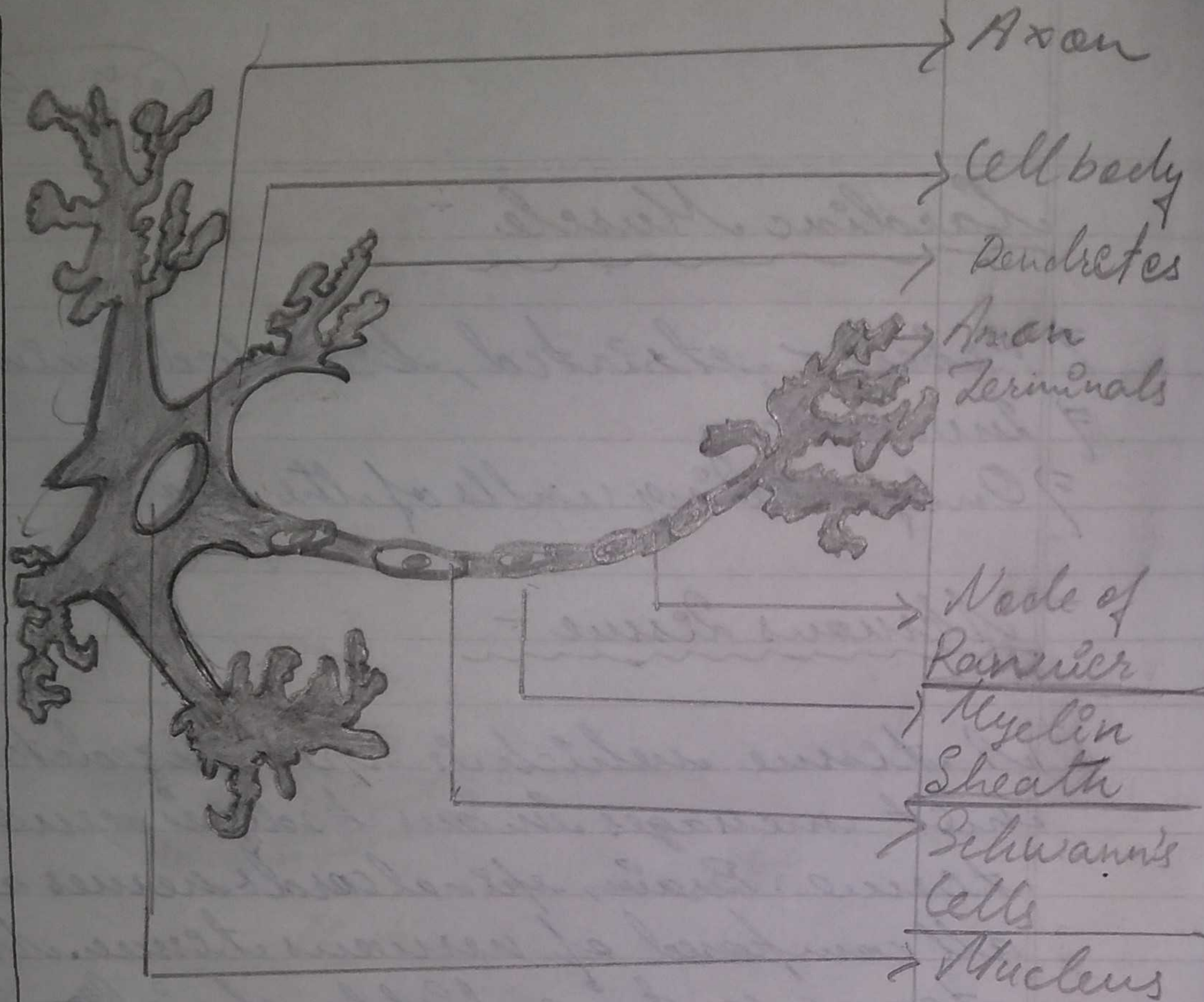


Cardiac Muscle

---

## Nervous Tissue :-

A tissue which is specialized to transmit messages in our body is nervous tissue. Brain, spinal cord & nerves are all composed of nervous tissue. Nervous tissue contains highly specialized unit cells called nerve cells or neurons.



→ Axon

→ Cell body

→ Dendrites

→ Axon  
Terminals

→ Node of  
Ranvier

→ Myelin  
Sheath

→ Schwann's  
Cells

→ Nucleus