

ASSIGNMENT

1) What is artificial pollination?

A- Artificial pollination is the dusting, often by hand, of fertile stigmas with the pollen from plants with desired characteristics.

2) What are the steps of artificial pollination?

A- ★ The male and female flowers are chosen from different plants. Cover the flowers to keep off the pollinating insects.

★ After the flowers are sexually mature, pollinate them by one of the artificial methods.

★ Gently rub the pistil of the female flower to the stamens and blow on it to ensure that the pollen has stuck over it.

★ Cover the fertilized flowers again until the fruits start forming.

3) Why artificial pollination is beneficial to horticulturists?

A- ★ It produces large nos. of fruit and increases size.

★ We can produce a large variety of hybrid plants by the use of artificial pollination.

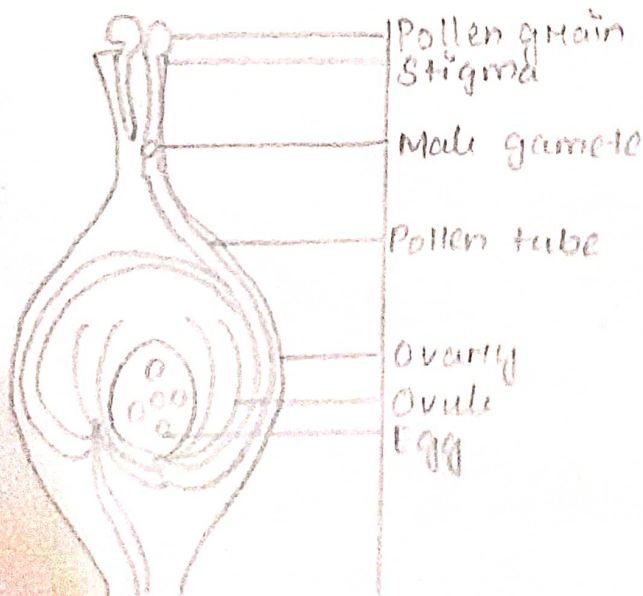
Assignment

- 1) Distinguish between fertilization and pollination. Mention the site and product of fertilization in flowers.

A-	POLLINATION	FERTILIZATION
	* Physical process.	* occurs Biological process.
	* Occurs only in flowering plants.	* occurs Occurs in almost in every living being present on Earth.
	* External process	* Can be either external / internal

- 2) Draw a neat, labelled diagram of a pistil showing pollen tube growth and its entry into the ovule.

A-



Double fertilization