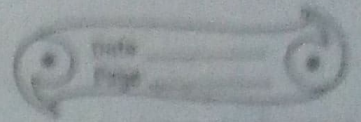


# Home Assignment

## Life Processes



1) Define double Circulation. Describe with a neat Schematic diagram.

Ans) • The blood Circulation in human beings is an example of double Circulation.

• In human Circulatory System the blood from heart to the lungs & back to the heart is called Pulmonary Circulation & the blood from the heart to the rest part of the body back to the heart is called Systemic Circulation. This two types of Circulation taken together make double Circulation.

2.) Draw a neat labelled diagram of human heart & explain the different parts with function.

Ans) → The right ventricle gets blood from the right atrium & pumps it to the lungs to load it with oxygen. The left atrium receives oxygenated blood from the lungs & pumps it to the left ventricle. The left ventricle is the

Lung Capillaries.

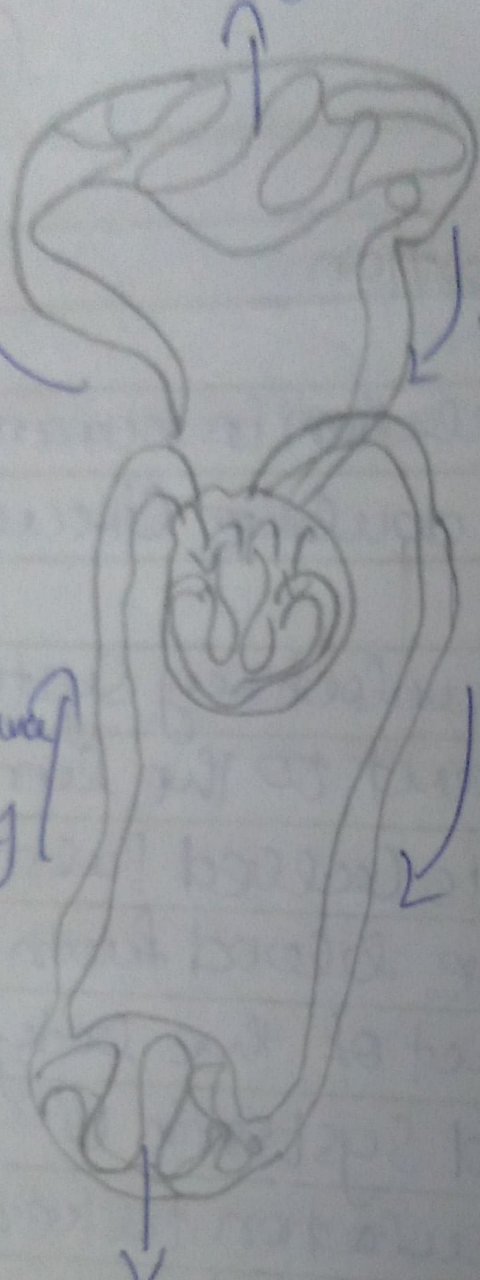
Pulmonary artery to lung.

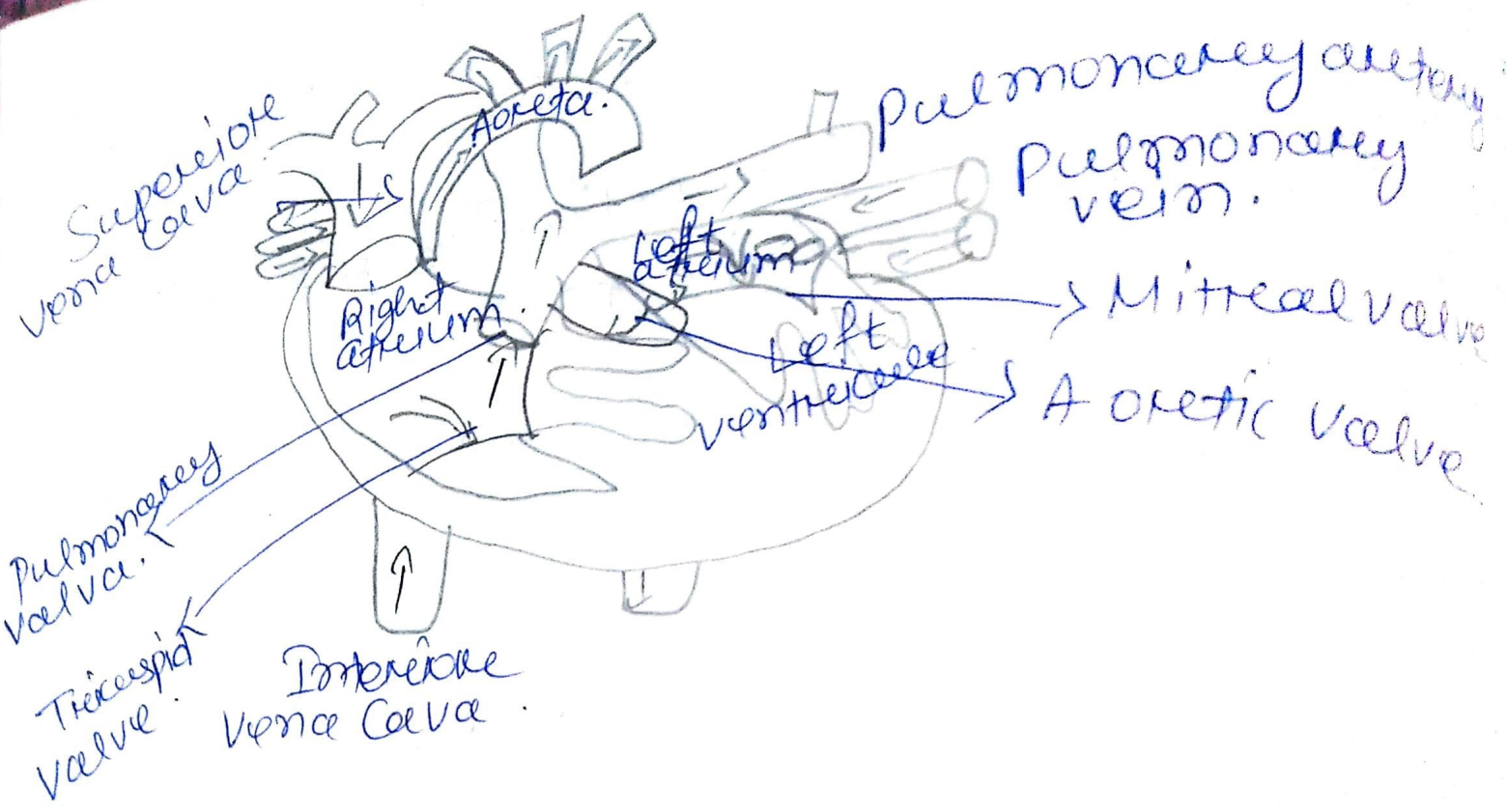
Pulmonary vein to lung.

Vena Cava from body.

Aorta to body.

Capillaries of body organs apart from the lungs.





Strongest Chamber of the heart. It pumps oxygen-rich blood to the rest of the body.