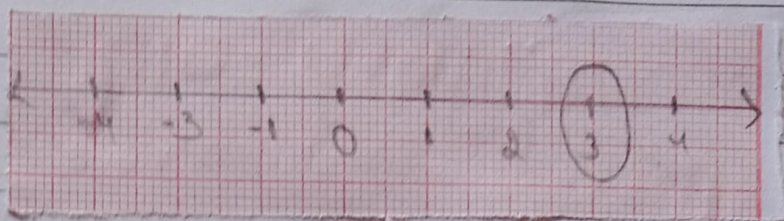


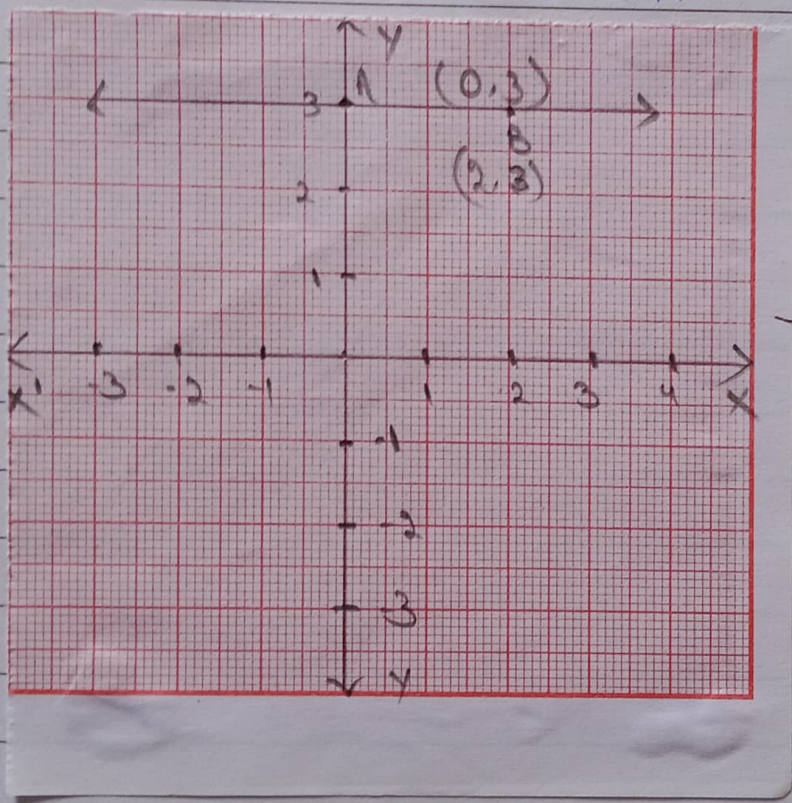
EXERCISE 4.4

1) i) in one variable.



The representation of $y = 3$ on the number line.

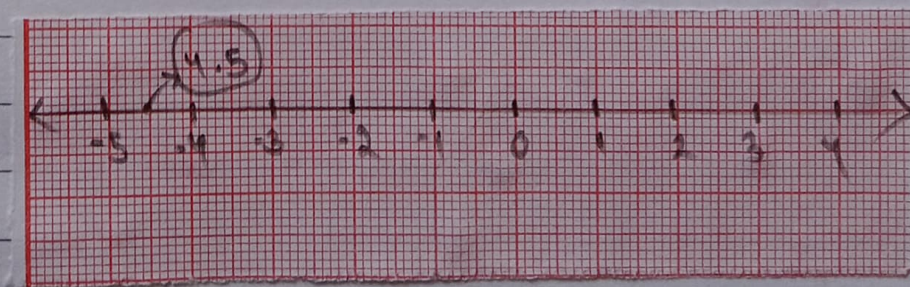
ii) The graph AB is a line parallel to the x -axis at a distance of 3 units above it.



2. i) in one variable.

$$2x + 9 = 0$$

$$x = \frac{-9}{2} = -4.5$$



The representation of $2x + 9 = 0$ on the number line.

ii)

In two variables

