

1) Fertilisation

Pollination

→ The fusion of male & female gametes inside

The process by which pollen grains are transferred to the stigma.

→ It occurs ~~outside~~ inside the plant

It occurs ~~inside~~ outside the plant.

→ It does not require agents

It requires agents in most cases.

2) Fertilisation process takes place in the ovary. After fertilisation, the egg cell & pollen grains develop into zygote.

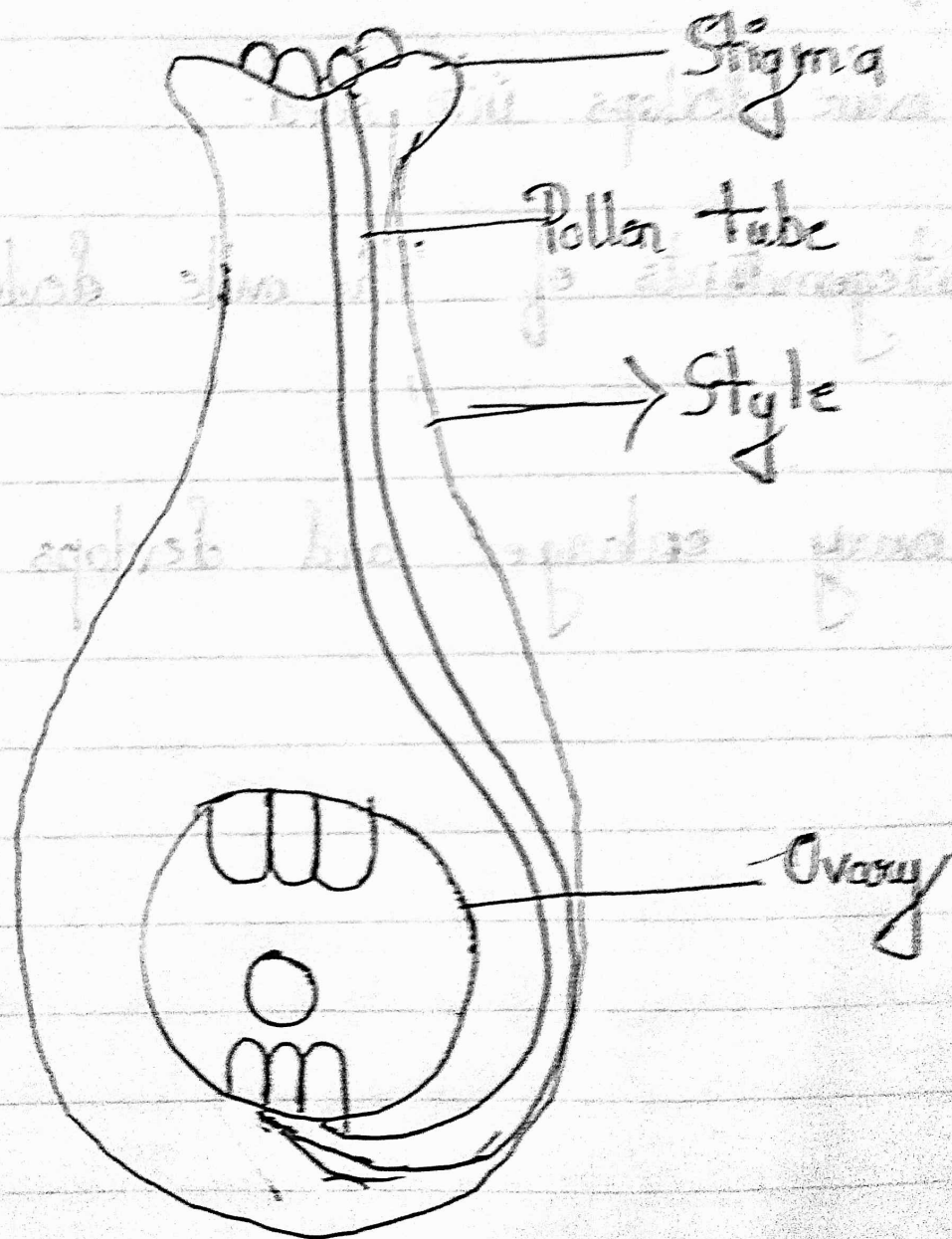


Fig- Entry of pollen grains into ovary.