

short question answer

3. Differentiate between the following pairs of terms:

(a) Radicle and plumule

A- The Radicle develops into a root, while the plumule develops into a shoot.

(b) Helium and micropyle.

A- Helium is the inner concave side of the seed. Where the seed was attached to the fruit wall. Micropyle is a small pore which absorbs and allows water required for germination.

4. Give two functions of a fruit.

A- Two functions of fruit are:

① It protects the seed from the unfavorable environment conditions.

② fruits store food inside them.

10. Name the part of the seed from which the following are given out:

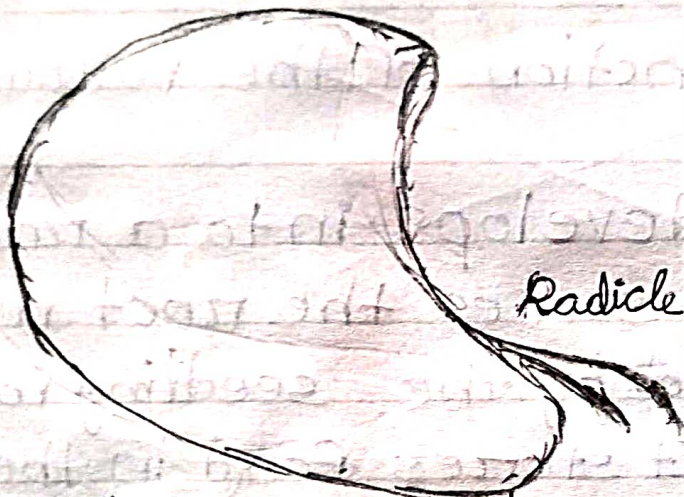
(a) Roots: Radicles

(b) leaves: Plumule

11-

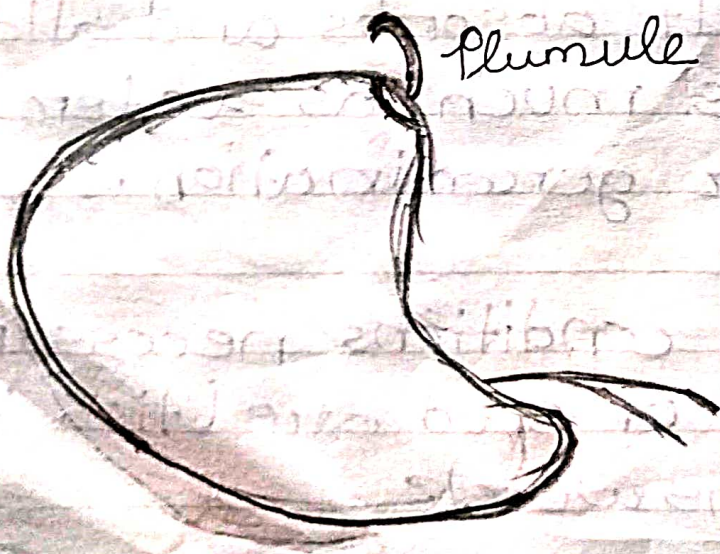


complete seed



Radicle

radicle emerged



Plumule

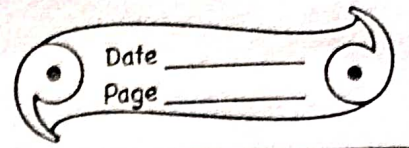
plumule emerged

4. With the help of a suitable labelled diagram, describe the structure of a dicot seed.

A The bean seed is an example of a dicot seed. whose diagram is shown below. The green outermost covering of the seed coat. It protects the seed from insects and bacteria, as well as from mechanical injury. The seed coat is again made up of two parts. The outer exposed part is called the testa and the inner part is called tegmen. A scar called

...
... into the bottle.

... and blow air into



hilum is present in the inner concave side of the seed. This is the place where the seed is attached to the fruit wall. Above the hilum there is a small pore called micropyle. It absorbs and allows the entry of water required for germination. The seed is made up of two fleshy seed leaves called the cotyledons. They contain stored food materials which is used by the seedling for growth. In between the two cotyledons a delicate embryo is located which consists of radicle and plumule. The radicle develops into a root and plumule develops into a shoot.

