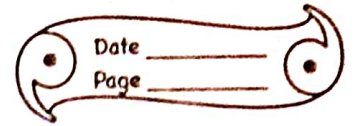


HW-13 July - 21



Q- Trace the pathway of impulse conduction in your body.

Ans- Impulse is a self propagated electro-chemical current that travels from one end to another of a neuron for the passage of a message. The pathway of impulse conduction in our body is:-

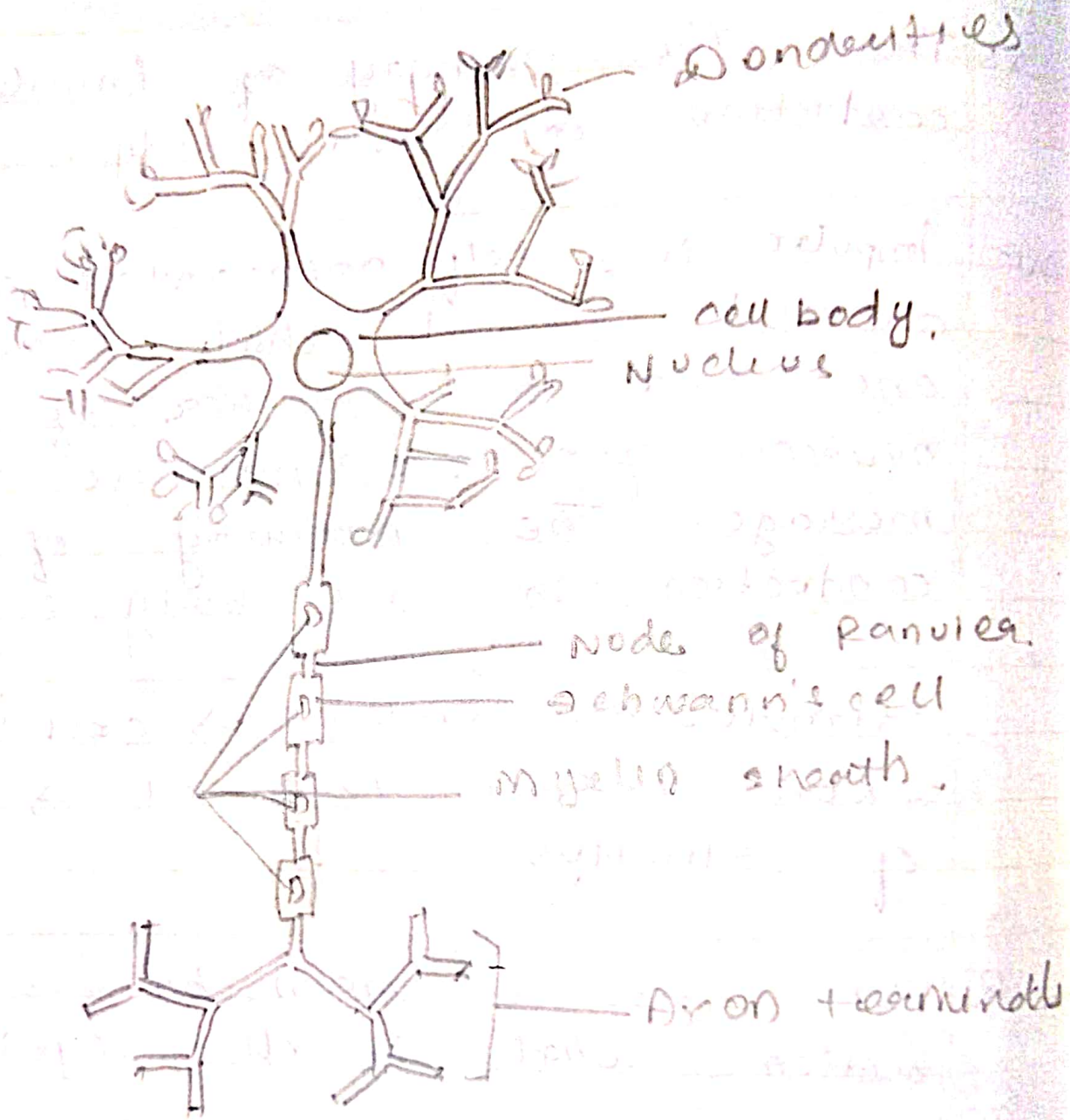
Stimulus  $\rightarrow$  Dendrite  $\rightarrow$  cell body  $\rightarrow$  axon  $\rightarrow$  axon terminal  $\rightarrow$  passage of stimulus.

Q- what do you mean by reflex action? what is its significance?

Ans- A reflex action is an quick involuntary action in response to an external or internal stimulus, generally without involvement of the brain.

\* It is an involuntary response

①





of effectors to the stimulus and it helps us in protecting us from any sudden stimulus which may harm us & thus takes care of the survival of an organism.

Q- classify neurons on the basis of neurites.

Ans- Receptor - The distal ends of a dendrite respond to a stimulus by initiating a nerve impulse in a sensory neuron.

\* Sensory Neuron - The nerve impulse passes from the receptor to the axonal terminal branches of the sensory neuron in the spinal cord.

\* Motor Neuron :- It transmit the impulse generated by the sensory neuron in the center to the effector organ of the body that will respond.

★

effector :- It is the organ of the body that responds to motor nerve impulse.