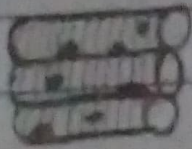


## Home Assignment

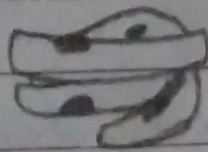
Q. Draw the diagram of three different types of muscles.  
Write two characteristics of each type.

Ans. 1) Skeletal Muscles



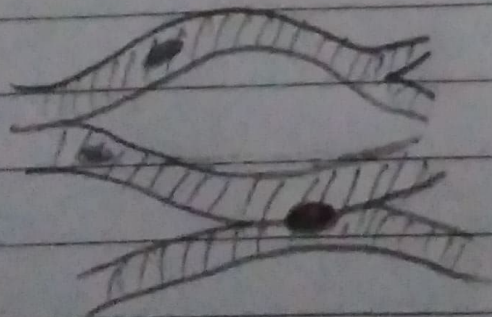
- > Fibres: Striated, tubular & multi nucleated
- > Usually attached to skeleton.

2) Smooth Muscles



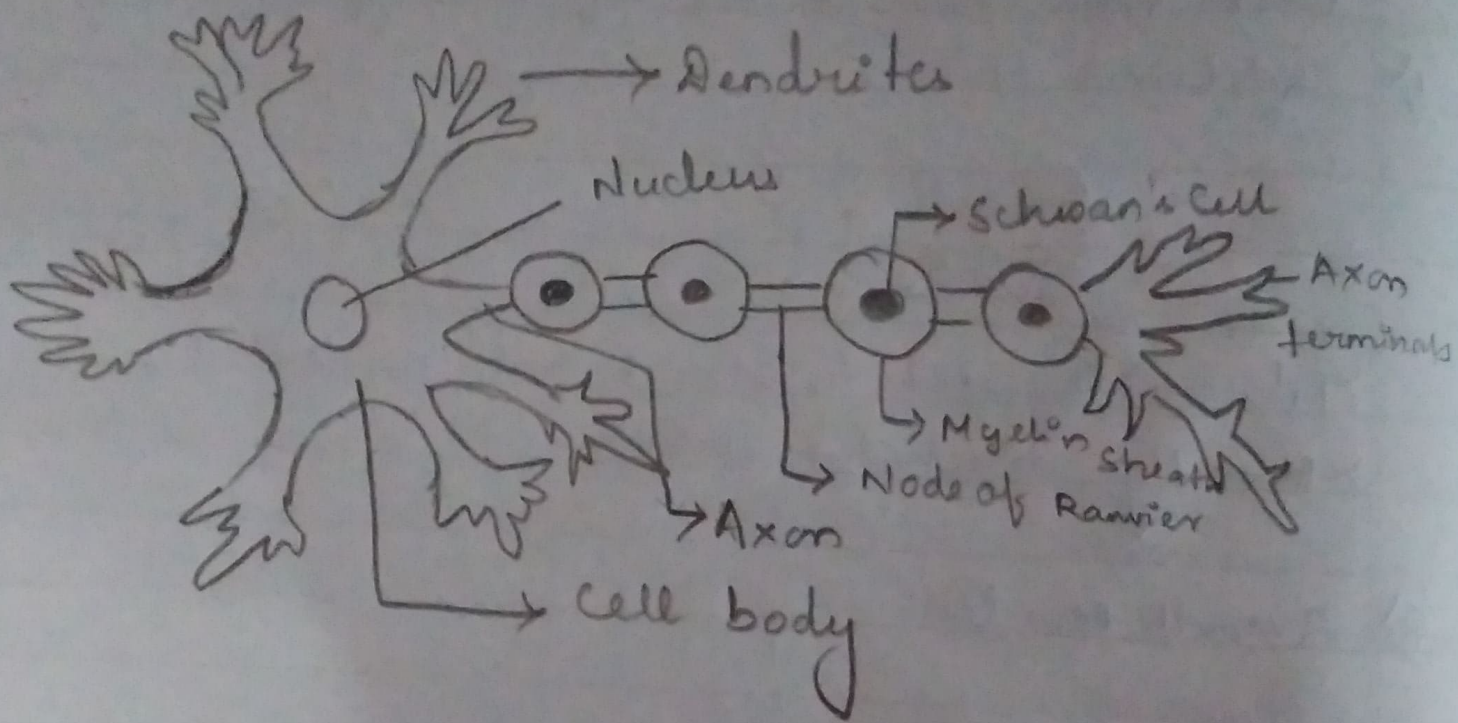
- > Fibres: Non striated, spindle shaped & uninucleated
- > Usually covering a wall of internal organs.

3) Cardiac Muscles



- > Fibres: Striated, branched & uninucleated
- > Only covering walls of the heart

Q. Draw the diagram of nervous tissue



Structure of typical Neuron