

# Home Assignment

Date \_\_\_\_\_

Page \_\_\_\_\_

23

1. ~~Draw~~ Differentiate b/w 3 types of muscular tissue structurally

(i) Striated Muscles:- They are also called as voluntary muscle. They are multinucleated and unbranched.

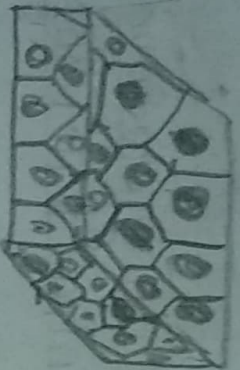
(ii) Non-striated Muscles:- They are involuntary muscles. They are uninucleated and spindle shaped.

(iii) Cardiac muscle fibres:- They are also involuntary muscles. They are uninucleated and branched.

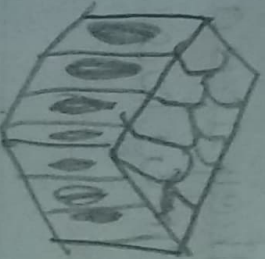
Q. Types of Epithelial Tissue.



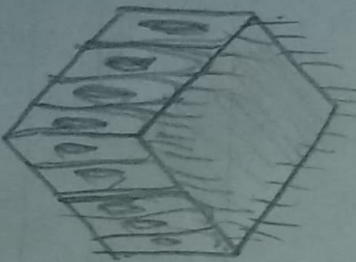
Squamous tissue



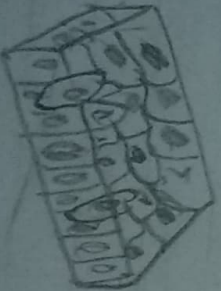
Cuboidal Tissue



Columnar Tissue



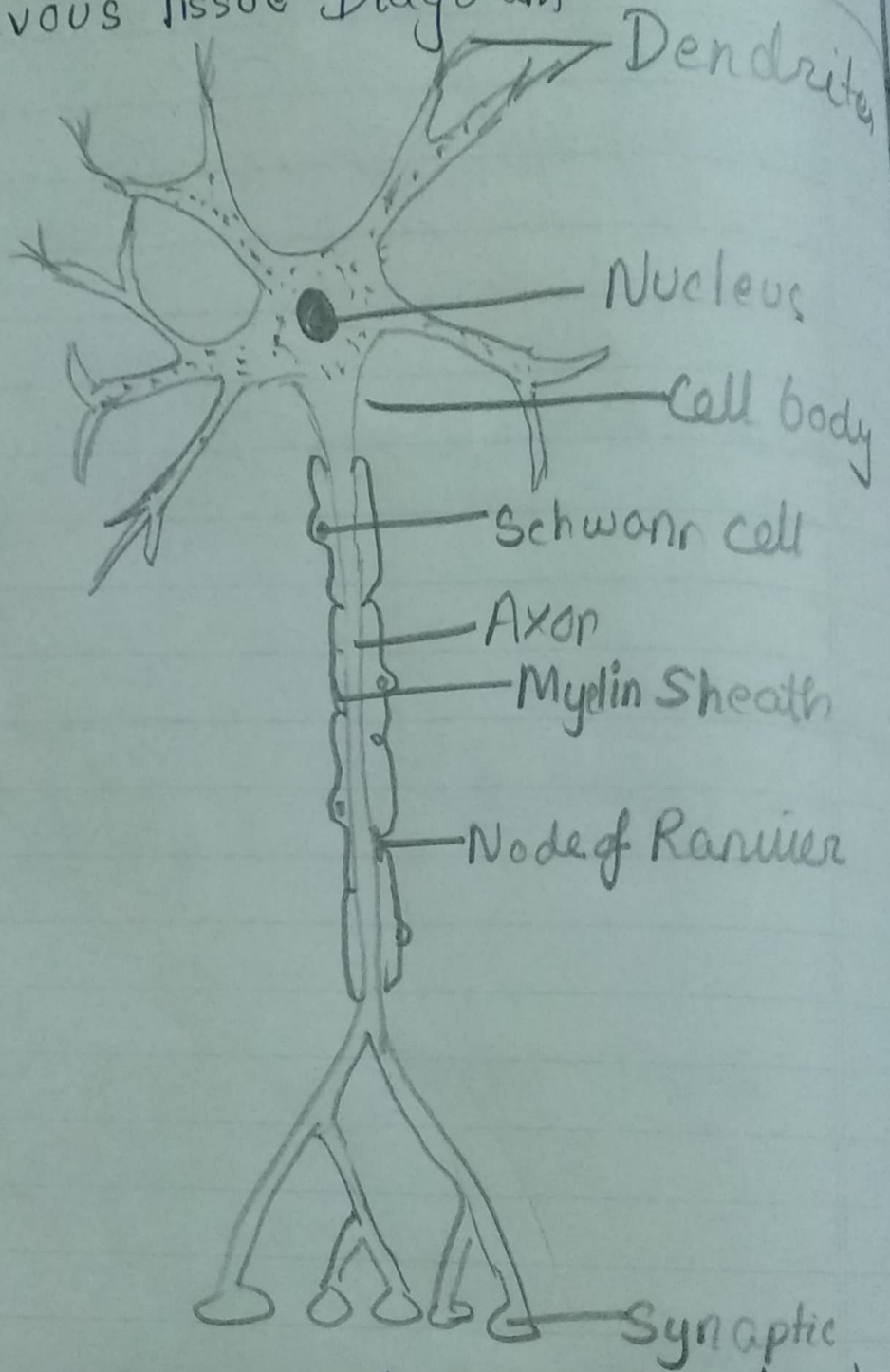
Ciliated Tissue



Glandular Tissue

CW

Q7 Nervous Tissue Diagram



Nervous Tissue is longer than other tissues because it needs more surface area to pass the signals to cell by cell