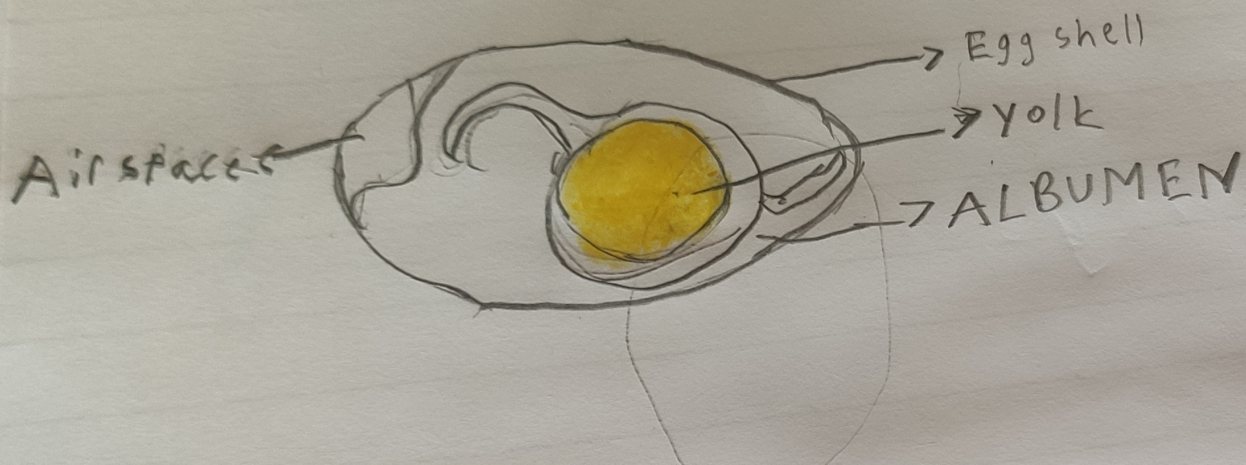


H/w Ch Animals ; How life goes on

20/08/21

Internal structure of an egg



Draw the internal structure of an egg and do the questions A & B in your notebook.

2010801 Ch-8 Animals: How life goes on

A. Tick (✓) the correct answers.

1. The process of producing young ones is called.

- ✓
a. reproduction b. digestion ~~c. photosynthesis~~
c. photosynthesis

2. The yellow ~~part~~ portion inside an egg is ~~bodies~~.

✓ a. yolk b. albumen c. lemon

3. The young one of a frog is called,

✓ a. tadpole b. larva c. maggot

4. Shedding of old skin by animals is called,

✓ a. moulting ~~b. changing~~ c. reproduction

5. Which of the following is the larva of a house fly?

a. pupa b. nymph ✓ c. maggot

B. Unscramble the letters to get the names of four

egg laying animals:

1. ns kae - Snake
2. ^{ifhs} ~~h~~ - fish
3. u pttlet - turtles
4. Zidlna - ~~z~~dra lizard