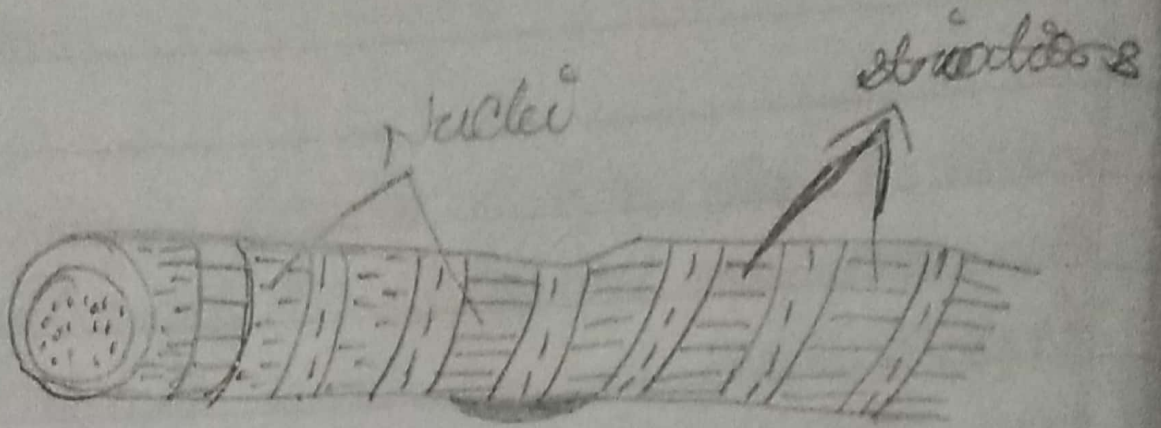
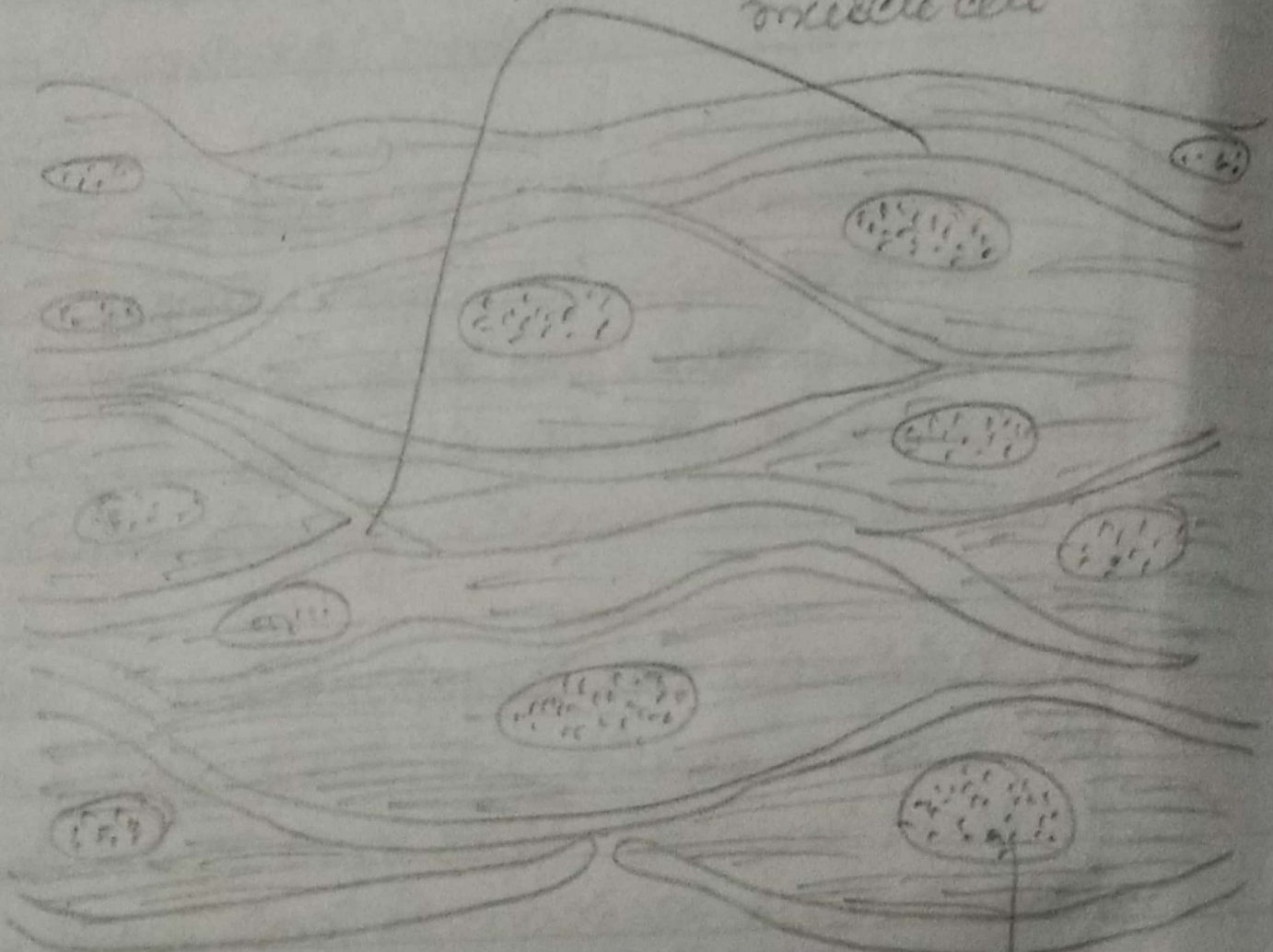


1)



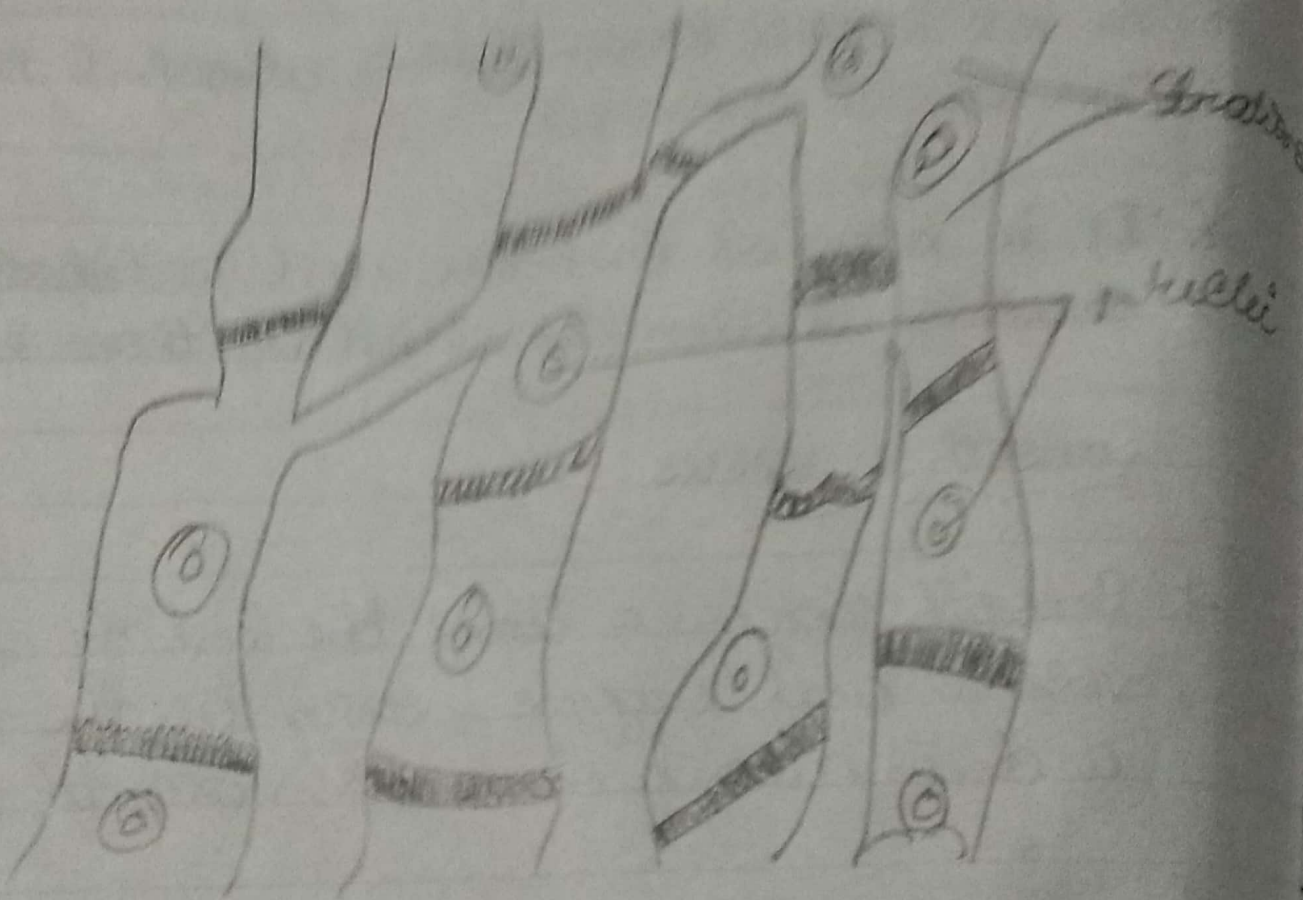
Striated muscle

Spindle shaped muscle cell.



~~Striated~~ Smooth muscles

nucleus



Cardiac muscle



## 2) Skeletal muscles:-

- \* The specialised tissue that is attached to bones and allows movement.
- \* It is attached to bones and contracting the muscles causes movement of those bones.

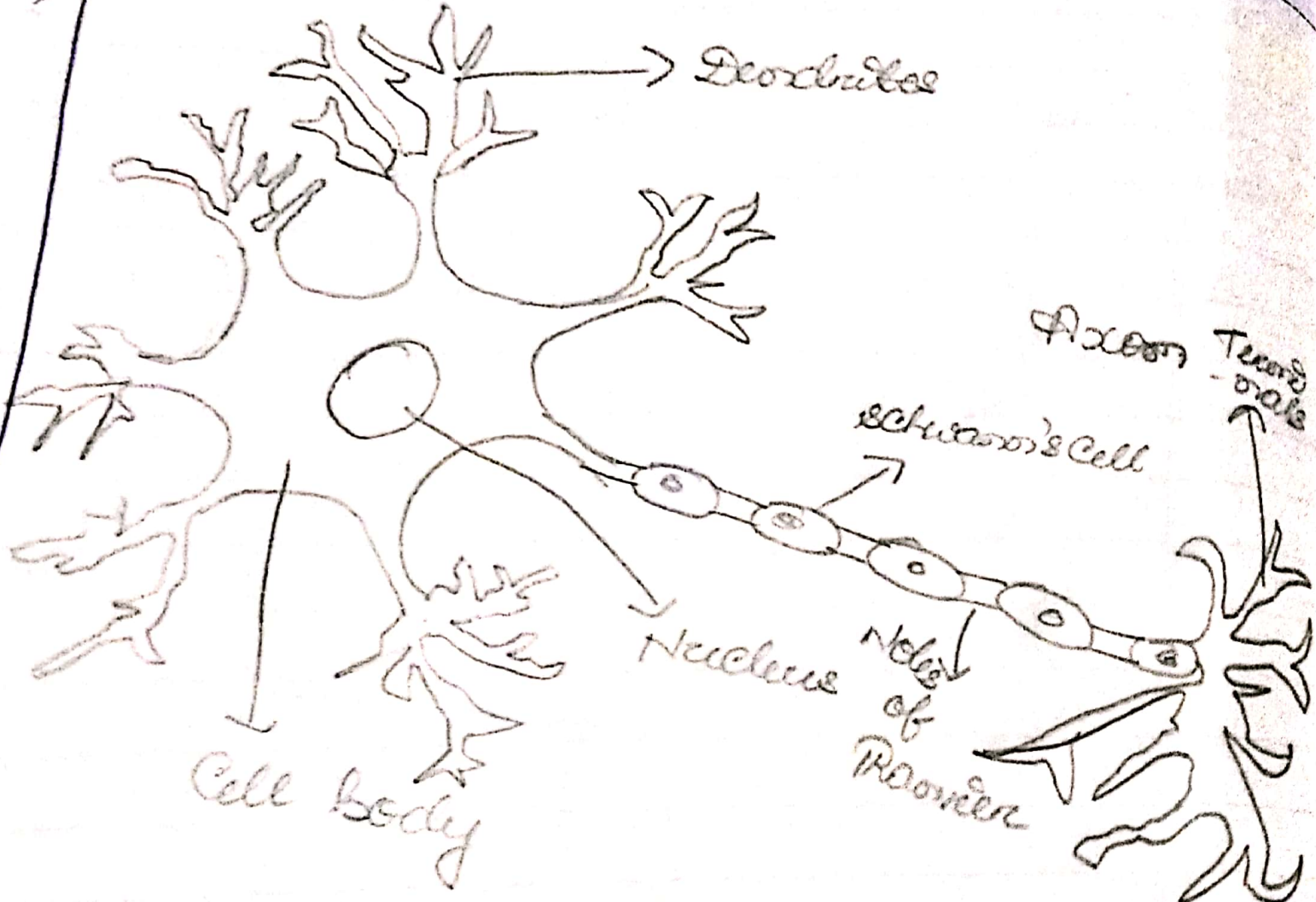
## Smooth muscles:-

- \* Smooth muscles lines the inside of blood vessels and organs, such as the stomach and is also known as visceral muscles.
- \* Its role is to move food along the digestive tract and maintaining blood circulation through the blood vessels.

## Cardiac muscle:-

- \* It is located in heart, it pumps blood around the body. It helps in contraction of heart.
- \* Signals from the nervous system control the rate of contraction.

3)



Nervous tissue  
(Neuron)