

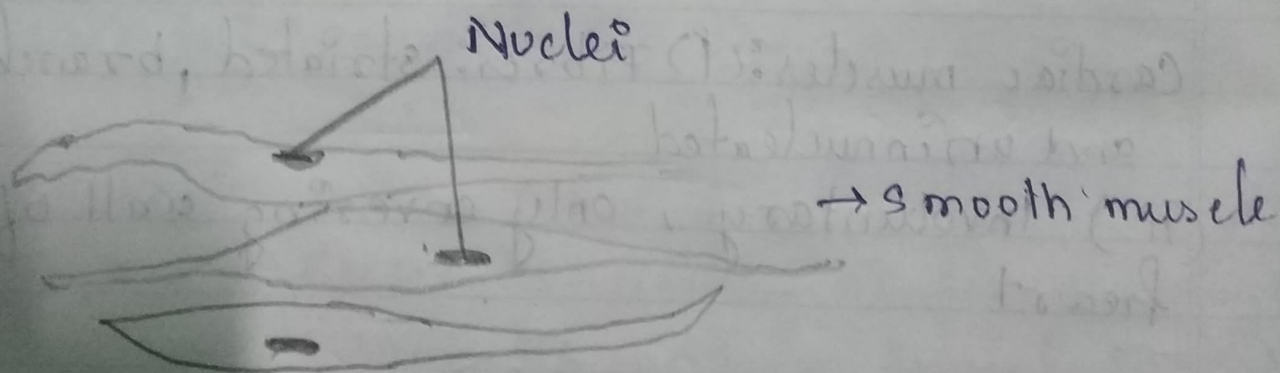
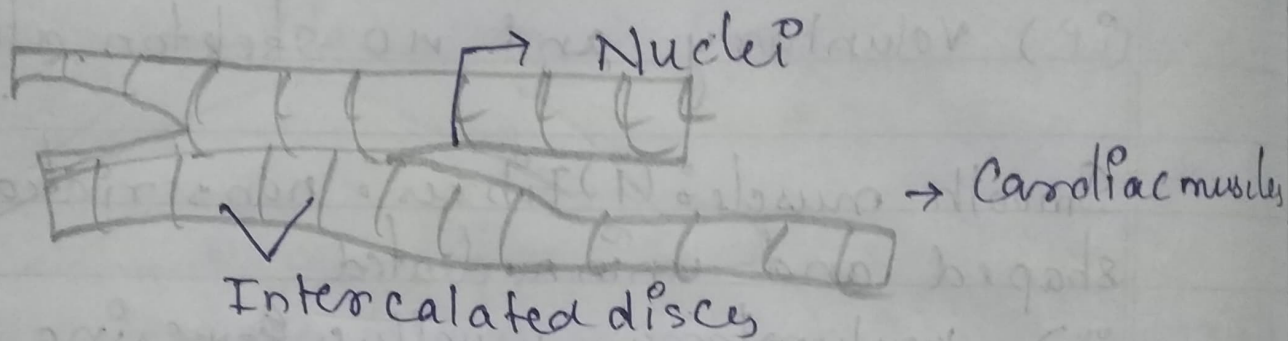
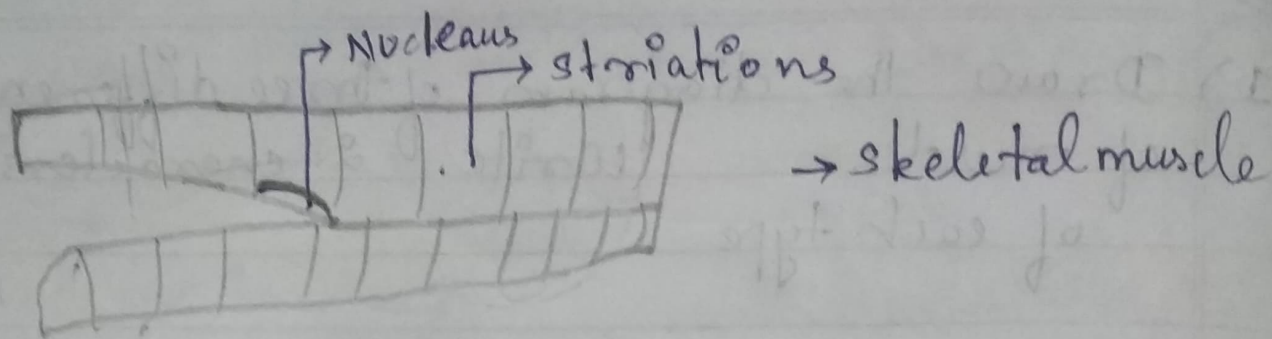
(1) Draw the diagram of three different types of muscles. Write 2 characteristics of each type

Skeletal Muscle: (i) Fibres: striated, tubular and multinucleated
(ii) Voluntary and no skeleton attached.

Smooth muscle: (i) Fibres: nonstriated, spindle shaped and uninucleated
(ii) Involuntary, usually covering wall of internal organs.

Cardiac muscle: (i) Fibres: striated, branched and uninucleated
(ii) Involuntary, only covering wall of the heart

Three types of muscles



Three Types of Muscles

2)

