

1) Make a comparison and write down ways in which plant cells are different from animal cells.

Ans →

ANIMAL CELL

PLANT CELL

→ Animal cell do not have cell wall

→ Plant cell have cell wall.

→ Irregular or round shaped.

→ Square or rectangular shaped

→ Plastids are absent.

→ They are present.

→ They are smaller as they don't have vacuole which occupies a large space.

→ They are bigger or larger as they have a definite vacuole

HWO  
16/4/20

# THE FUNDAMENTAL STRUCTURE OF LIFE

2) Difference between Prokaryotic and Eukaryotic.

Prokaryotic

Eukaryotic

→ They have a weakened nucleus.

→ They have a definite nucleus.

→ Contains single chromosomes.

→ It contains more than 1 chromosomes.

→ Cells divide by fission or budding.

→ Cell divides by mitosis and meiosis.

3) what would happen if the plasma membrane ruptures or breaks down?

Ans → Plasma Membrane is a outer covering of the cell. If it ruptures or breaks flow of in and out of selective substances will stop. The cell then lacks in  $O_2$  and  $H_2O$  by the process of osmosis and diffusion. So, as a result the cell will die.

#### NCERT EXERCISES:

4) what would happen to the life of a cell if there was no Golgi apparatus?

Ans → If golgi apparatus is not present in a cell following things will happen?

→ It will hamper the formation of new cells

→ Plasma membrane will be affected

→ The packaging and transport of materials would cease.

→ Lysosomes would not be produced

5) Which organelle is known as power house of the cell? Why?

Mitochondria is known as Powerhouse of the cell because it releases the energy required for different activities of life.

6) Where do the lipids and proteins constituting the cell membrane get synthesised?

Ans → In Endoplasmic Reticulum (ER)

7) How does Amoeba obtain its food?

Ans → Amoeba obtain its food by the process of Endocytosis. It engulfs ~~pseudopodia~~ food by pseudopodia and forms a vacuole. When the food gets trapped Amoeba secretes the digestive enzymes and obtains it.

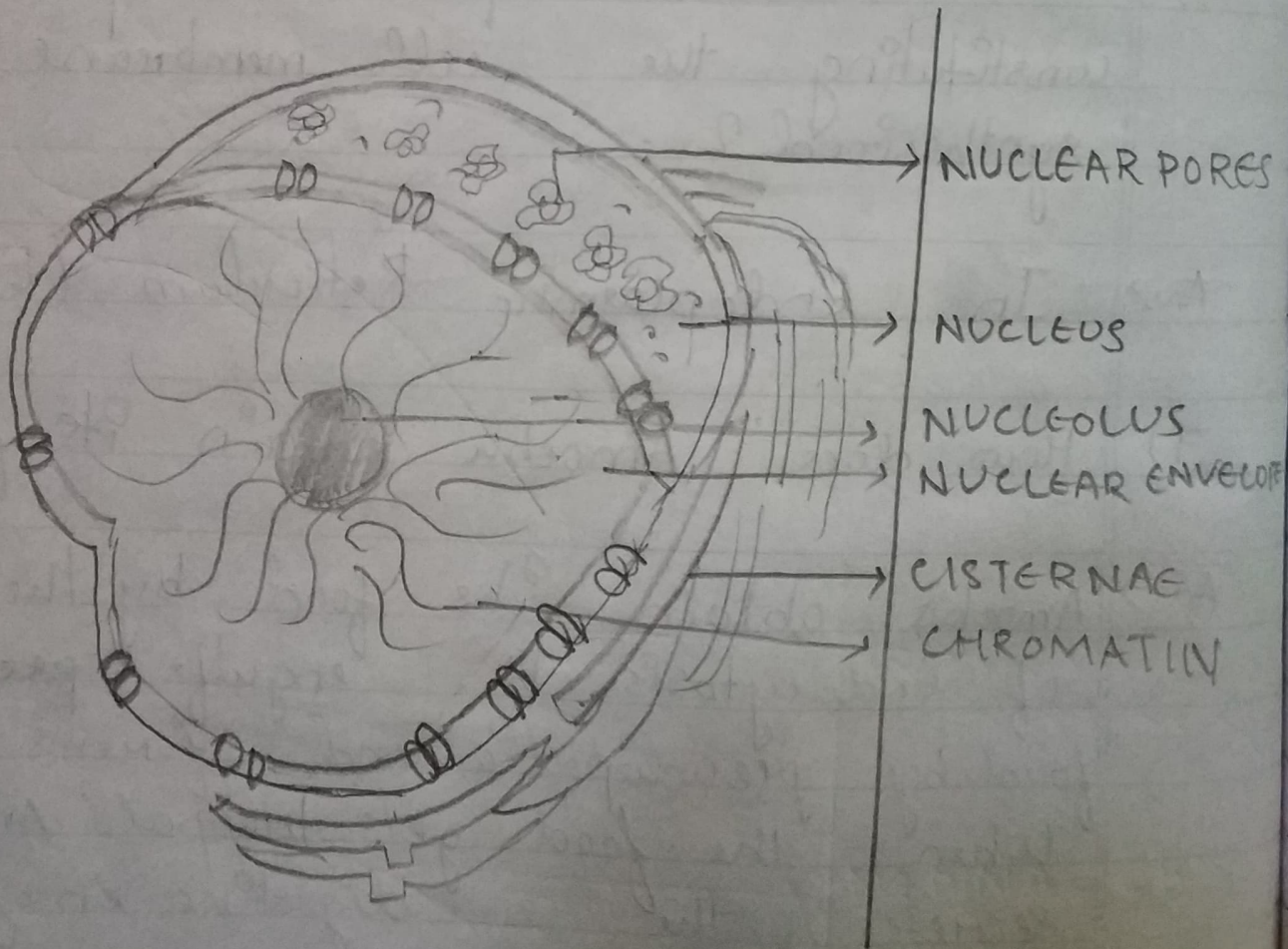
8) What is Osmosis?

Osmosis is the passage of water from

a region of higher water concentration to low by a semi permeable membrane.

### DIAGRAMS TO BE DRAWN :

1) NUCLEUS :



2)

## MITOCHONDRIA



MATRIX

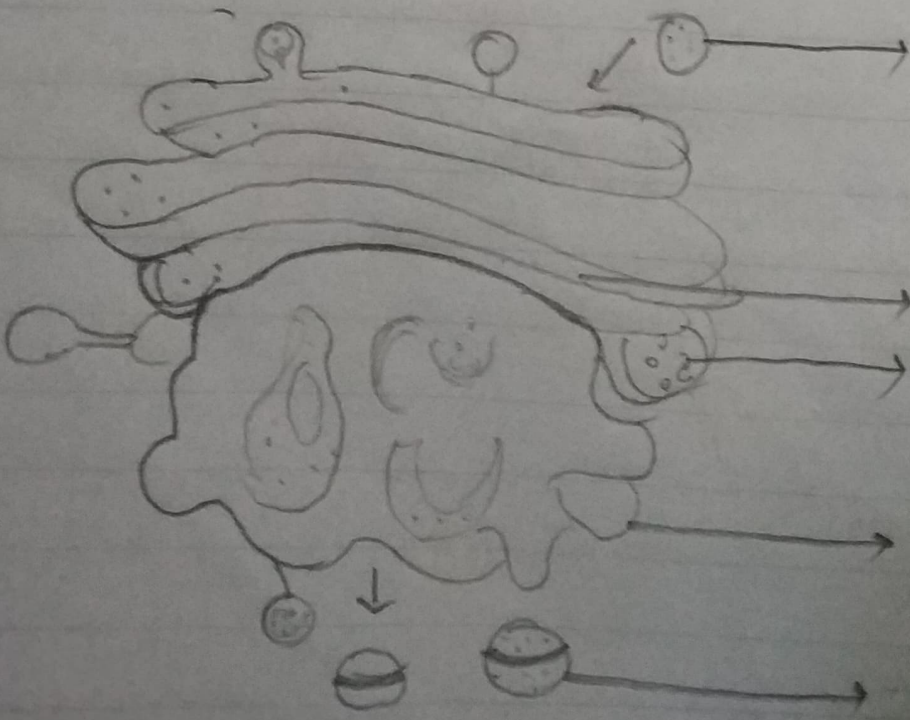
OUTER MEMBRANE

INNER MEMBRANE  
SPACE

CRISTAE

3)

## GOLGI COMPLEX



TRANSFER OF VESICLES  
FROM RER

MEDIAL CISTERNA

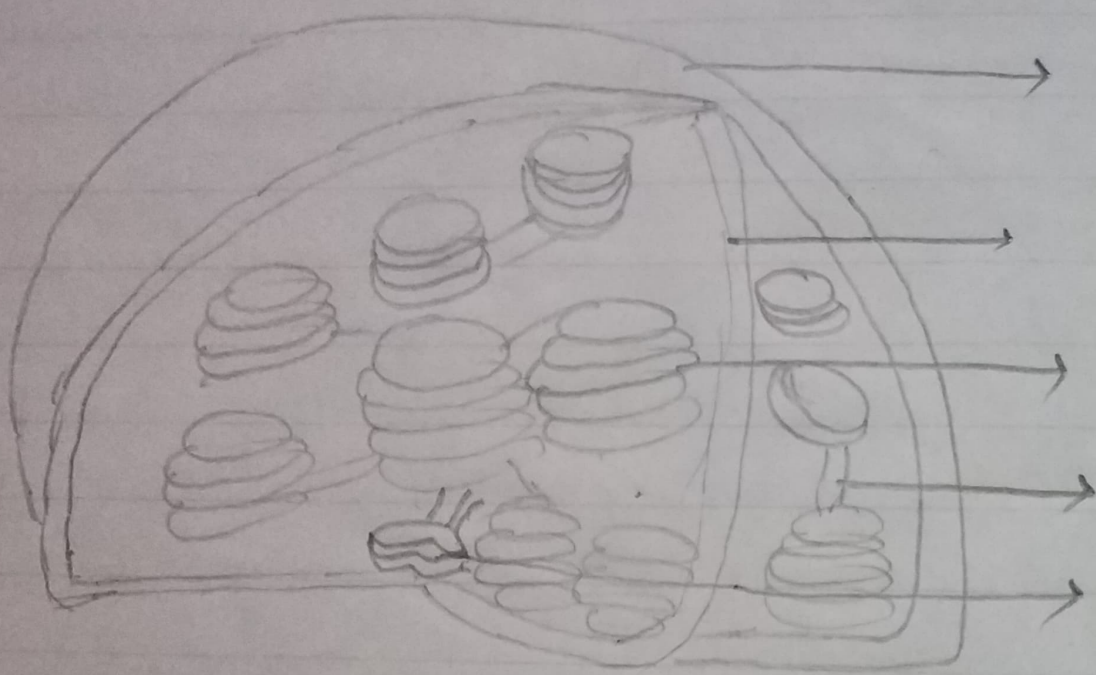
TRANSFER VESICLE

EXIT OR TRANS FACE

SECRETORY VESICLES

4)

# CHLOROPLAST



OUTER MEMBRANE

INNER MEMBRANE

GRANUM

STOMA

THYLAKOID