

Ch-2: (The flower)

- 1) Develops into a shoot.
- 2) Develops into a root.
- 3) Absorbs and allows the entry of as much water as is required for germination.
- 4) They contain stored food material which is used by the seedling for growth.
- 5) It protects the seed from insects and bacteria as well as from mechanical injury.

2) A seed which shows hypogeal germination.

Ans - The pea seeds

(b) A monocot seed.

Ans - The maize grain

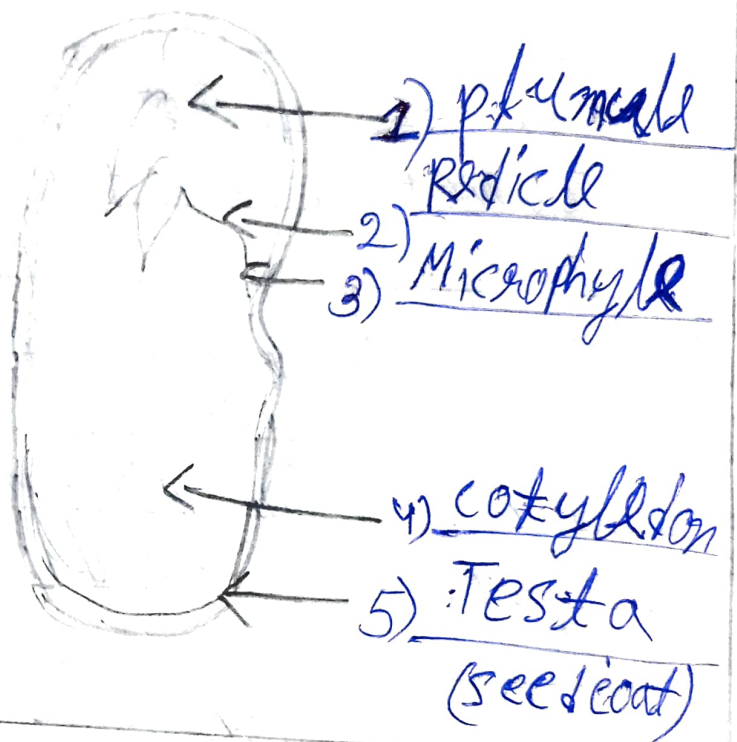
(c) A dicot seed.

Ans - The bean seeds.

(d) A seed which shows epigeal germination.

Ans - A bean seed.

bean seed



3/ (a) Radicle and plumule.

Ans - Radicle - Develops into a root.
Plumule - Develops into a shoot.

(b) Hilum and micropyle

Hilum - marks the place where the seed was attached to the fruit wall.

Micropyle - Absorbs and allows the entry of a much water as is required for germination.

(c) Testa and tegmen.

Ans - Testa - The outer ~~exposed~~ ^{seed} part of a seed coat is called testa.

Tegmen - The inner part of a seed coat is called tegmen.

4. Two functions of a fruit are:-

Ans - 1) It protects seeds and
2) fruits store food inside them

Column A

Column B

- | | |
|----------------|--|
| 5/ (a) Radicle | (i) Shoot |
| (b) Plumule | (ii) Store food material |
| (c) cotyledon | (iii) Root |
| (d) Testa | (iv) Absorb water needed for germination |
| (e) Micropyle | (v) Protection of seed |

6/ Ans - As the radicle emerges out of the seed earlier and develops into a root it helps in providing water and minerals for further growth of the plumule.

7/ (a) Some seeds have no cotyledons. (False)

(b) Warmth is necessary for the germination of seeds. (True)

(c) All seeds have two cotyledons. (False)

(d) Oxygen is necessary for the germination of seeds? (True)

8/ (a) Radicle: It develops into a root.

8) Cotyledons: - It stores the food material which is used by the seedling for growth.

(c) Endosperm: The upper, larger part of the maize grain is called the endosperm. It stores food in the form of starch.

(d) Microphyll: It absorbs and allows the entry of as much as water as is required for germination.

9) The three conditions necessary for germination of seeds are:

ans - a) Oxygen, suitable temperature and water

10) a) Roots: Radicles
b) Leaves: plumule

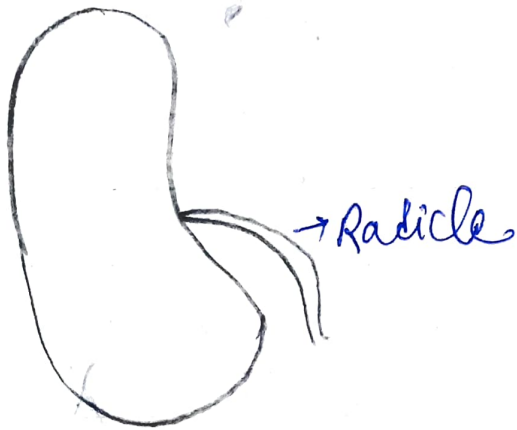
~~_____~~

11/

COMPLETE SEED



RADICLE EMERGED



PLUMULE EMERGED

