

CW  
25/11/2

# CH/14 : INTRODUCTION TO NEGATIVE NUMBER

classmate

Date \_\_\_\_\_

Page \_\_\_\_\_

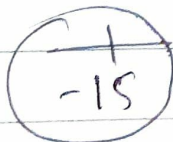
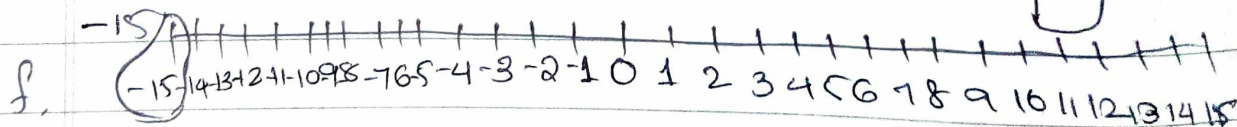
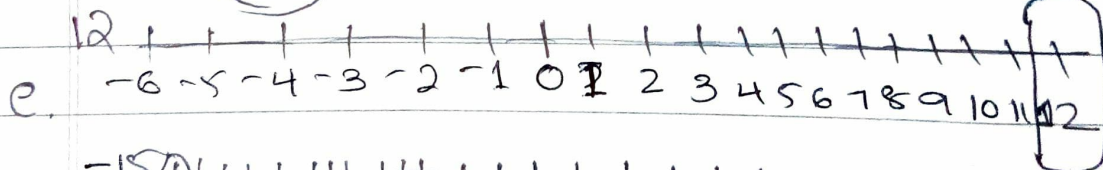
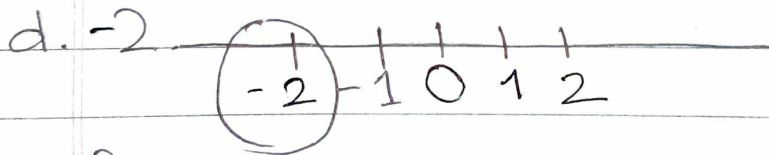
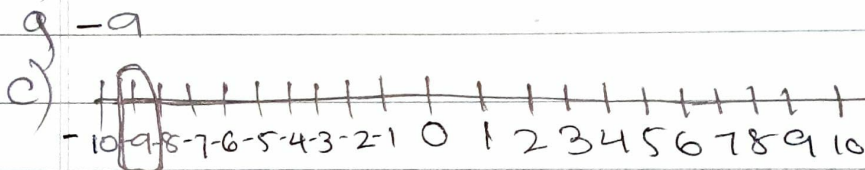
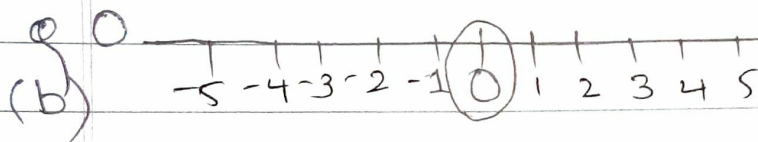
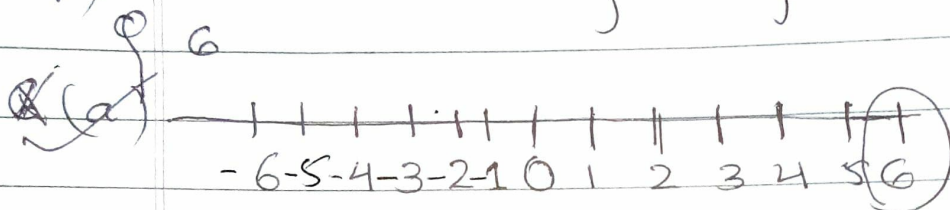
Q5) Write the negatives of the following numbers

(a) ~~-8~~ -12 = +12 (b) 6 = -6

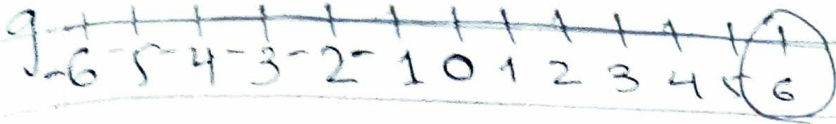
(c) 0 = 0 (d) -7 = +7 (e) -4 = +4

(f) -10 = +10 (g) 8 = -8 (h) 4 = -4

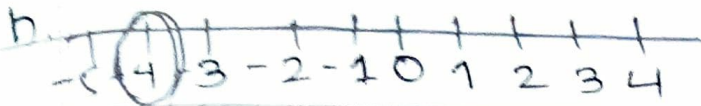
Q6) Mark the following integers on the number line



6



-4



7. How many integers are in between?

✓ a) -5 and 2 = -4, -3, -2, -1, 0, 1 = 6 integers.

✓ b) 4 and 11 = 5, 6, 7, 8, 9, 10 = 6 integers

✓ c) -3 and -10 = -4, -5, -6, -7, -8, -9 = 6 integers.

✓ d) -5 and +5 = -4, -3, -2, -1, 0, 1, 2, 3, 4 = 9 integers.

HW) e) 0 and -6 = -1, -2, -3, -4, -5 = 5 integers

f) -4 and +4 = -3, -2, -1, 0, 1, 2, 3 = 7 integers

8. Write all integers between the following

✓ a)  $-2$  and  $+7 = -1, 0, 1, 2, 3, 4, 5, 6$

✓ b)  $-4$  and  $4 = -3, -2, -1, 0, 1, 2, 3$

✓ c)  $0$  and  $-5 = -1, -2, -3, -4$

✓ d)  $2$  and  $9 = 3, 4, 5, 6, 7, 8$

HW) ✓ e)  $-1$  and  $5 = 0, 1, 2, 3, 4$

✓ f)  $0$  and  $10 = 1, 2, 3, 4, 5, 6, 7, 8, 9$

9) Indicate the following by using integers

✓ a) A loss of ₹ 90 =  $-90$

✓ b) A profit of ₹ 48 =  $+48$

✓ c) 5 km above ground level =  $+5$  km

✓ d) 2 km below water level =  $-2$  km

✓ e)  $22^\circ$  above zero =  $+22^\circ$

✓ f)  $3^\circ$  below zero =  $-3^\circ$

10. Find the opposite of the following.

a. A profit of rs. 700 = A loss of Rs. 700

b.  $-13 = +13$     c.  $21 = -21$     d. Going south - Going north

HW) e

e) A loss of ₹ 500 = A profit of ₹ 500

f

f) Decrease in population = Increase in population

g

g) Crediting money in bank = Debiting money  
in bank