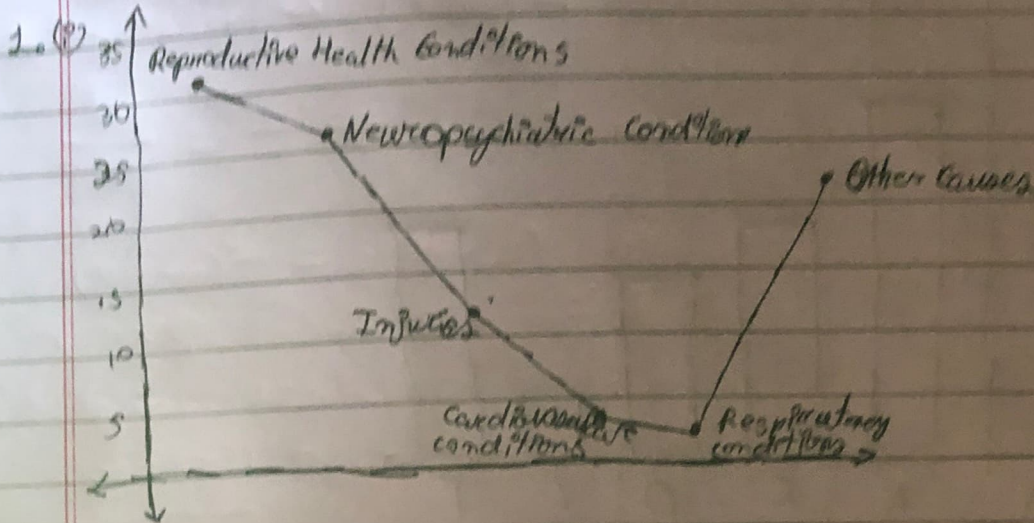
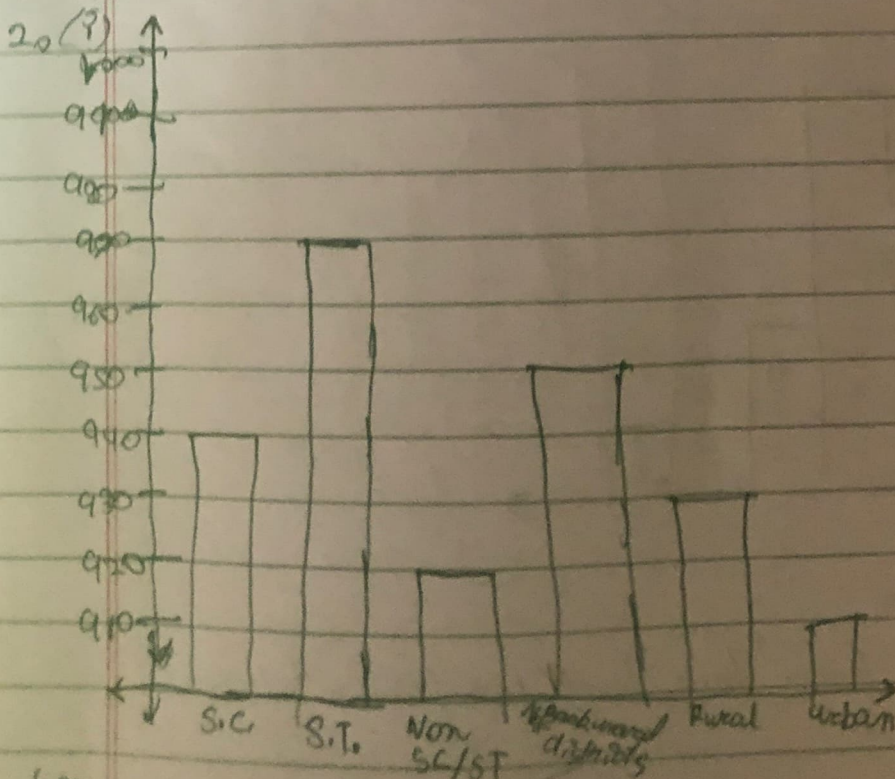


Exercise 14.3

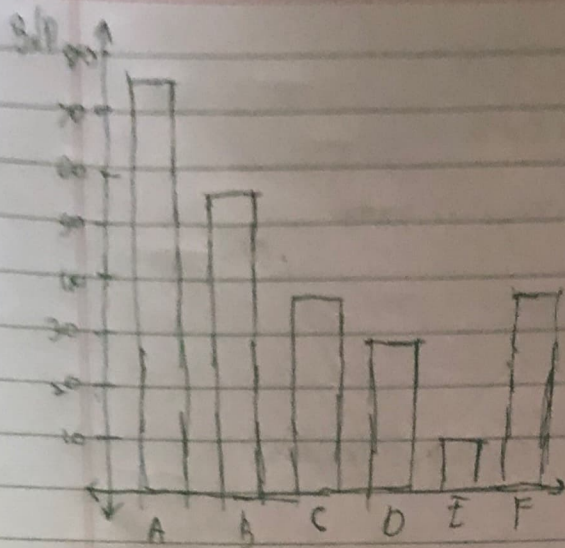


(i) Reproductive health conditions.

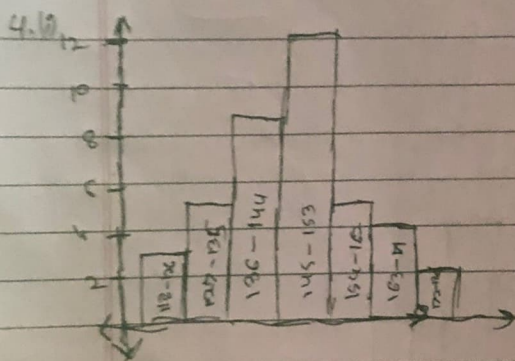
~~(ii)~~



(ii) It is concluded that

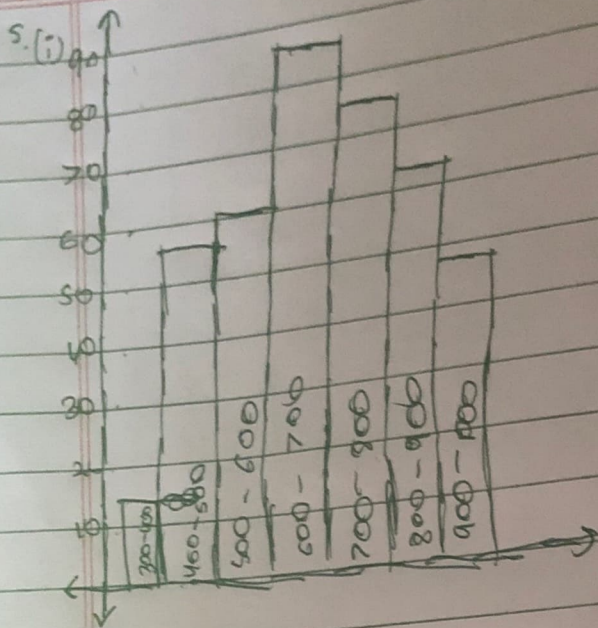


(ii) Party A has Maximum votes.

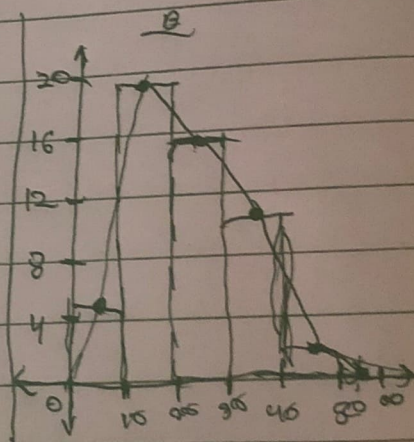
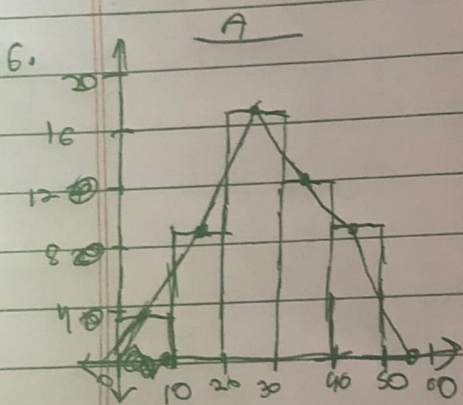


(i) Frequency Polygon

(ii) No, because 12 leaves have length from 145 cm to 153 cm.



(ii) $24 + 10 = 24 + 10 = 34$



Hint :