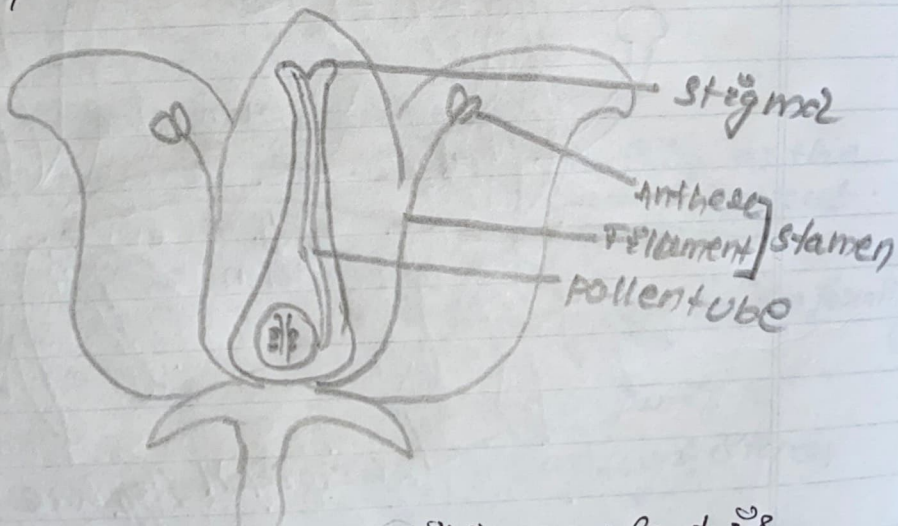


Home Assignment

1. Define the terms unisexual & bisexual giving 1 example of each.
2. Draw a longitudinal section of a flower & label the following -
 - (i) part that produces pollen grains. stamen.
 - (ii) part that transfers male gametes to the female gametes. pollen tube
 - (iii) part that is sticky to trap the pollen grains. Stigma
 - (iv) part that develops into fruit. flower



3. (i) The flowers of the hibiscus plant is
 - (a) bisexual
 - (b) unisexual
 - (c) neutral
 - (d) very small

(ii) The part of the flower which is present in the centre of the flower is:

- (a) Sepals
- (b) petals
- (c) carpels
- (d) stamens

(iii) Reproduction is essential for living organisms so as to

- (a) keep the individual organism alive.
- (b) fulfil their energy requirement.
- (c) maintain growth.
- (d) continue the species generation after generation.

(iv) The male reproductive part of flower, the stamens are collectively known as:

- (a) Androecium
- (b) filament
- (c) Anther
- (d) Gynoecium