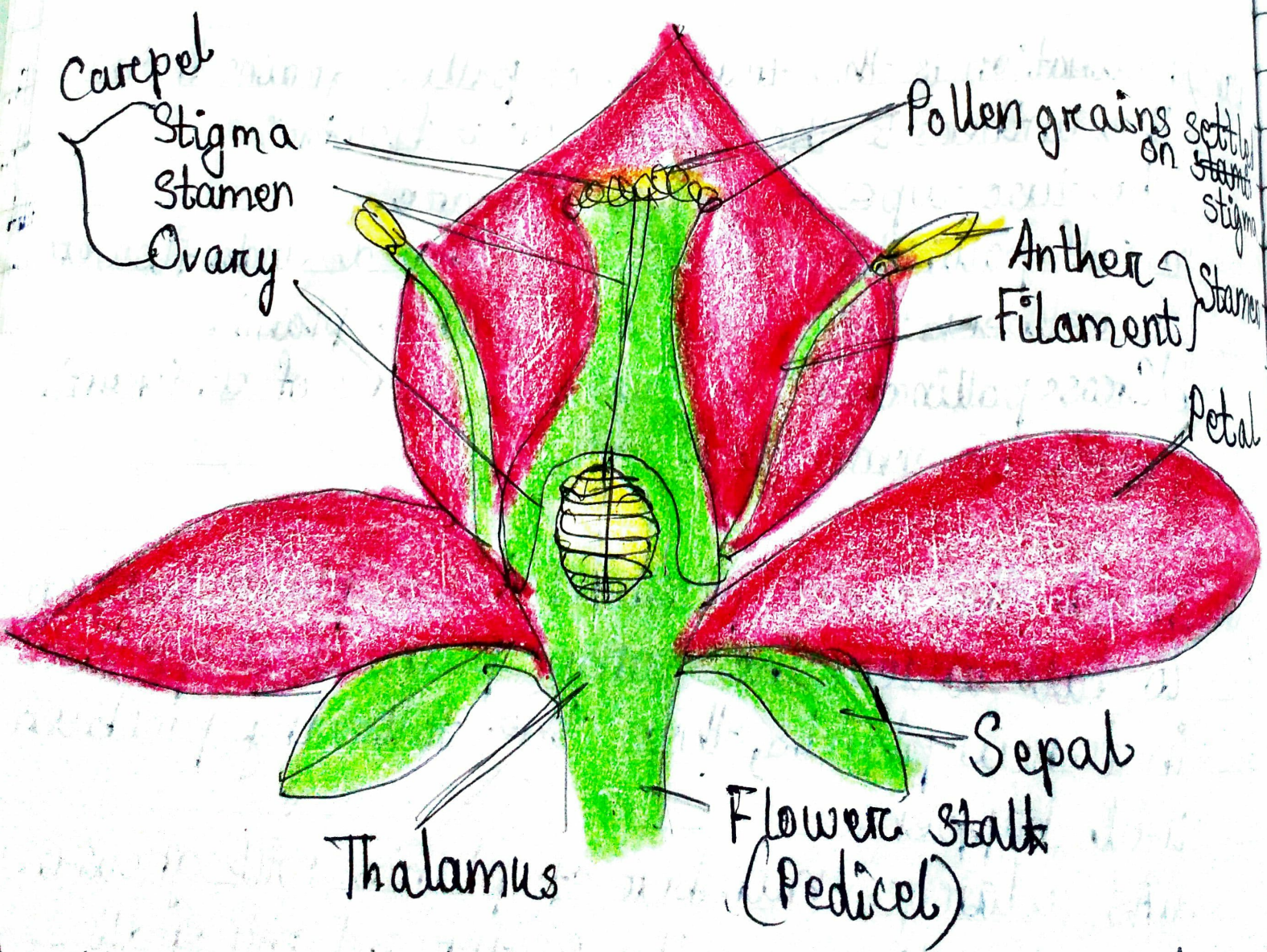


not enough. As a result most of the sprouts will die.

3) ans) A flower is the most beautiful and colourful part of a plant which serves as a reproductive organ.





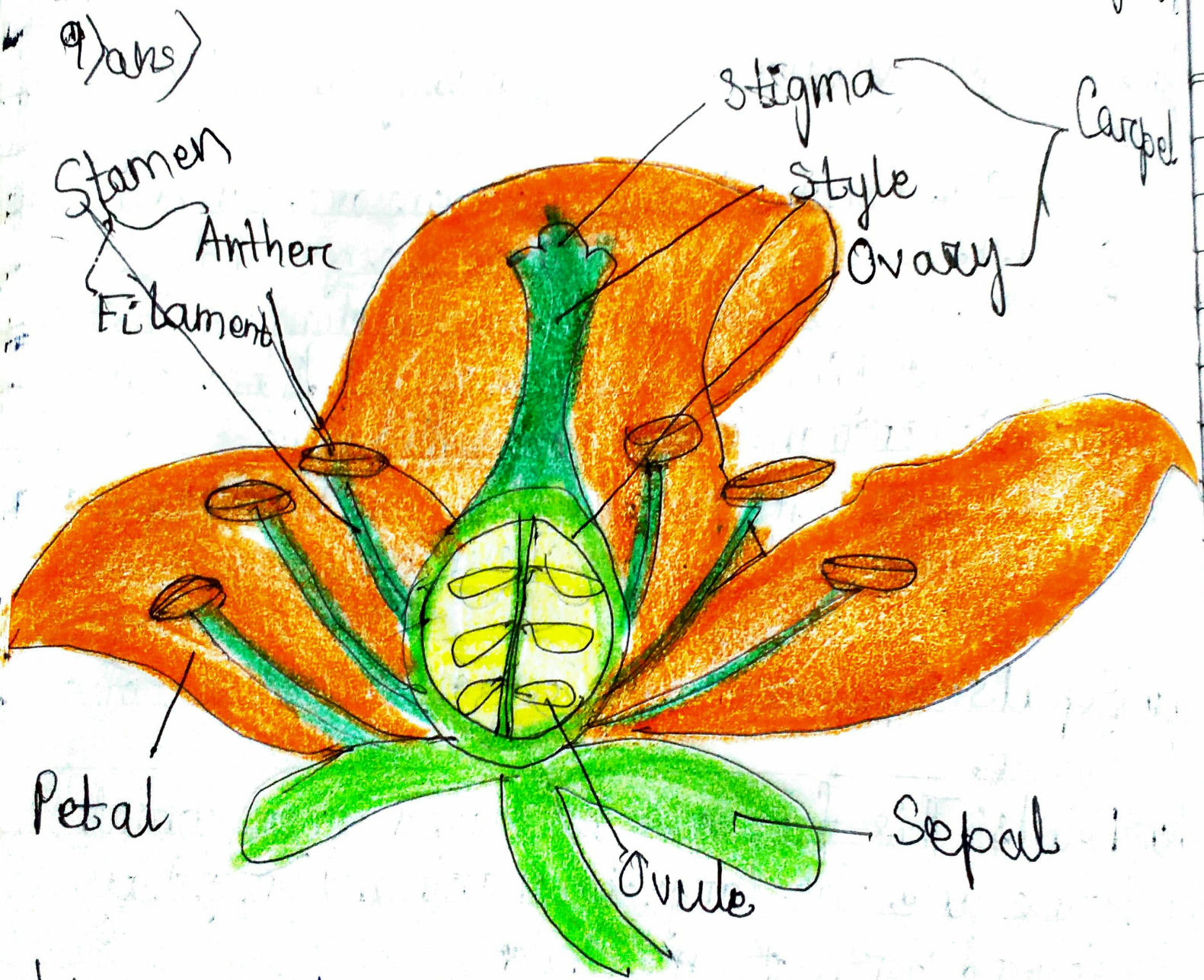
8/ans) Sepals: Sepals are the green outermost part of a flower.

9/ans) Petals: This forms the second inner whorl. Petals are the large, fragrant and brightly coloured parts of the flower.

10/ans) Anthers: It is located in the third whorl of the flower. The filament of the stamen bears the anther at its tip.

11/ans) Stigma: It is located in the fourth and the innermost whorl of the flower. The style bears the stigma at its tip.





10/a) ovary and ovule