

Exercise 6.1

Q1. i) Similar

ii) Similar

iii) Equilateral

iv) Equal, proportional.

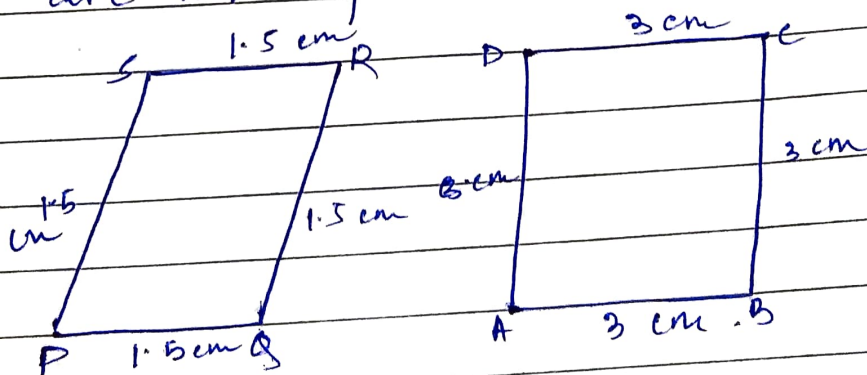
Q2 i) A pair of equilateral triangle of different side length.

A pair of two rectangle of different side length

ii) A pair of rectangle & llgram  $\neq 90^\circ$ .

A pair of isosceles triangle & scalene triangle

Q3. No, sides are proportional but corresponding angles are not equal.  $\therefore$  Not similar.



$\therefore$  They are not similar.