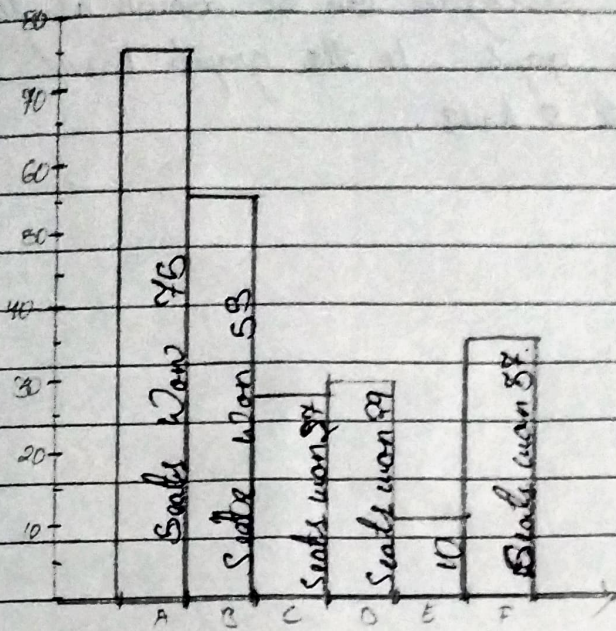


8/10/21

412

14.3

3. i)

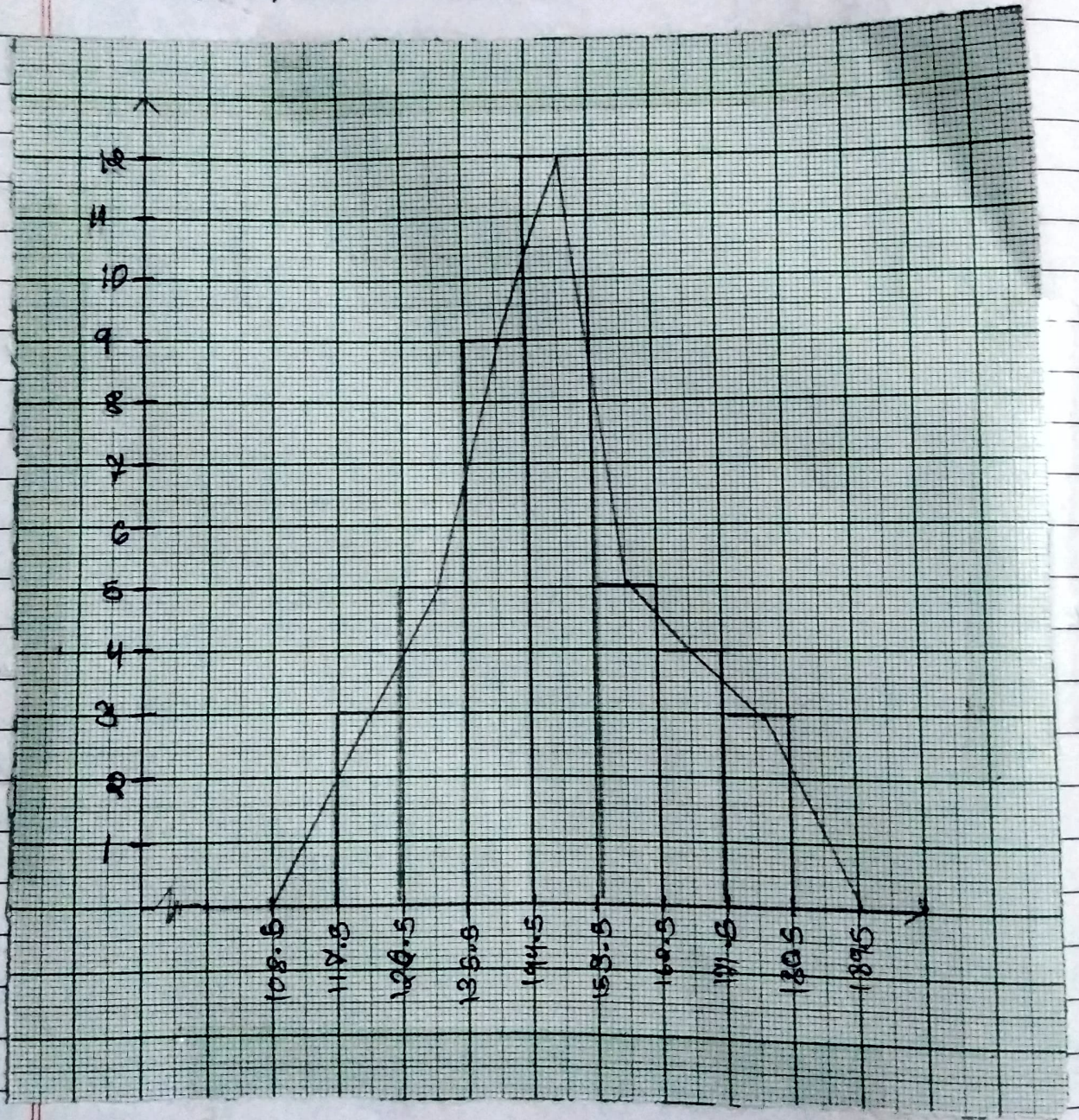


ii) Party A won the maximum no. of seats.

4. a) It can be observed that the length of houses is represented in a discontinuous class intervals having a difference of 1 in between them therefore $1/2 = 0.5$ has to be added to each upper class limit and also have to subtract 0.5 from the lower class limits so as to make the class intervals continuous.

Length in (mm)	No. of houses
117.5 - 126.5	3
126.5 - 135.5	5
135.5 - 144.5	9
144.5 - 153.5	12
153.5 - 162.5	5
162.5 - 171.5	9
171.5 - 180.5	2

Taking the length of leaves on x-axis and the no. of leaves on y-axis histogram can be drawn as shown above in the graph. In the graph width on y axis represents 2 leaves.



5. Life time

No. of Lamp

300 - 400

14

400 - 500

56

500 - 600

60

600 - 700

86

700 - 800

74

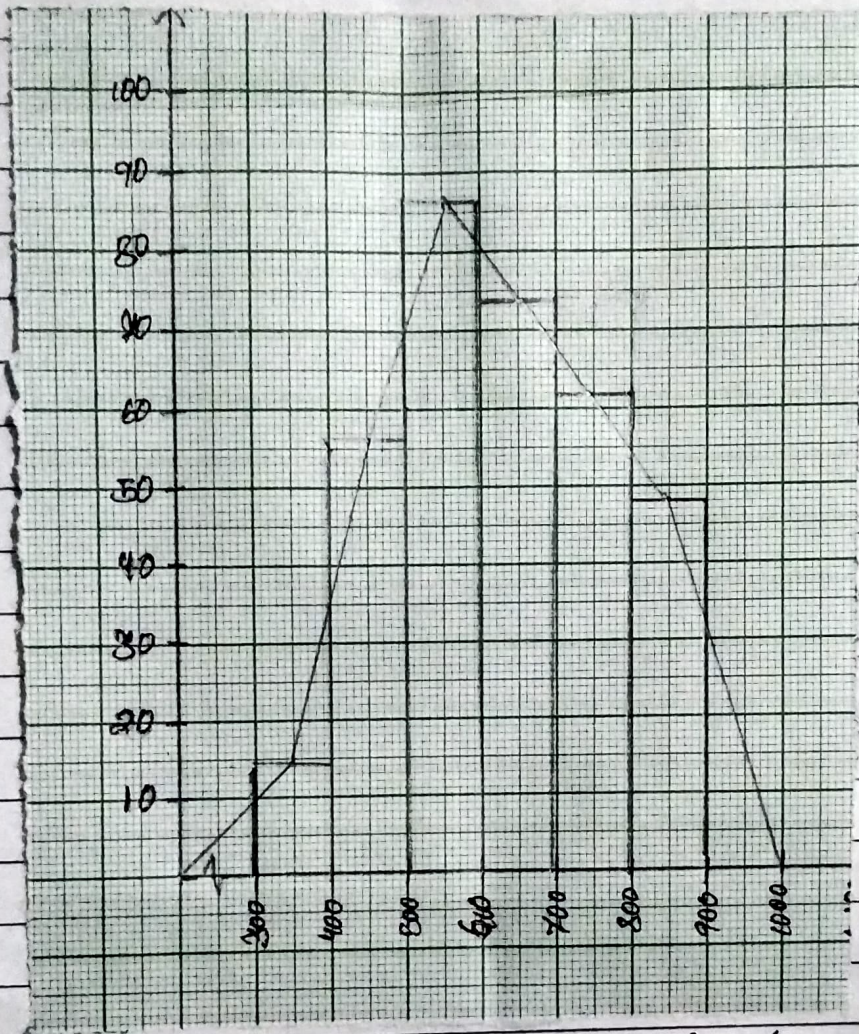
800 - 900

62

900 - 1000

48

i)



ii) There are 86 lamps have the life time of 600 hours.

6

