

HW
7/8/2021

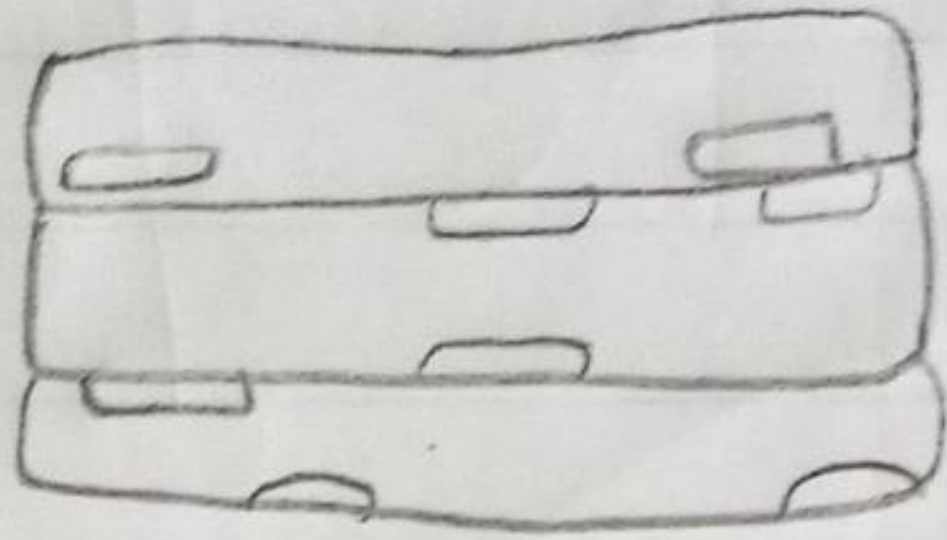
Home Assignment

1) Draw the diagram of three different types of muscles. Write two characteristics of each type. Main features

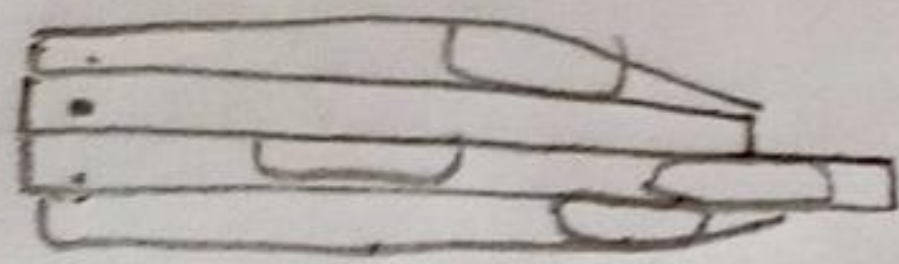
Ans) <u>Skeletal muscle</u>	→ Fibers: striated, tubular and multi-nucleated → voluntary → usually attached to skeleton.
<u>Smooth muscle</u>	→ Fibers: non-striated, spindle-shaped and uninucleated. → involuntary → usually covering wall of internal organs.
cardiac muscle	→ Fibers: striated, branched and uninucleated. → involuntary → only covering walls of the heart.

→ Types of cells :-

→ Skeletal muscle :-



→ Smooth muscle :-

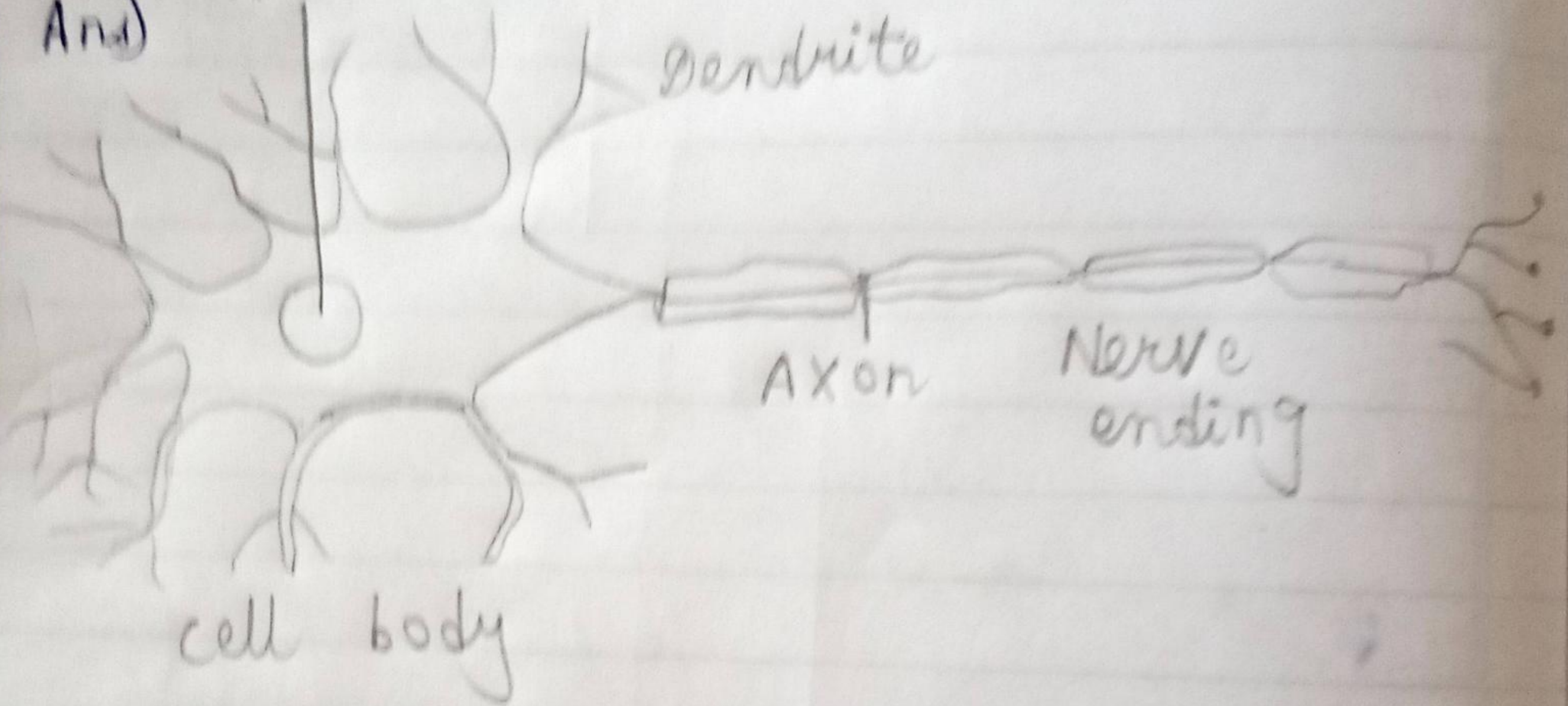


→ Cardiac muscle :-



2) Draw the diagram of nervous tissue.

And



Nervous tissue