

Ch-7

Number line

1. Fill in the blanks, using the following number line:-

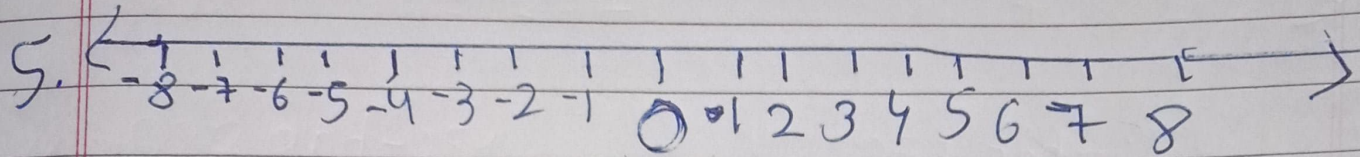
- i) An integer, on the given number line, is greater than every number on its left.
- ii) A integer on the given number line is greater than every number to its left.
- iii) 2 is greater than -4 implies 2 is to the right of -4.
- iv) -3 is less than 2 and 3 is greater than -2.
- v) 4 is greater than -8 and 4 is less than 8.
- vi) 5 is greater than 2 and -5 is less than 2.
- vii) -6 is less than 3 and the opposite of -6, is less greater than opposite of 3.
- viii) 8 is greater than -5 and -8 is less than 5.

2. i) $-15, -23$ ii) $-12, 15$ iii) $0, 8$ iv) $0, -3$
Ans = -15 Ans = 15 Ans = 8 Ans = 0

3. i) $9, -6$ ii) $2, -3$ iii) $15, -51$ iv) $13, 0$
Ans = -6 Ans = -3 Ans = -51 Ans = 0

i) $3 \geq 0$ ii) $0 > -8$ iii) $-9 < -3$ iv) $-3 < 3$

v) $5 \geq -1$ vi) $-13 < 0$ vii) $-8 > -48$

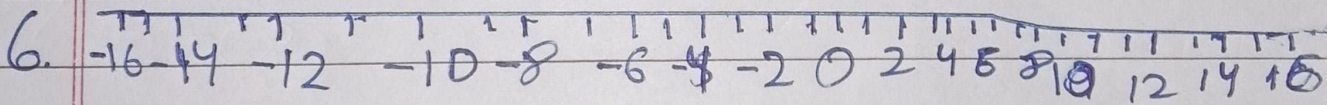


i) ~~-8, 0, 5, 5, 4, 1~~

ii) ~~3, -3, 4, -7, 0, -6, 2~~
~~-7, -6, -3, 0, 3, 3, 4~~

Ans -8, -5, -1, 0, 4, 5

4.



i) ~~-5, -3, 8, 15, 0, -2~~

ii) ~~12, 23, -11, 0, 7, 6~~

Ans ~~-5, -3, -2, 0, 8, 15~~

23, 12, 7, 6, 0, -11

Ans ~~-2, -3, -5, 15, 8, 0~~

Ans -15, 8, 0, 2, 3, 5

7) ~~the~~ F ii) T iii) T iv) T v) F vi) F