

3) Differentiate between the following
pairs of terms:-

a) Radicle and Plumule

As the radicle develops ~~in~~ into a root,

Q While the plumule develops into a shoot.

b) Hilum and micropyle.

A Hilum is the inner concave side of the seed, where the seed was attached to the fruit wall. Micropyle is a small pore which absorbs and allows water required for germination.

Q Testa and tegmen

A Testa is the outer exposed part of the seed coat, whereas tegmen is a thin membrane and lies under the testa. It is the inner part of the seed coat.

4) Give two functions of fruit.

A The two functions of fruit are:-

* It protects the seed from the unfavorable environmental conditions.

* Fruits store food inside them.

Short answer Questions :

Q) Name the part of the seed from which the following are given out:

a) Roots: Radicle give rise to roots.

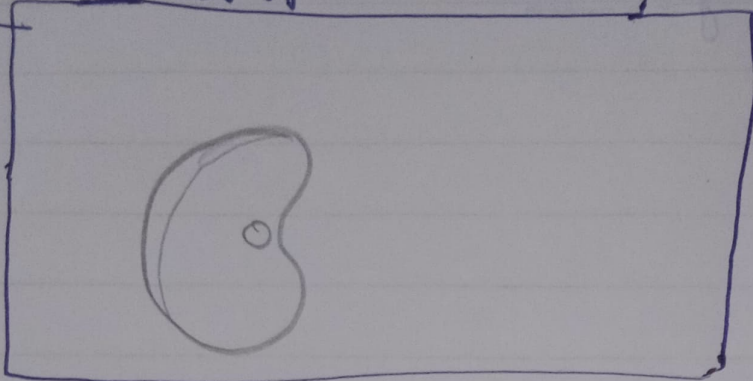
b) Leaves: Plumule gives rise to shoot bearing leaves.

Long Answer Questions

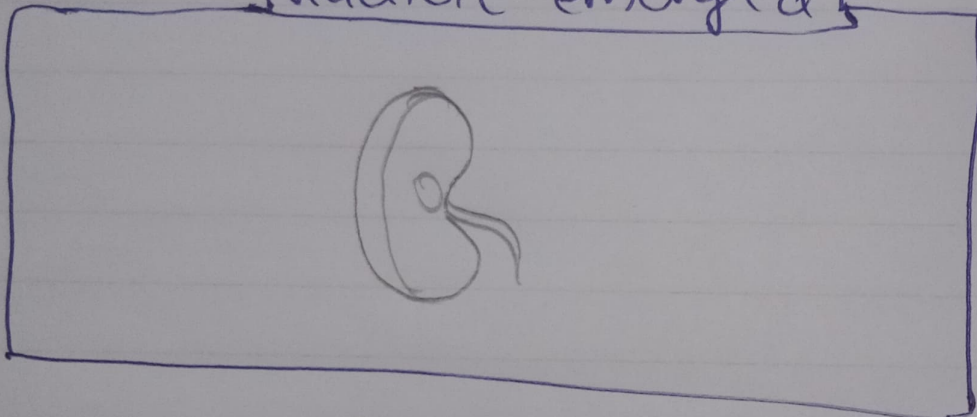
Q) Ans The hole inside the seed is called hilum. Seed coat protects the seed from harmful insects, bacteria, etc. It is made up of two parts testa and tegmen. Testa is exposed part of the seed and tegmen is the inner part of seed. Plumule is the part from which the leaves arises. Radicle is part of the seed from which the root arises. These two parts radicle and Plumules make the embryo.

11 A3

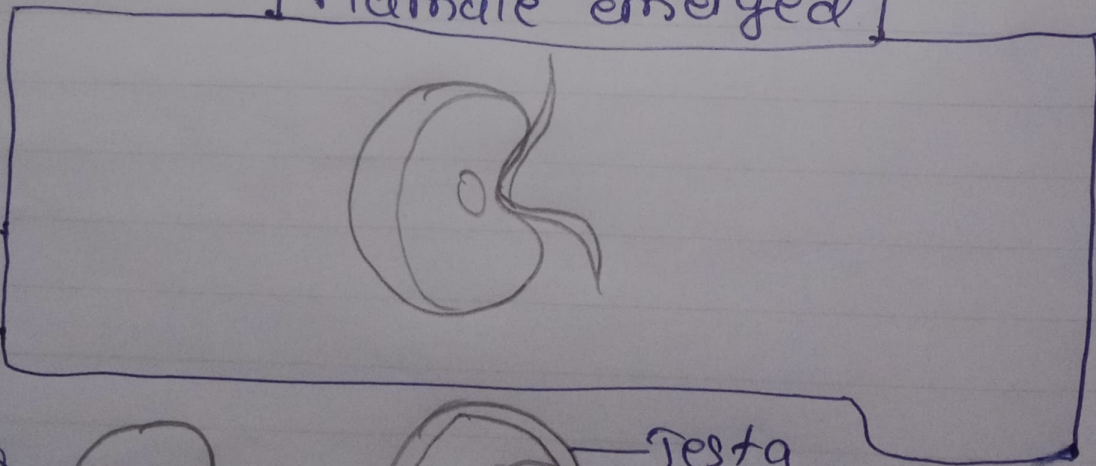
Complete seed



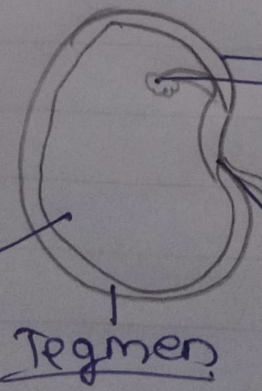
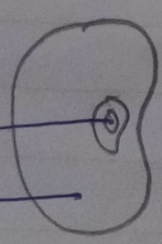
Radicule emerged



Plumule emerged



4/ A3
Helium
Testa



Testa
Plumule

Radicule
Micotroffe

Cotyledon

Tegmen