

Review Questions

Multiple Choice Questions:

1) Put a tick mark (✓) against the correct alternative in the following statements:

a) In a germinating seed, the roots develop from:

As i) Radicle

b) In a germinating seed, the shoot develops from:

As ii) Plumule

c) Which one of the following is a ~~monocotyledonous~~ monocotyledonous seed?

As iii) Maize

d) If the cotyledons are pushed above the soil, then such type of germination is called:

As iv) Epigeal

e) If the cotyledons remain under the soil, then such type of germination is called:

As v) Hypogeal

f) Pollen is produced in the:

As vi) Anther

g) Reproductive . cohorts of a flower are:
As a) Stamen and carpels

h) Which one of the following is a false fruit?

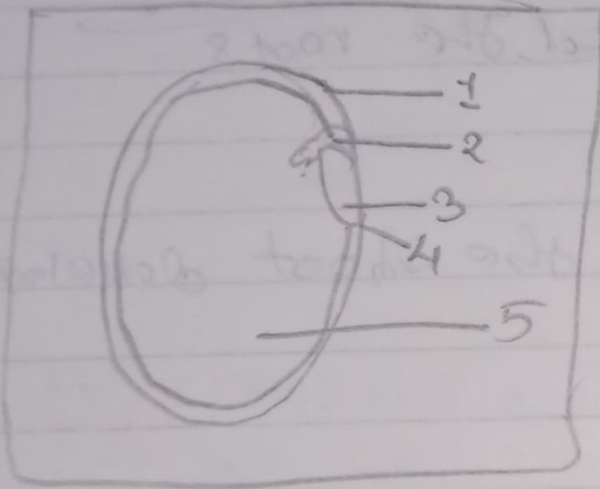
As b) Apple

i) In a seed, food is generally stored in:

As d) Cotyledons or endosperms

Short Answer Questions

1) Given below is a longitudinal section of a bean seed. Label the parts marked 1 to 5 and write their functions.



1) Testa → It is the outer exposed part of the seed.

2) Plumule → It is located between the two cotyledons and develops into ~~a root~~ a shoot.

3) Radicle → It is located between the two cotyledons and develops into a root.

4) Microphyll → It absorbs and allows the entry of as much as water as is required for germination.

5) Cotyledons → It stores the food material which is used by the seedling for growth.

2) ~~Short Answer~~ questions:- Name the following

~~Given~~

a) A seed which ~~shows~~ hypogeal germination :- Pea

b) A monocot seed :- Maize grain

c) A dicot seed :- Bean seed

d) A seed which show epigeal germination :- Bean seed