

Ce0

7/5/21

Ex-5 (A)

i) (A) $1234 \times 9 + 4 = 11110$

$$12345 \times 9 + 5 = 111110$$

$$123456 \times 9 + 6 = 1111110$$

ii) (A) $9876 \times 9 + 4 = 88888$

$$98765 \times 9 + 3 = 888888$$

$$887654 \times 9 + 2 = 8888888$$

iii) (A) $1234 \times 8 + 4 = 9876$

$$12345 \times 8 + 5 = 98765$$

$$123456 \times 8 + 6 = 987654$$

iv) (A) $444 \div 12 = 37$

$$555 \div 15 = 37$$

$$666 \div 18 = 37$$

2) (i) (A)

6	7	2
1	5	9
8	3	4

(ii)

4	9	8
11	7	3
6	5	10

(iii)

16	2	12
6	10	14
8	18	4

~~How previous knowledge test:~~

Sum for row-wise is as follows.

i) (A)

$$6 + 7 + 2 = 15$$

$$1 + 5 + 9 = 15$$

$$8 + 3 + 4 = 15$$

Sum for column wise is as follows.

$$6 + 1 + 8 = 15$$

$$7 + 5 + 3 = 15$$

$$2 + 9 + 4 = 15$$

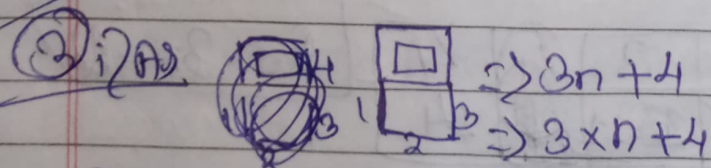
Sum for diagonal wise is as follows

$$6 + 5 + 4 = 15$$

$$2 + 5 + 8 = 15$$

Hence, the magic square is completed.

Q. 2
8/5/21 Ex-5(P)



N	1	2	3	4	5
S	7	10	13	16	19

For example: ~~2nd~~ 6th figure: $3 \times 6 + 4$

$$= 18 + 4 = 22 \text{ matchsticks}$$

~~15th figure: $3 \times 15 + 4$~~

$$= 45 + 4 = 49 \text{ matchsticks}$$