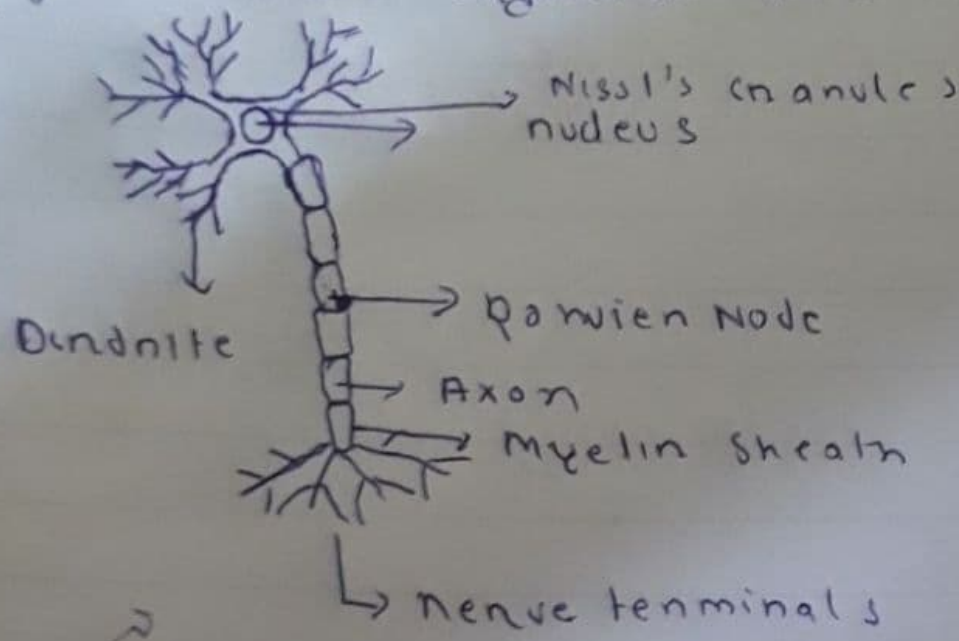


(1) Draw a well diagram of neuron.



(2) Trace the pathway of impulse conduction in your body?

The original electrical impulse travels from sinus node across the cells for your heart's right and left atria. The signal travels to the AV node. This node is located between the atria and the ventricle. In AV node the impulses are slowed down for a very short period.

(3) What do you mean by reflex action what is its significance?

Reflex action is a rapid automatic response to a stimulus which is not under the voluntary control of the brain.

- it plays vital role for survival of this animal.
- it relieves the brain from maximum stress.
- it protects the animal from harmful situation by

Immediate responses

1) Classify neurons on the basis of neurites

Nerve cells are functionally classified

as sensory neurons, motor neurons and

interneurons. Sensory neurons are unipolar,

bipolar and multipolar. Motor cells

that conduct action potentials towards

on into the central nervous system.