

(1) Define the terms unisexual and bisexual giving one of each

Unisexual - In most of the animal, including human, and female reproductive organs are in different individuals.

Such animals are called unisexual.

The flower may be unisexual (eg - papaya, watermelon)

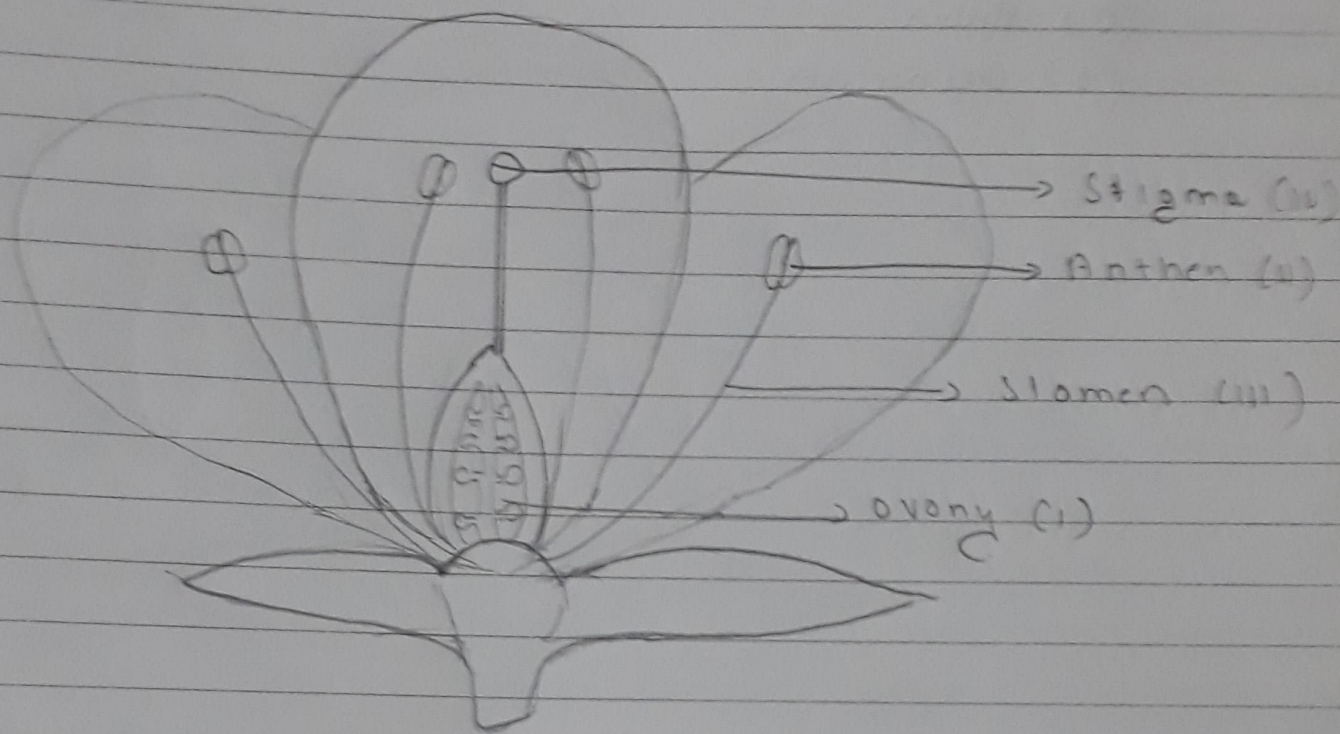
Bisexual - In some animals the male and female reproductive organs are found in single individual. Such organism are called bisexual (eg - Hibiscus, Mustard)

Draw a longitudinal section of a flower and label the following parts.

(i) Part that produce pollen grains

(ii) Part that transfer male gametes to the female gametes

- (iii) Part that is sticky to trap the pollen grains
 (iv) Part that develops into fruit.



The flower of the Hibiscus plant is

- (a) bisexual
 (b) unisexual
 (c) neuter
 (d) very small

The part of the flower, which is present in the flower is

- (a) sepal
 (b) petal
 (c) carpels
 (d) stamens

Reproduction is essential for living organisms in order to
 (d) continue the species generation after generation

The male reproductive parts of a flower inc stam

collectively known as

(a) ~~Androecium~~

(b) Filament

(c) Anther

(d) Gynoecium