

3. What is a flower? Draw a typical flower & label its parts.

ans A flower is the most beautiful part of the plant which serves as a reproductive organ.

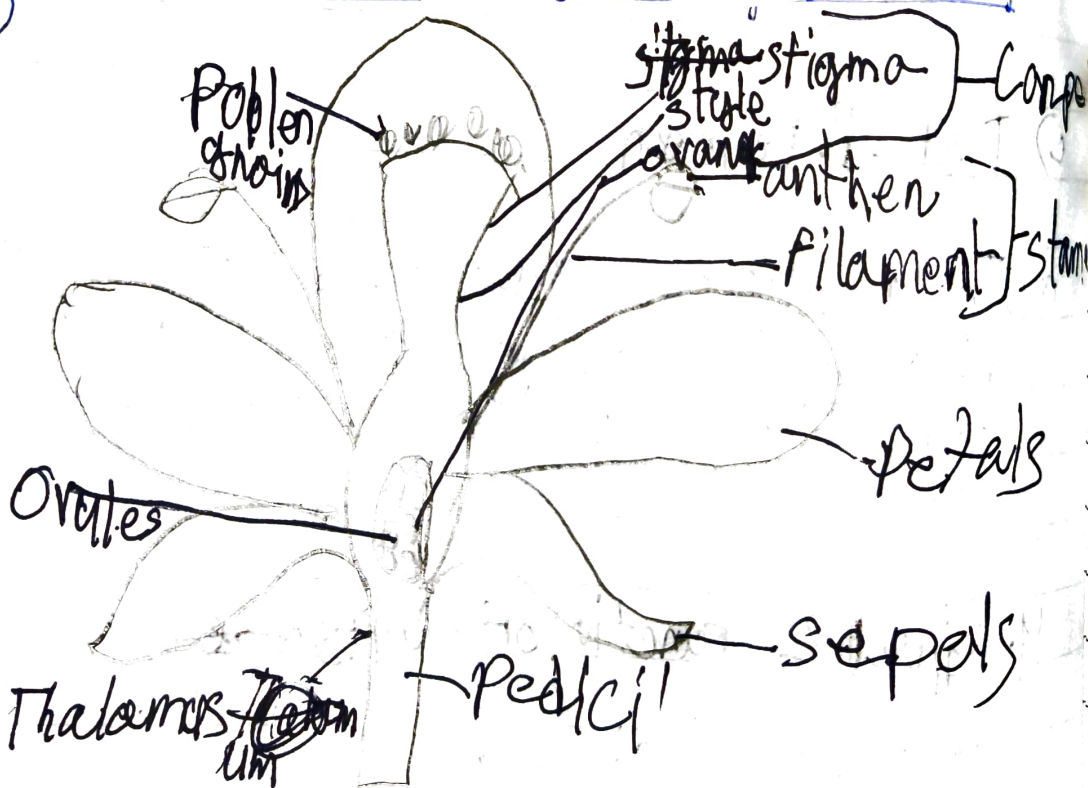
Qa Sepals are the outermost part of flower.

b Petals: This forms the second inner whorl.

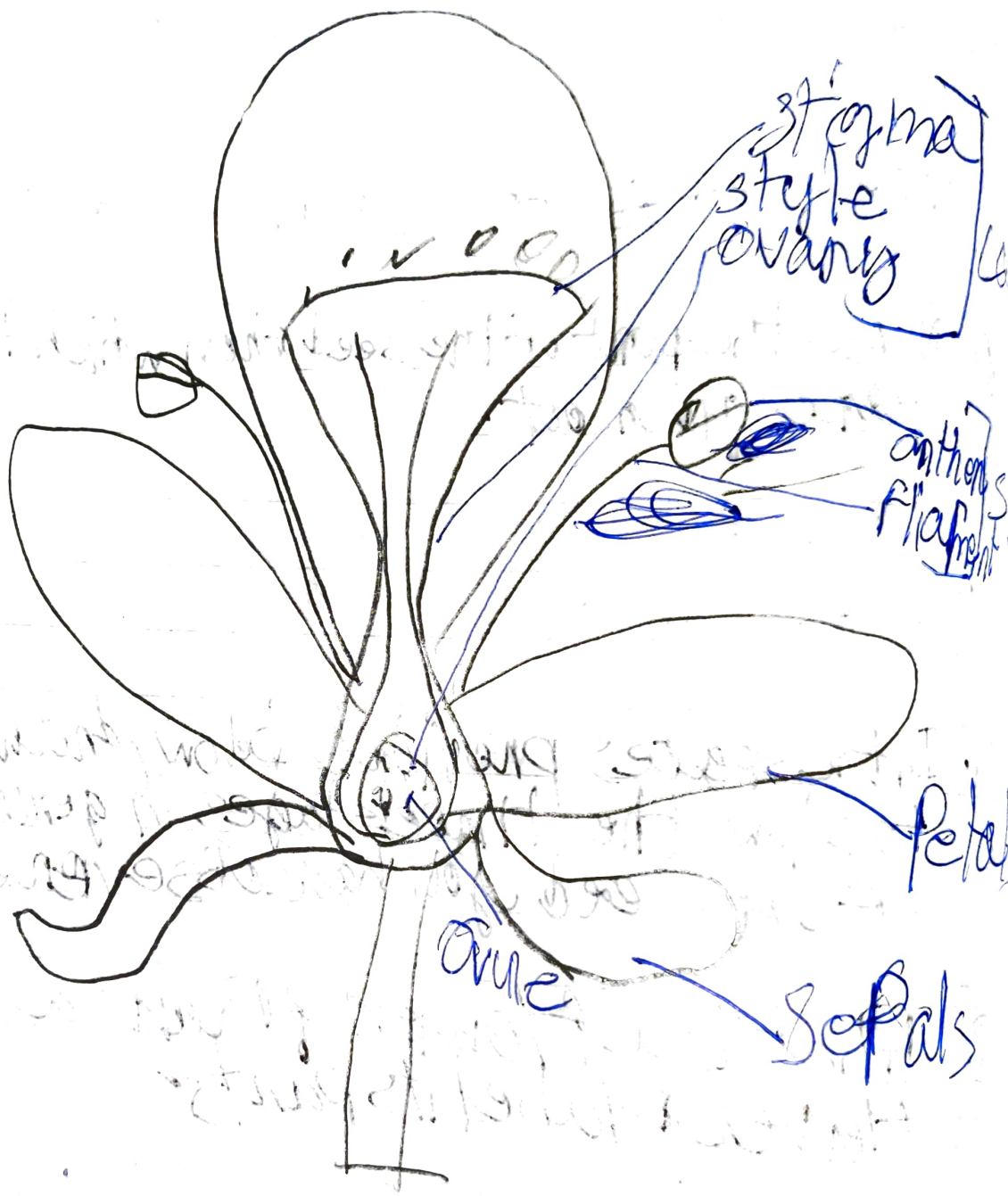
c Anther: It's located in third whorl of the flower.

d stigma: It's located in the fourth & inner most whorl.

ans 3



Q



stigma
style
ovary

anther
filament

Petal

Sepals

ovule