

Q/W
05/10/21

- | | |
|--------|---------|
| 1. (a) | 6. (b) |
| 2. (d) | 7. (d) |
| 3. (c) | 8. (b) |
| 4. (b) | 9. (d) |
| 5. (a) | 10. (d) |

Answer the following

Cartilage:-

- 1) It provides support and flexibility to body parts.
- 2) It smoothen's surface at joints.

Bone:-

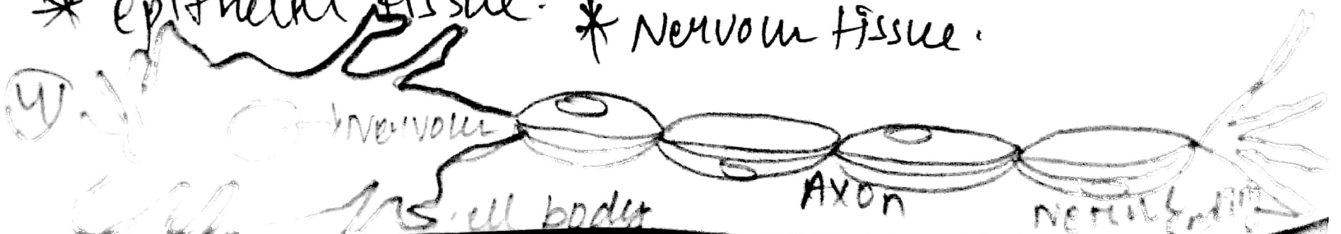
- 1) It protects the vital organs and provides strength to the muscle.
- 2) It allow us to move from one place to another.

2) Different types of tissues present in plant are:-

- * Vascular
- * Ground
- * Epidermal
- * Meristematic

3) Different types of tissues present in animal are:-

- * Connective tissue
- * Muscle tissue
- * Epithelial tissue
- * Nervous tissue





Stomata:

- 1) The small pores on the surface of leaves and stalks.
- 2) Regulate the flow of gas in and out of leaves and thus plants as a whole.