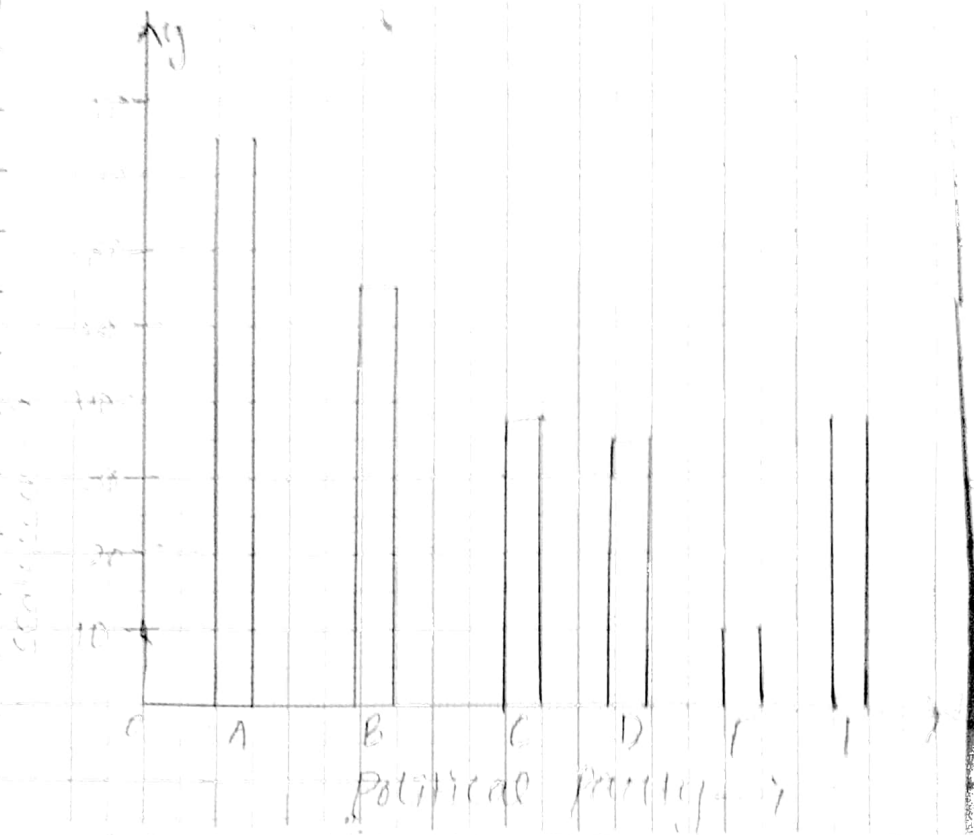


C/W
07/10/21

Assignment

14.2

(3)(i) The bar graph representing the polling results is given below:

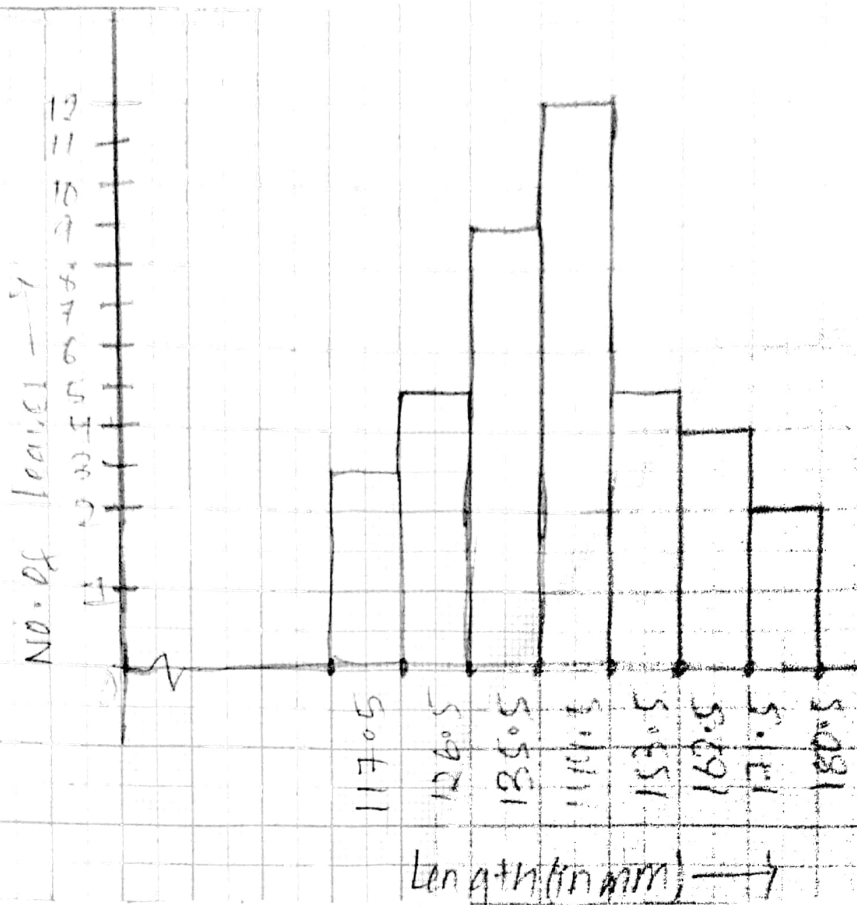


(ii) From the bar graph it's clear that Party A won the maximum no. of seats.

(4) (i) Length aren't in continuous intervals, first we make continuous intervals.

| Length in (mm) | No. of leaves |
|----------------|---------------|
| 117.5 - 126.5 | 3 |
| 127.5 - 135.5 | 5 |
| 135.5 - 144.5 | 7 |
| 144.5 - 153.5 | 12 |
| 153.5 - 162.5 | 5 |
| 162.5 - 171.5 | 4 |
| 171.5 - 180.5 | 2 |

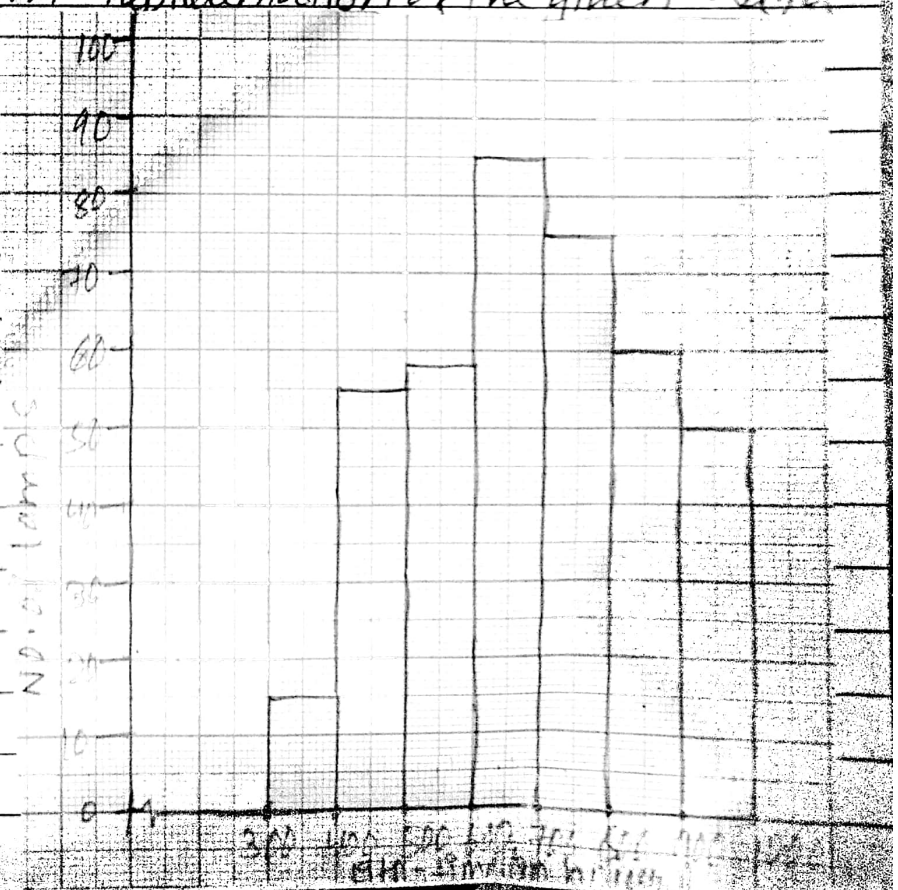
(i) Histogram representing the lengths of the leaves



- (ii) A frequency polygon is another physical representation for the same data.
- (iii) No, the given data are in the class intervals.

(b) (i) The histogram representation of the given data is given below

(ii) ∴ The no. of lamps having a life time of more than 700 hrs = $74962548 = 184$



16) The class marks = (lower limit + upper limit)
for section-A

| Mark | class-mark | Frequency |
|-------|------------|-----------|
| 0-10 | 5 | 5 |
| 10-20 | 15 | 14 |
| 20-30 | 25 | 15 |
| 30-40 | 35 | 10 |
| 40-50 | 45 | 1 |

For section-B

| Mark | class-mark | Frequency |
|-------|------------|-----------|
| 0-10 | 5 | 5 |
| 10-20 | 15 | 14 |
| 20-30 | 25 | 15 |
| 30-40 | 35 | 10 |
| 40-50 | 45 | 1 |

