

6) (i) The histogram representation of the given data is given below

(ii) The no. of lamps having a life time of more than 700 hrs =  $71 + 62 + 48 = 181$

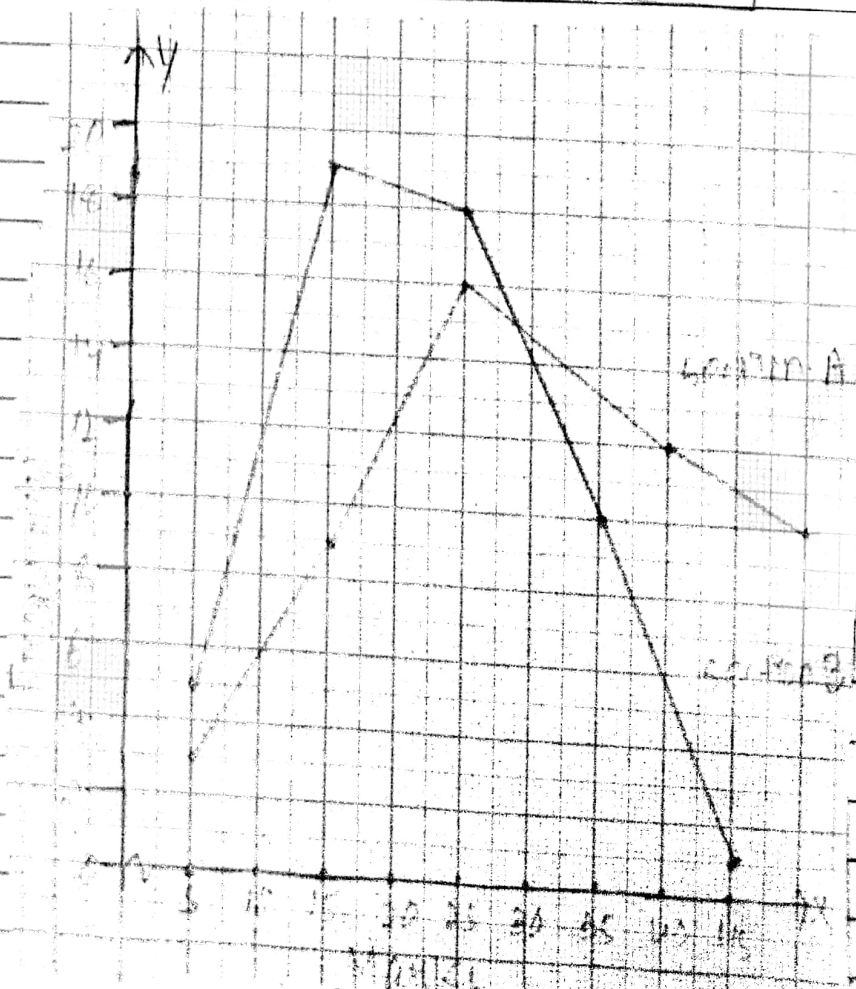


16) The class marks = (lower limit + upper limit)  
for section-A

Mark	Class-mark	Frequency
0-10	5	5
10-20	15	14
20-30	25	15
30-40	35	10
40-50	45	1

For section-B

Mark	Class-mark	Frequency
0-10	5	5
10-20	15	14
20-30	25	15
30-40	35	10
40-50	45	1

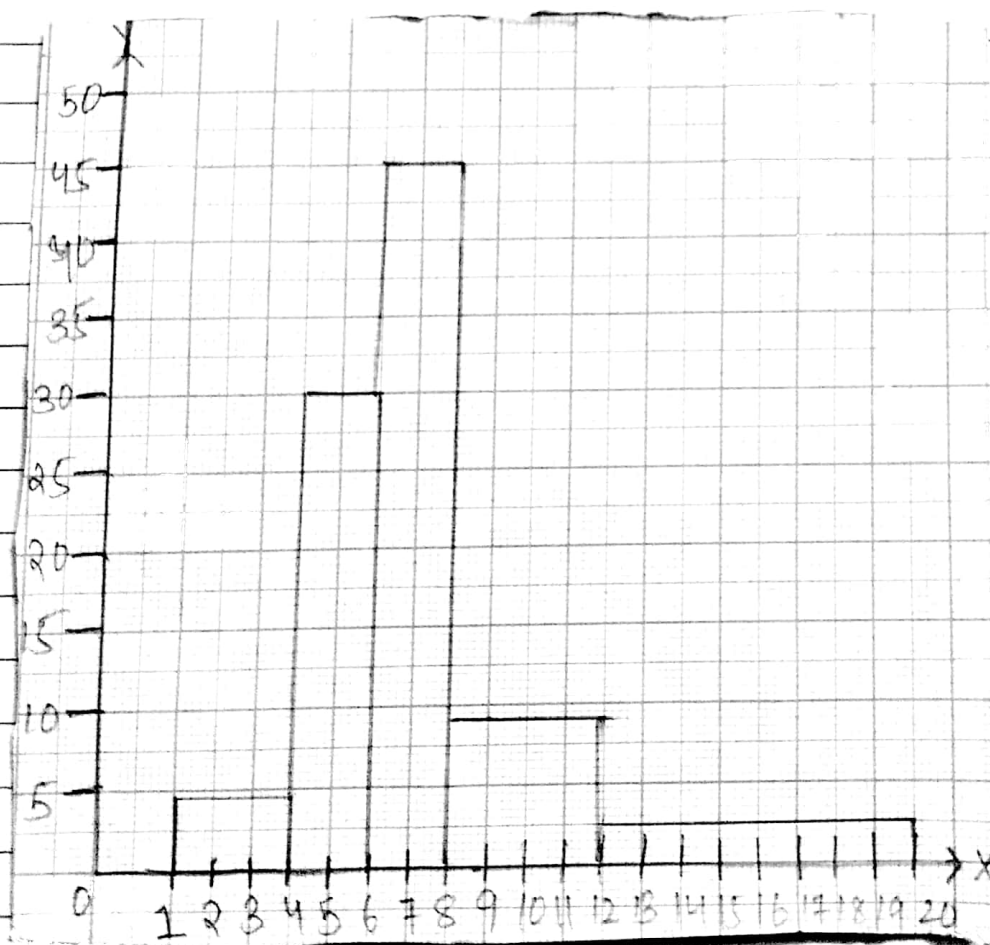


(Q) (i) The width of the class intervals in the given data is varying.  
we know that:

The area of rectangle is proportional to the frequencies in the histogram.

~~No. of letters~~ / ~~No. of surnames~~ / width of class

No. of letters	No. of surnames	width of class	length of rectangle
1-4	6	3	$(6/3) \times 2 = 4$
4-6	30	2	$(30/2) \times 2 = 30$
6-8	44	2	$(44/2) \times 2 = 44$
8-12	16	4	$(16/4) \times 2 = 8$
12-20	4	8	$(4 \times 8) \times 2 = 1$



(ii) 6-8 is the class interval in which the maximum no. of surnames lie.