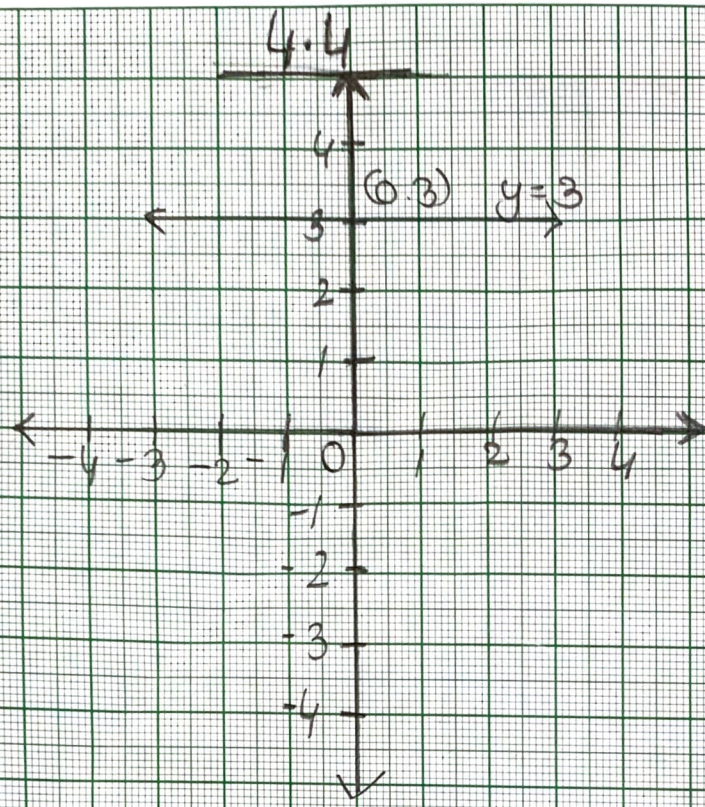
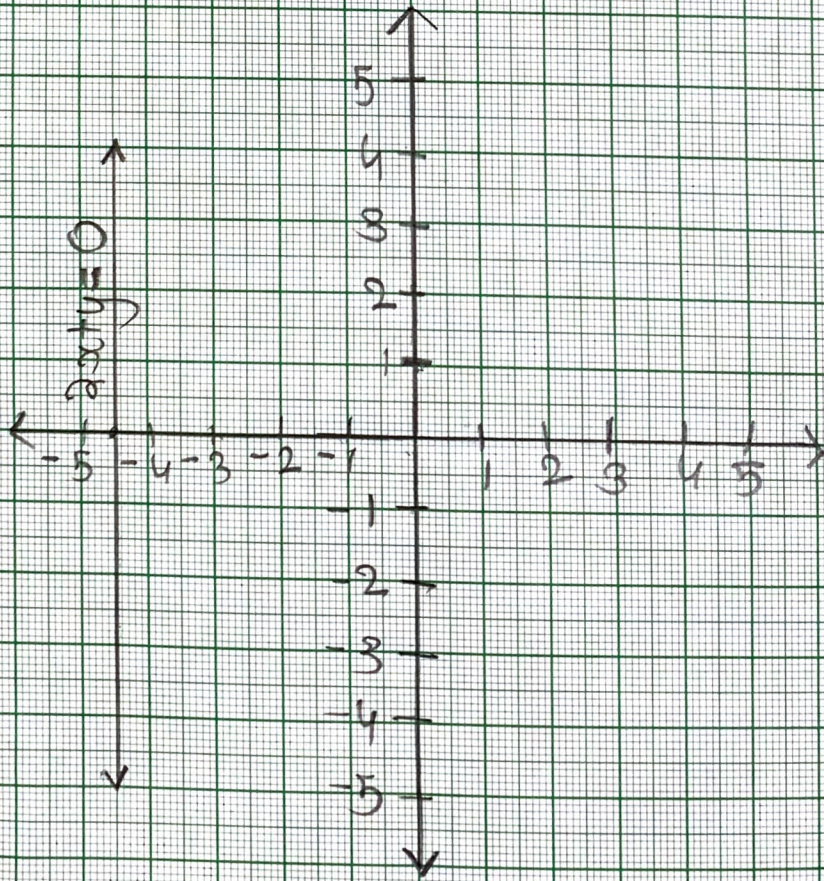


1.)



2.)

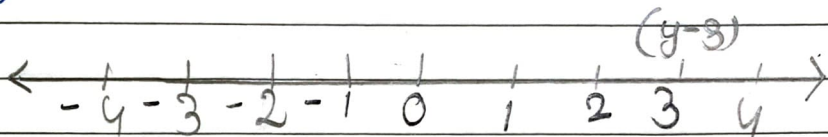


Ch-4

Exercise

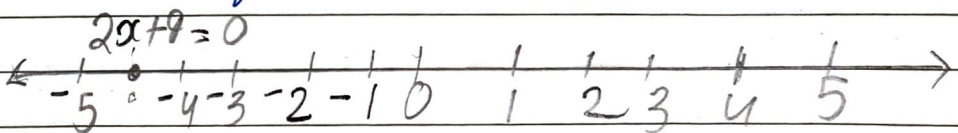
Q.4

- 1.) (i) in one variable $y=3$ represents a point as shown in following fig.



In two variable, $y=3$ represents a straight line passing through point $(0,3)$ parallel to x -axis. It is a collection of all points of the plane, having their y -coordinate as 3.

- 2.) (1) In one variable $2x+9=0$ represent a point following fig.



(2) In two variable $2x+9=0$ represents a straight line passing through point $(-4.5, 5)$

(2) In two variables.

1.) in one variable.

2.) and parallel to y -axis. It is a collection of all point of the plane, having their x -coordinate as a .